

# iNOS Polyclonal Antibody

Product Details	
Size	500 µL
Species Reactivity	Human, Mouse, Rat
Host/Isotope	Rabbit / IgG
Class	Polyclonal
Type	Antibody
Conjugate	Unconjugated
Immunogen	A synthetic peptide derived from the C-terminus of iNOS from activated mouse macrophages
Form	Liquid
Concentration	1 mg/mL
Purification	Protein A
Storage buffer	PBS, pH 7.4, with 0.2% BSA
Contains	0.09% sodium azide
Storage Conditions	4° C
RRID	AB_10980685

Applications	Tested	Dilution	Published
Immunocytochemistry (ICC)	✓	2 µg/mL	
Immunofluorescence (IF)	✓	2 µg/mL	
Immunohistochemistry (IHC)	✓	Assay Dependent	
Western Blot (WB)	✓	1-3 µg/mL	

## Product Specific Information

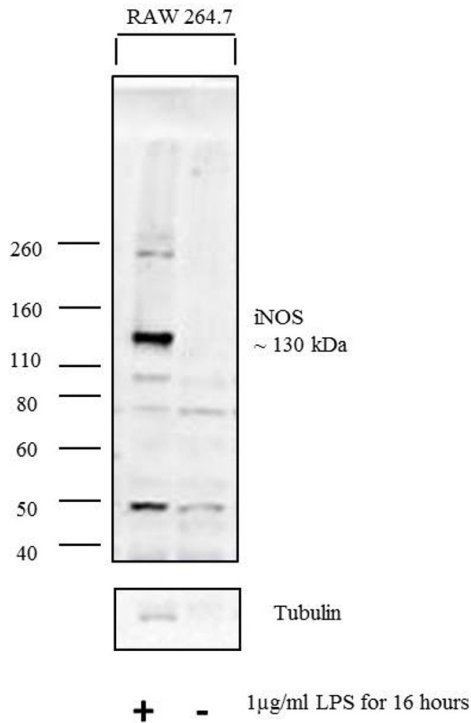
PA5-16524 targets iNOS in IHC applications and shows reactivity with Human, mouse, and Rat samples.

The PA5-16524 immunogen is a synthetic peptide derived from the C-terminus of iNOS from activated mouse macrophages.

## Advanced Verification Data

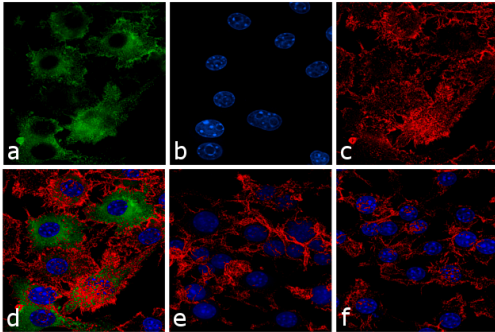
### iNOS Antibody (PA5-16524)

Altered expression of proteins upon cell treatment demonstrates antibody specificity. Western blot using iNOS Rabbit Polyclonal Antibody (product # PA5-16524), shows induction of iNOS expression in Raw cells upon treatment with LPS. Cell Treatment validation info.



### iNOS Antibody (PA5-16524)

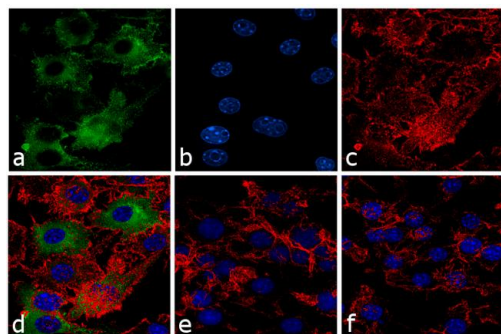
Altered expression of proteins upon cell treatment demonstrates antibody specificity. Immunofluorescence analysis of iNOS using iNOS Rabbit Polyclonal Antibody (product # PA5-16524), shows induction of iNOS expression in the cytoplasm of Raw cells upon treatment with LPS. Cell Treatment validation info.



## Product Images For iNOS Polyclonal Antibody

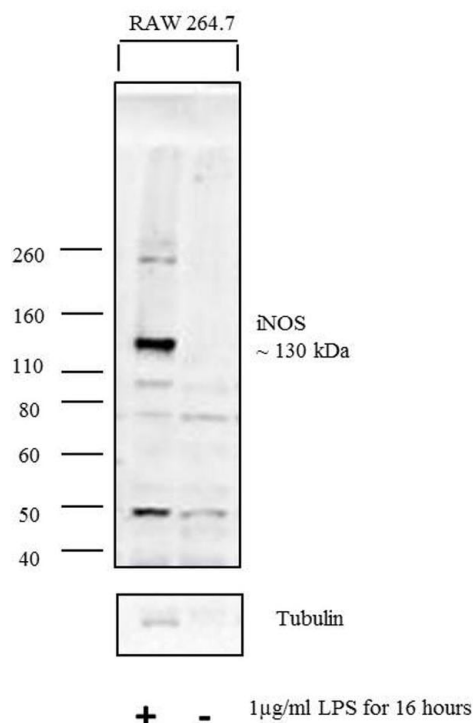
### iNOS Antibody (PA5-16524) in IF

Immunofluorescence analysis of iNOS was performed using 70% confluent log phase Raw 264.7 cells treated with 100 ng/mL of LPS for 24 hours. The cells were fixed with 4% paraformaldehyde for 10 minutes, permeabilized with 0.1% Triton™ X-100 for 10 minutes, and blocked with 1% BSA for 1 hour at room temperature. The cells were labeled with iNOS Rabbit Polyclonal Antibody (Product # PA5-16524) at 2 µg/mL in 0.1% BSA and incubated for 3 hours at room temperature and then labeled with Goat anti-Rabbit IgG (H+L) Superclonal™ Secondary Antibody, Alexa Fluor® 488 conjugate (Product # A27034) at a dilution of 1:2000 for 45 minutes at room temperature (Panel a: green). Nuclei (Panel b: blue) were stained with SlowFade® Gold Antifade Mountant with DAPI (Product # S36938). F-actin (Panel c: red) was stained with Alexa Fluor® 555 Rhodamine Phalloidin (Product # R415, 1:300). Panel d represents the merged image showing cytoplasmic localization. Panel e shows the untreated cells. Panel f represents the no primary antibody control. The images were captured at 60X magnification.



### iNOS Antibody (PA5-16524) in WB

Western blot analysis was performed on whole cell extracts (30 µg lysate) of RAW 264.7 treated with LPS (1 µg/mL for 16 hours) (Lane 1) and RAW 264.7 (Lane 2). The blots were probed with Anti-iNOS Rabbit Polyclonal Antibody (Product # PA5-16524, 2 µg/mL) and detected by chemiluminescence using Goat anti-Rabbit IgG (H+L) Superclonal Secondary Antibody, HRP conjugate (Product # A27036, 0.4 µg/mL, 1:2500 dilution). A 130 kDa band corresponding to iNOS was enhanced upon treatment in cell line. Known quantity of protein samples were electrophoresed using Novex® NuPAGE® 4-12 % Bis-Tris gel (Product # NP0321BOX), XCell SureLock Electrophoresis System (Product # EI0002) and Novex® Sharp Pre-Stained Protein Standard (Product # LC5800). Resolved proteins were then transferred onto a nitrocellulose membrane by overnight transfer method. The membrane was probed with the relevant primary and secondary Antibody following blocking with 5 % skimmed milk. Chemiluminescent detection was performed using Pierce™ ECL Western Blotting Substrate (Product # 32106).



[View more figures on thermofisher.com](http://thermofisher.com)

For Research Use Only. Not for use in diagnostic procedures. Not for resale without express authorization. Products are warranted to operate or perform substantially in conformance with published Product specifications in effect at the time of sale, as set forth in the Production documentation, specifications and/or accompanying package inserts ("Documentation"). No claim of suitability for use in applications regulated by FDA is made. The warranty provided herein is valid only when used by properly trained individuals. Unless otherwise stated in the Documentation, this warranty is limited to one year from date of shipment when the Product is subjected to normal, proper and intended usage. This warranty does not extend to anyone other than the Buyer. Any model or sample furnished to Buyer is merely illustrative of the general type and quality of goods and does not represent that any Product will conform to such model or sample. NO OTHER WARRANTIES, EXPRESS OR IMPLIED, ARE GRANTED INCLUDING WITHOUT LIMITATION, IMPLIED WARRANTIES OF MERCHANTABILITY, FITNESS FOR ANY PARTICULAR PURPOSE, OR NON INFRINGEMENT. BUYER'S EXCLUSIVE REMEDY FOR NON-CONFORMING PRODUCTS DURING THE WARRANTY PERIOD IS LIMITED TO REPAIR, REPLACEMENT OF OR REFUND FOR THE NON-CONFORMING PRODUCT(S) AT SELLER'S SOLE OPTION. THERE IS NO OBLIGATION TO REPAIR, REPLACE OR REFUND FOR PRODUCTS AS THE RESULT OF (I) ACCIDENT, DISASTER OR EVENT OF FORCE MAJEURE, (II) MISUSE, FAULT OR NEGLIGENCE OF OR BY BUYER, (III) USE OF THE PRODUCTS IN A MANNER FOR WHICH THEY WERE NOT DESIGNED, OR (IV) IMPROPER STORAGE AND HANDLING OF THE PRODUCTS. Unless otherwise expressly stated on the Product or in the documentation accompanying the Product, the Product is intended for research only and is not to be used for any other purpose, including without limitation, unauthorized commercial uses, in vitro diagnostic uses, ex vivo or in vivo therapeutic uses, or any type of consumption by or application to human or animals.