

# PDGFRA Polyclonal Antibody

| Product Details    |   |
|--------------------|---|
| Size               | 500 µL  |
| Species Reactivity | Human, Mouse, Rat   |
| Host/Isotope       | Rabbit / IgG  |
| Class              | Polyclonal  |
| Type               | Antibody  |
| Conjugate          | Unconjugated  |
| Immunogen          | A synthetic peptide derived from the C-terminus of the precursor form of human PDGFR, alpha |
| Form               | Liquid  |
| Concentration      | 1 mg/mL   |
| Purification       | Protein A   |
| Storage buffer     | PBS, pH 7.4, with 0.2% BSA  |
| Contains           | 0.09% sodium azide  |
| Storage Conditions | 4° C  |
| RRID               | AB_10981626   |

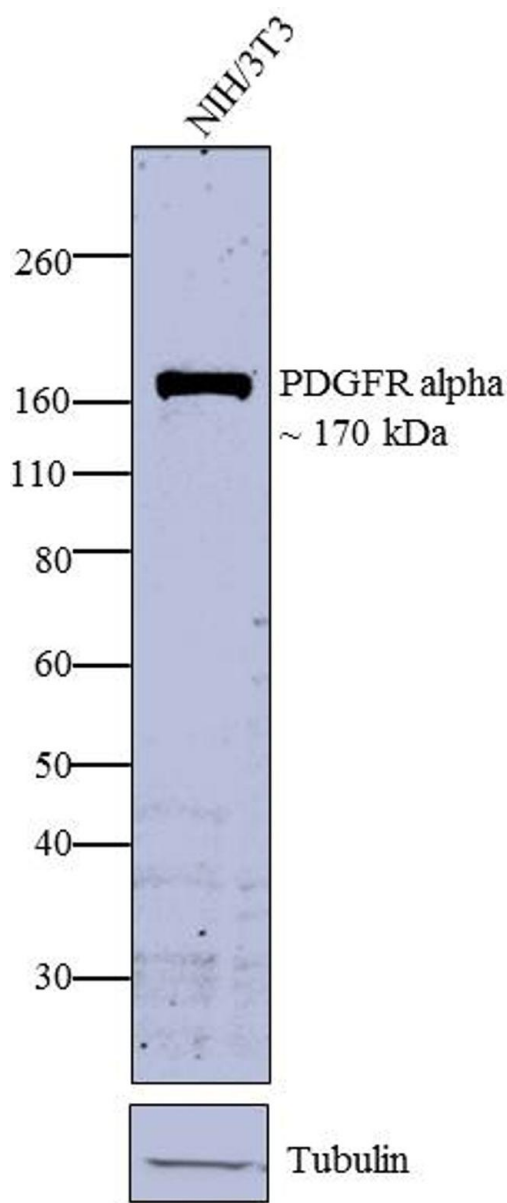
| Applications               | Tested | Dilution        | Published |
|----------------------------|--------|-----------------|-----------|
| Immunocytochemistry (ICC)  | ✓      | 2 µg/mL         |           |
| Immunofluorescence (IF)    | ✓      | 2 µg/mL         |           |
| Immunohistochemistry (IHC) | ✓      | Assay Dependent |           |
| Western Blot (WB)          | ✓      | 1-3 µg/mL       |           |

## Product Specific Information

PA5-16571 targets PDGFR alpha in IHC applications and shows reactivity with mouse, Rat, and Human samples.

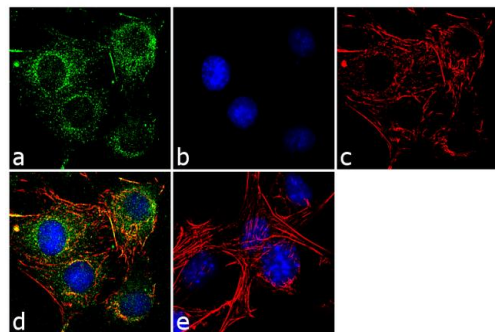
The PA5-16571 immunogen is a synthetic peptide derived from the C-terminus of the precursor form of human PDGFR, alpha.

## Product Images For PDGFRA Polyclonal Antibody



### PDGFRA Antibody (PA5-16571) in WB

Western blot analysis was performed on membrane enriched extract (30  $\mu$ g) of NIH/3T3 cells. The blots were probed with PDGFR alpha Rabbit Polyclonal Antibody (Product # PA5-16571, 2 $\mu$ g/mL) and detected by chemiluminescence using Goat anti-Rabbit IgG (H+L) Superclonal™ Secondary Antibody, HRP conjugate (Product # A27036, 0.4 $\mu$ g/mL, 1:2500 dilution). A ~ 170 kDa band corresponding to PDGFR alpha was observed. Known quantity of protein samples were electrophoresed using Novex® NuPAGE® 4-12 % Bis-Tris gel (Product # NP0321BOX), XCell SureLock™ Electrophoresis System (Product # EI0002) and Novex® Sharp Pre-Stained Protein Standard (Product # LC5800). Resolved proteins were then transferred onto a nitrocellulose membrane by overnight transfer method. The membrane was probed with the relevant primary and secondary Antibody following blocking with 5 % skimmed milk. Chemiluminescent detection was performed using Pierce™ ECL Western Blotting Substrate (Product # 32106).



### PDGFRA Antibody (PA5-16571) in IF

Immunofluorescence analysis of PDGFR alpha was performed using 70% confluent log phase NIH/3T3 cells. The cells were fixed with 4% paraformaldehyde for 10 minutes, permeabilized with 0.1% Triton™ X-100 for 10 minutes, and blocked with 1% BSA for 1 hour at room temperature. The cells were labeled with PDGFR alpha Rabbit Polyclonal Antibody (Product # PA5-16571) at 2 $\mu$ g/mL in 0.1% BSA and incubated for 3 hours at room temperature and then labeled with Goat anti-Rabbit IgG (H+L) Superclonal™ Secondary Antibody, Alexa Fluor® 488 conjugate (Product # A27034) at a dilution of 1:2000 for 45 minutes at room temperature (Panel a: green). Nuclei (Panel b: blue) were stained with SlowFade® Gold Antifade Mountant with DAPI (Product # S36938). F-actin (Panel c: red) was stained with Alexa Fluor® 555 Rhodamine Phalloidin (Product # R415, 1:300). Panel d represents the merged image showing punctated cytoplasmic localization. Panel e shows the no primary antibody control. The images were captured at 60X magnification.

For Research Use Only. Not for use in diagnostic procedures. Not for resale without express authorization. Products are warranted to operate or perform substantially in conformance with published Product specifications in effect at the time of sale, as set forth in the Production documentation, specifications and/or accompanying package inserts ("Documentation"). No claim of suitability for use in applications regulated by FDA is made. The warranty provided herein is valid only when used by properly trained individuals. Unless otherwise stated in the Documentation, this warranty is limited to one year from date of shipment when the Product is subjected to normal, proper and intended usage. This warranty does not extend to anyone other than the Buyer. Any model or sample furnished to Buyer is merely illustrative of the general type and quality of goods and does not represent that any Product will conform to such model or sample. NO OTHER WARRANTIES, EXPRESS OR IMPLIED, ARE GRANTED INCLUDING WITHOUT LIMITATION, IMPLIED WARRANTIES OF MERCHANTABILITY, FITNESS FOR ANY PARTICULAR PURPOSE, OR NON INFRINGEMENT. BUYER'S EXCLUSIVE REMEDY FOR NON-CONFORMING PRODUCTS DURING THE WARRANTY PERIOD IS LIMITED TO REPAIR, REPLACEMENT OF OR REFUND FOR THE NON-CONFORMING PRODUCT(S) AT SELLER'S SOLE OPTION. THERE IS NO OBLIGATION TO REPAIR, REPLACE OR REFUND FOR PRODUCTS AS THE RESULT OF (I) ACCIDENT, DISASTER OR EVENT OF FORCE MAJEURE, (II) MISUSE, FAULT OR NEGLIGENCE OF OR BY BUYER, (III) USE OF THE PRODUCTS IN A MANNER FOR WHICH THEY WERE NOT DESIGNED, OR (IV) IMPROPER STORAGE AND HANDLING OF THE PRODUCTS. Unless otherwise expressly stated on the Product or in the documentation accompanying the Product, the Product is intended for research only and is not to be used for any other purpose, including without limitation, unauthorized commercial uses, in vitro diagnostic uses, ex vivo or in vivo therapeutic uses, or any type of consumption by or application to human or animals.