

beta Tubulin Polyclonal Antibody

Product Details	
Size	500 µL
Species Reactivity	Human, Mouse, Rat
Published Species	Yeast, Rat, Sheep, Plant, Mouse, Human
Host/Isotype	Rabbit / IgG
Class	Polyclonal
Type	Antibody
Conjugate	Unconjugated
Immunogen	A synthetic peptide derived from aa 416-430 of human tubulin beta
Form	Liquid
Concentration	0.09 mg/mL
Purification	Affinity chromatography
Storage buffer	PBS, pH 7.6, with 1% BSA
Contains	0.1% sodium azide
Storage conditions	-20° C, Avoid Freeze/Thaw Cycles
RRID	AB_10986058

Applications	Tested Dilution	Publications
Western Blot (WB)	1:1,000	14 Publications
Immunohistochemistry (IHC)	-	1 Publication
Immunohistochemistry (Paraffin) (IHC (P))	1:200	-
Immunocytochemistry (ICC/IF)	1 µg/mL	3 Publications

Product Specific Information

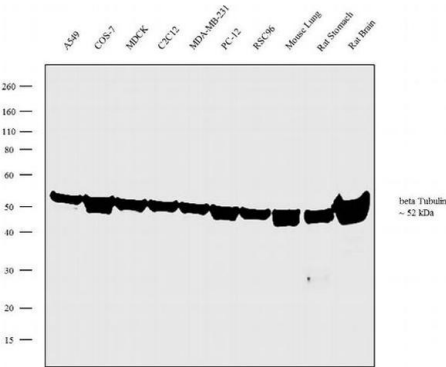
PA5-16863 targets Tubulin Beta in IHC (P), WB, and IP applications and shows reactivity with Amphibian, Bovine, Chicken, Fungi, Gerbil, Guinea Pig, Human, mouse, Porcine, Rat, Sea Urchin, and Yeast samples.

The PA5-16863 immunogen is a synthetic peptide derived from aa 416-430 of human tubulin beta.

Product Images For beta Tubulin Polyclonal Antibody

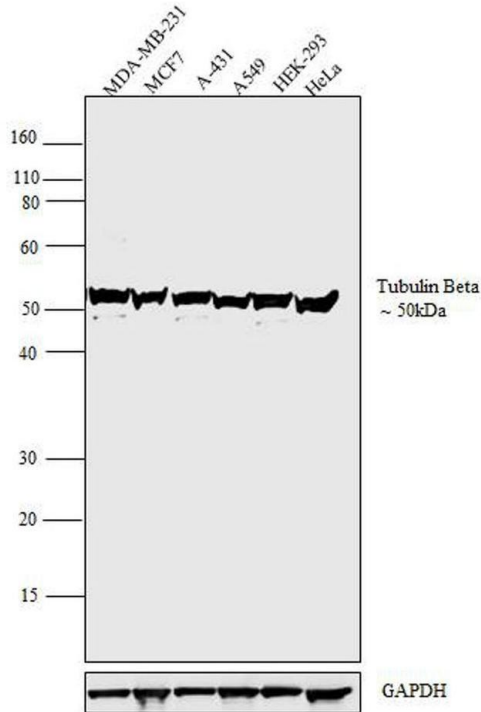
beta Tubulin Antibody (PA5-16863) in WB

Western blot analysis was performed on whole cell extracts (30µg lysate) of A549 (Lane 1), COS-7 (Lane 2), MDCK (Lane 3), C2C12 (Lane 4), MDA-MB-231 (Lane 5) PC-12 (Lane 6), RSC96 (Lane 7), tissue extracts of Mouse Lung (Lane 8), Rat Stomach (Lane 9) and Rat Brain (Lane 10). The blot was probed with Anti-beta Tubulin Rabbit Polyclonal Antibody (Product # PA5-16863, 1:1000 dilution) and detected by chemiluminescence using Goat anti-Rabbit IgG (H+L) Superclonal™ Secondary Antibody, HRP conjugate (Product # A28177, 0.25µg/mL, 1:4000 dilution). A 52 kDa band corresponding to beta Tubulin was observed across the cell lines and tissues tested. Known quantity of protein samples were electrophoresed using Novex® NuPAGE® 4-12 % Bis-Tris gel (Product # NP0321BOX), XCell SureLock™ Electrophoresis System (Product # EI0002) and Novex® Sharp Pre-Stained Protein Standard (Product # LC5800). Resolved proteins were then transferred onto a nitrocellulose membrane with iBlot® 2 Dry Blotting System (Product # IB21001). The membrane was probed with the relevant primary and secondary Antibody following blocking with 5 % skimmed milk. Chemiluminescent detection was performed using Pierce™ ECL Western Blotting Substrate (Product # 32106).



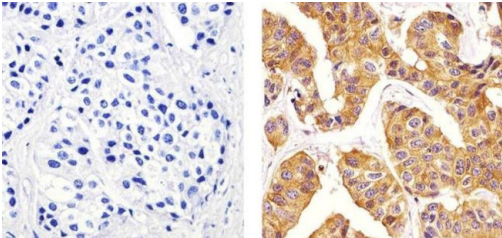
beta Tubulin Antibody (PA5-16863) in WB

Western blot analysis was performed on whole cell extracts (30 µg lysate) of MDA-MB-231 (Lane 1), MCF-7 (Lane 2), A431 (Lane 3), A549 (Lane 4), HEK 293 (Lane 5) and HeLa (Lane6). The blots were probed with Anti-Tubulin Beta Rabbit Polyclonal Antibody (Product # PA5-16863, 1:1000 dilution) and detected by chemiluminescence Goat Anti-Rabbit IgG (H+L) Secondary Antibody, HRP conjugate (Product # G-21234, 1:5000 dilution). A 50 kDa band corresponding to Tubulin was observed across cell lines tested. Known quantity of protein samples were electrophoresed using Novex® NuPAGE® 12 % Bis-Tris gel (Product # NP0341BOX), XCell SureLock™ Electrophoresis System (Product # EI0002) and Novex® Sharp Pre-Stained Protein Standard (Product # LC5800). Resolved proteins were then transferred onto a nitrocellulose membrane with iBlot® 2 Dry Blotting System (Product # IB21001). The membrane was probed with the relevant primary and secondary Antibody following blocking with 5 % skimmed milk. Chemiluminescent detection was performed using Pierce™ ECL Western Blotting Substrate (Product # 32106).



beta Tubulin Antibody (PA5-16863) in IHC (P)

Immunohistochemistry analysis of Tubulin Beta showing staining in the cytoplasm of paraffin-embedded human breast carcinoma (right) compared to a negative control without primary antibody (left). To expose target proteins, antigen retrieval was performed using 10mM sodium citrate (pH 6.0), microwaved for 8-15 min. Following antigen retrieval, tissues were blocked in 3% H2O2-methanol for 15 min at room temperature, washed with ddH2O and PBS, and then probed with a Tubulin Beta Rabbit Polyclonal Antibody (Product # PA5-16863) diluted in 3% BSA-PBS at a dilution of 1:20 for 1 hour at 37°C in a humidified chamber. Tissues were washed extensively in PBST and detection was performed using an HRP-conjugated secondary antibody followed by colorimetric detection using a DAB kit. Tissues were counterstained with hematoxylin and dehydrated with ethanol and xylene to prep for mounting.



View more figures on thermofisher.com

Western Blot (14)

<p>Molecular cell</p> <p>Unresolved stalled ribosome complexes restrict cell-cycle progression after genotoxic stress.</p> <p>"PA5-16863 was used in Western Blotting to show that ribosome stalling activates cell-cycl arrest, which may be prolonged due to inadequate functioning of ASCC to resolve the stalled ribosomes."</p> <p>Authors: Stoneley M,Harvey RF,Mulrone TE,Mordue R,Jukes-Jones R,Cain K,Lilley KS,Sawarkar R,Willis AE</p>	<p>Year 2022</p> <p>Species Mouse</p>
<p>International journal of molecular sciences</p> <p>The Gastroprotective Effect of Naringenin against Ethanol-Induced Gastric Ulcers in Mice through Inhibiting Oxidative and Inflammatory Responses.</p> <p>"Published figure using beta Tubulin polyclonal antibody (Product # PA5-16863) in Western Blot"</p> <p>Authors: Li WS,Lin SC,Chu CH,Chang YK,Zhang X,Lin CC,Tung YT</p>	<p>Year 2021</p> <p>Species Human</p>

View more WB references on thermofisher.com

Immunohistochemistry (1)

<p>Plant biotechnology journal</p> <p>CTP synthase is essential for early endosperm development by regulating nuclei spacing.</p> <p>"PA5-16863 was used in Immunohistochemistry to identify the rice mutant endospermless 2 which shows defects in the early stages of endosperm development."</p> <p>Authors: Yoon J,Cho LH,Kim SR,Tun W,Peng X,Pasriga R,Moon S,Hong WJ, Ji H,Jung KH,Jeon JS,An G</p>	<p>Year 2021</p> <p>Species Plant</p> <p>Dilution 1:50</p>
--	--

Immunocytochemistry (3)

<p>International journal of molecular medicine</p> <p>Study of the cytological features of bone marrow mesenchymal stem cells from patients with neuromyelitis optica.</p> <p>"PA5-16863 was used in Western Blotting to compare the proliferation, differentiation and senescence of bone marrow-derived mesenchymal stem cells from patients with Neuromyelitis optica with that of age- and sex-matched healthy subjects."</p> <p>Authors: Yang C,Yang Y, Ma L,Zhang GX,Shi FD,Yan Y,Chang G</p>	<p>Year 2019</p> <p>Species Human</p> <p>Dilution 1:100</p>
--	---

View more ICC/IF references on thermofisher.com

More applications with references on thermofisher.com

For Research Use Only. Not for use in diagnostic procedures. Not for resale without express authorization. Products are warranted to operate or perform substantially in conformance with published Product specifications in effect at the time of sale, as set forth in the Production documentation, specifications and/or accompanying package inserts ("Documentation"). No claim of suitability for use in applications regulated by FDA is made. The warranty provided herein is valid only when used by properly trained individuals. Unless otherwise stated in the Documentation, this warranty is limited to one year from date of shipment when the Product is subjected to normal, proper and intended usage. This warranty does not extend to anyone other than the Buyer. Any model or sample furnished to Buyer is merely illustrative of the general type and quality of goods and does not represent that any Product will conform to such model or sample. NO OTHER WARRANTIES, EXPRESS OR IMPLIED, ARE GRANTED INCLUDING WITHOUT LIMITATION, IMPLIED WARRANTIES OF MERCHANTABILITY, FITNESS FOR ANY PARTICULAR PURPOSE, OR NON INFRINGEMENT. BUYER'S EXCLUSIVE REMEDY FOR NON-CONFORMING PRODUCTS DURING THE WARRANTY PERIOD IS LIMITED TO REPAIR, REPLACEMENT OF OR REFUND FOR THE NON-CONFORMING PRODUCT(S) AT SELLER'S SOLE OPTION. THERE IS NO OBLIGATION TO REPAIR, REPLACE OR REFUND FOR PRODUCTS AS THE RESULT OF (I) ACCIDENT, DISASTER OR EVENT OF FORCE MAJEURE, (II) MISUSE, FAULT OR NEGLIGENCE OF OR BY BUYER, (III) USE OF THE PRODUCTS IN A MANNER FOR WHICH THEY WERE NOT DESIGNED, OR (IV) IMPROPER STORAGE AND HANDLING OF THE PRODUCTS. Unless otherwise expressly stated on the Product or in the documentation accompanying the Product, the Product is intended for research only and is not to be used for any other purpose, including without limitation, unauthorized commercial uses, in vitro diagnostic uses, ex vivo or in vivo therapeutic uses, or any type of consumption by or application to human or animals.