

# ATGL Polyclonal Antibody

## Product Details

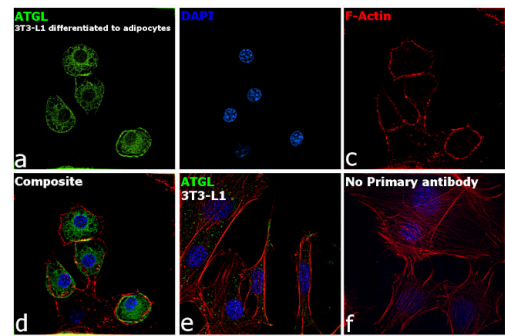
Size	100 µL
Species Reactivity	Human, Mouse
Published Species	Human, Mouse
Host/Isotype	Rabbit / IgG
Class	Polyclonal
Type	Antibody
Conjugate	Unconjugated
Immunogen	Synthetic peptide corresponding to a sequence around Pro186 of human ATGL
Form	Liquid
Concentration	142 µg/mL
Purification	Antigen affinity chromatography
Storage buffer	0.01M HEPES, pH 7.5, with 0.15M NaCl, 100µg/mL BSA, 50% glycerol
Contains	no preservative
Storage conditions	-20°C
RRID	AB_10982805

Applications	Tested Dilution	Publications
Western Blot (WB)	1:1,000	2 Publications
Immunohistochemistry (IHC)	-	1 Publication
Immunocytochemistry (ICC/IF)	1:400-1:1,600	1 Publication
Immunoprecipitation (IP)	1:100	-

## Product Specific Information

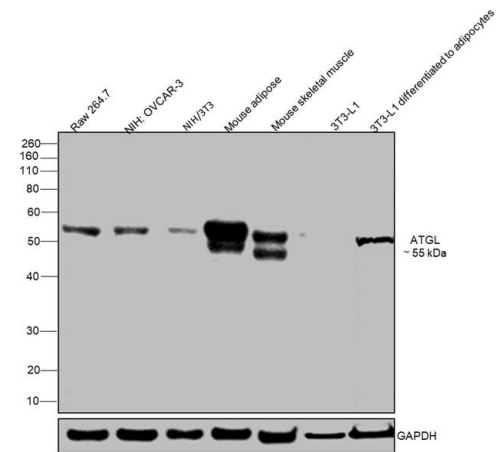
It is not recommended to aliquot this antibody.

Product Images For ATGL Polyclonal Antibody



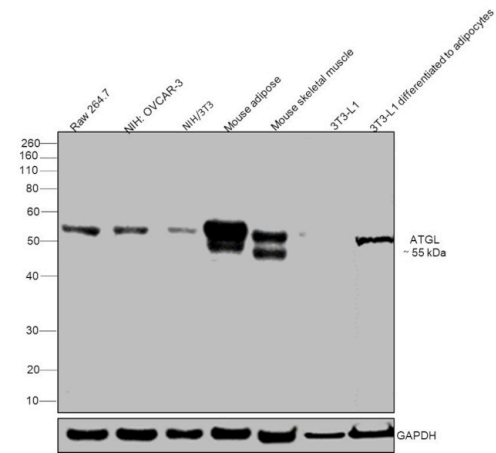
ATGL Antibody (PA5-17436)

Antibody specificity was demonstrated by detection of differential basal expression of the target across cell models owing to their inherent genetic constitution. Immunofluorescence analysis using ATGL Polyclonal Antibody (Product # PA5-17436) shows increased expression of ATGL in 3T3-L1 differentiated adipocytes in comparison to 3T3-L1. {RE}



ATGL Antibody (PA5-17436) in WB

Western blot was performed using ATGL Polyclonal Antibody (Product # PA5-17436) and a 55 kDa band corresponding to ATGL was observed across cell lines and tissues tested. Whole cell extracts (30 µg lysate) of Raw 264.7 (Lane 1), NIH: OVCAR-3 (Lane 2), NIH/3T3 (Lane 3), Mouse adipose (Lane 4), Mouse skeletal muscle (Lane 5), 3T3-L1 (Lane 6), 3T3-L1 differentiated to adipocytes (Lane 7) were electrophoresed using NuPAGE® 4-12 % Bis-Tris gel (Product # NP0321BOX). Resolved proteins were then transferred onto a nitrocellulose membrane (Product # IB23001) by iBlot® 2 Dry Blotting System (Product # IB21001). The blot was probed with the primary antibody (1:1000 dilution) and detected by chemiluminescence with Goat anti-Rabbit IgG (Heavy Chain) Superclonal™ Recombinant Secondary Antibody, HRP (Product # A27036, 1:4000 dilution) using the iBright FL 1000 (Product # A32752). Chemiluminescent detection was performed using Novex® ECL Chemiluminescent Substrate Reagent Kit (Product # WP20005).



ATGL Antibody (PA5-17436)

Antibody specificity was demonstrated by detection of differential basal expression of the target across tissues owing to their inherent genetic constitution. Higher expression of ATGL was observed in 3T3-L1 differentiated adipocytes in comparison to 3T3-L1 using ATGL Polyclonal Antibody (Product # PA5-17436) in western blot. {RE}

View more figures on [thermofisher.com](https://thermofisher.com)

Western Blot (2)

<p>Journal of experimental &amp; clinical cancer research : CR</p> <p><b>BETi enhance ATGL expression and its lipase activity to exert their antitumoral effects in triple-negative breast cancer (TNBC) cells.</b></p> <p>"Published figure using ATGL polyclonal antibody (Product # PA5-17436) in Western Blot"</p> <p>Authors: Rossi T,Zamponi R,Chirico M,Pisanu ME,Iorio E,Torricelli F,Gugnoni M,Ciarrocchi A,Pistoni M</p>	<p>Year 2023</p> <p>Species Human</p> <p>Dilution 1:100</p>
<p>The American journal of pathology</p> <p><b>Carboxyl Ester Lipase May Not Mediate Lipotoxic Injury during Severe Acute Pancreatitis.</b></p> <p>"PA5-17436 was used in Western Blotting to determine the pancreatic lipase(s) regulating lipotoxicity during acute pancreatitis."</p> <p>Authors: Khatua B,Trivedi RN,Noel P,Patel K,Singh R,de Oliveira C,Trivedi S,Mishra V,Lowe M,Singh VP</p>	<p>Year 2019</p> <p>Species Mouse</p> <p>Dilution 1:1000</p>

Immunohistochemistry (1)

<p>Journal of experimental &amp; clinical cancer research : CR</p> <p><b>BETi enhance ATGL expression and its lipase activity to exert their antitumoral effects in triple-negative breast cancer (TNBC) cells.</b></p> <p>"Published figure using ATGL polyclonal antibody (Product # PA5-17436) in Western Blot"</p> <p>Authors: Rossi T,Zamponi R,Chirico M,Pisanu ME,Iorio E,Torricelli F,Gugnoni M,Ciarrocchi A,Pistoni M</p>	<p>Year 2023</p> <p>Species Human</p> <p>Dilution 1:100</p>
--	---

Immunocytochemistry (1)

<p>Journal of experimental &amp; clinical cancer research : CR</p> <p><b>BETi enhance ATGL expression and its lipase activity to exert their antitumoral effects in triple-negative breast cancer (TNBC) cells.</b></p> <p>"Published figure using ATGL polyclonal antibody (Product # PA5-17436) in Western Blot"</p> <p>Authors: Rossi T,Zamponi R,Chirico M,Pisanu ME,Iorio E,Torricelli F,Gugnoni M,Ciarrocchi A,Pistoni M</p>	<p>Year 2023</p> <p>Species Human</p> <p>Dilution 1:100</p>
--	---

For Research Use Only. Not for use in diagnostic procedures. Not for resale without express authorization. Products are warranted to operate or perform substantially in conformance with published Product specifications in effect at the time of sale, as set forth in the Production documentation, specifications and/or accompanying package inserts ("Documentation"). No claim of suitability for use in applications regulated by FDA is made. The warranty provided herein is valid only when used by properly trained individuals. Unless otherwise stated in the Documentation, this warranty is limited to one year from date of shipment when the Product is subjected to normal, proper and intended usage. This warranty does not extend to anyone other than the Buyer. Any model or sample furnished to Buyer is merely illustrative of the general type and quality of goods and does not represent that any Product will conform to such model or sample. NO OTHER WARRANTIES, EXPRESS OR IMPLIED, ARE GRANTED INCLUDING WITHOUT LIMITATION, IMPLIED WARRANTIES OF MERCHANTABILITY, FITNESS FOR ANY PARTICULAR PURPOSE, OR NON INFRINGEMENT. BUYER'S EXCLUSIVE REMEDY FOR NON-CONFORMING PRODUCTS DURING THE WARRANTY PERIOD IS LIMITED TO REPAIR, REPLACEMENT OF OR REFUND FOR THE NON-CONFORMING PRODUCT(S) AT SELLER'S SOLE OPTION. THERE IS NO OBLIGATION TO REPAIR, REPLACE OR REFUND FOR PRODUCTS AS THE RESULT OF (i) ACCIDENT, DISASTER OR EVENT OF FORCE MAJEURE, (ii) MISUSE, FAULT OR NEGLIGENCE OF OR BY BUYER, (iii) USE OF THE PRODUCTS IN A MANNER FOR WHICH THEY WERE NOT DESIGNED, OR (iv) IMPROPER STORAGE AND HANDLING OF THE PRODUCTS. Unless otherwise expressly stated on the Product or in the documentation accompanying the Product, the Product is intended for research only and is not to be used for any other purpose, including without limitation, unauthorized commercial uses, in vitro diagnostic uses, ex vivo or in vivo therapeutic uses, or any type of consumption by or application to human or animals.