

# CK1 alpha Polyclonal Antibody

## Product Details

Size	100 µL
Species Reactivity	Bovine, Chicken, Human, Mouse, Rat, Xenopus, Zebrafish
Published Species	Human
Host/Isotype	Rabbit / IgG
Class	Polyclonal
Type	Antibody
Conjugate	Unconjugated
Immunogen	Synthetic peptide corresponding to amino acid residues near the middle of human casein kinase I-alpha 1
Form	Liquid
Purification	Protein A
Storage buffer	0.01M HEPES, pH 7.5, with 50% glycerol, 100µg/mL BSA, 0.15M NaCl
Contains	no preservative
Storage Conditions	-20°C
RRID	AB_10987461

Applications	Tested Dilution	Publications
Western Blot (WB)	1:1000	1 Publication

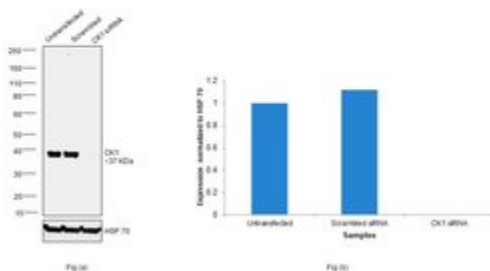
## Product Specific Information

It is not recommended to aliquot this antibody.

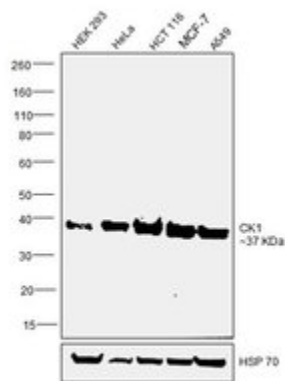
## Advanced Verification Data

### CK1 alpha Antibody (PA5-17536)

Antibody specificity was demonstrated by siRNA mediated knockdown of target protein. HEK 293 cells were transfected with CK1 siRNA and decrease in signal intensity was observed in western blot application using Anti- CK1 Polyclonal Antibody (Product # PA5-17536). Knockdown validation info.



## Product Images For CK1 alpha Polyclonal Antibody

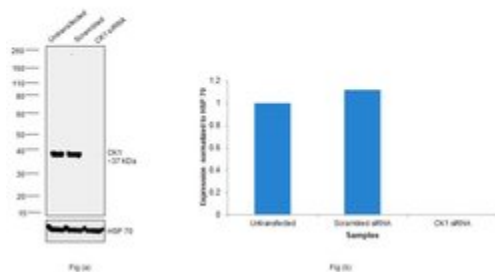


### CK1 alpha Antibody (PA5-17536) in WB

Western blot was performed using Anti-CK1 Polyclonal Antibody (Product # PA5-17536) and a 37 kDa band corresponding to CK1 was observed across cell lines tested. Whole cell extracts (30 µg lysate) of HEK 293 (Lane 1), HeLa (Lane 2), HCT 116 (Lane 3), MCF-7 (Lane 4) and A549 (Lane 5) were electrophoresed using NuPAGE™ 4-12% Bis-Tris Protein Gel (Product # NP0322BOX). Resolved proteins were then transferred onto a nitrocellulose membrane (Product # IB23001) by iBlot® 2 Dry Blotting System (Product # IB21001). The blot was probed with the primary antibody (1:1000 dilution) and detected by chemiluminescence with Goat anti-Rabbit IgG (H+L) Superclonal™ Recombinant Secondary Antibody, HRP (Product # A27036, 1:4000 dilution) using the iBright FL 1000 (Product # A32752). Chemiluminescent detection was performed using Novex® ECL Chemiluminescent Substrate Reagent Kit (Product # WP20005).

### CK1 alpha Antibody (PA5-17536) in WB

Knockdown of CK1 was achieved by transfecting HEK-293 cells with CK1 specific siRNAs (Silencer® select Product # s3625). Western blot analysis (Fig. a) was performed using whole cell extracts from the CK1 knockdown cells (lane 3), non-specific scrambled siRNA transfected cells (lane 2) and untransfected cells (lane 1). The blots were probed with CK1 Polyclonal Antibody (Product # PA5-17536, 1:1000 dilution) and chemiluminescence with Goat anti-Rabbit IgG (H+L) Superclonal™ Recombinant Secondary Antibody, HRP (Product # A27036, 1:4000 dilution). Densitometric analysis of this western blot is shown in histogram (Fig. b). Decrease in signal upon siRNA mediated knock down confirms that antibody is specific to CK1



[View more figures on thermofisher.com](#)

## 1 Reference

### Western Blot (1)

#### Autophagy

#### Identification of modulators of autophagic flux in an image-based high content siRNA screen.

"PA517536 was used in western blot to identify modulators of autophagic flux using an image-based siRNA screen"

Authors: Hale CM, Cheng Q, Ortuno D, Huang M, Nojima D, Kassner PD, Wang S, Ollmann MM, Carlisle HJ

**Species**  
Human

**Dilution**  
1:1000

**Year**  
2016

For Research Use Only. Not for use in diagnostic procedures. Not for resale without express authorization. Products are warranted to operate or perform substantially in conformance with published Product specifications in effect at the time of sale, as set forth in the Production documentation, specifications and/or accompanying package inserts ("Documentation"). No claim of suitability for use in applications regulated by FDA is made. The warranty provided herein is valid only when used by properly trained individuals. Unless otherwise stated in the Documentation, this warranty is limited to one year from date of shipment when the Product is subjected to normal, proper and intended usage. This warranty does not extend to anyone other than the Buyer. Any model or sample furnished to Buyer is merely illustrative of the general type and quality of goods and does not represent that any Product will conform to such model or sample. NO OTHER WARRANTIES, EXPRESS OR IMPLIED, ARE GRANTED INCLUDING WITHOUT LIMITATION, IMPLIED WARRANTIES OF MERCHANTABILITY, FITNESS FOR ANY PARTICULAR PURPOSE, OR NON-INFRINGEMENT. BUYER'S EXCLUSIVE REMEDY FOR NON-CONFORMING PRODUCTS DURING THE WARRANTY PERIOD IS LIMITED TO REPAIR, REPLACEMENT OF OR REFUND FOR THE NON-CONFORMING PRODUCT(S) AT SELLER'S SOLE OPTION. THERE IS NO OBLIGATION TO REPAIR, REPLACE OR REFUND FOR PRODUCTS AS THE RESULT OF (I) ACCIDENT, DISASTER OR EVENT OF FORCE MAJEURE, (II) MISUSE, FAULT OR NEGLIGENCE OF OR BY BUYER, (III) USE OF THE PRODUCTS IN A MANNER FOR WHICH THEY WERE NOT DESIGNED, OR (IV) IMPROPER STORAGE AND HANDLING OF THE PRODUCTS. Unless otherwise expressly stated on the Product or in the documentation accompanying the Product, the Product is intended for research only and is not to be used for any other purpose, including without limitation, unauthorized commercial uses, in vitro diagnostic uses, ex vivo or in vivo therapeutic uses, or any type of consumption by or application to human or animals.