

Cannabinoid Receptor 1 Polyclonal Antibody

Product Details	
Size	100 µg
Species Reactivity	Human
Host/Isotype	Goat / IgG
Class	Polyclonal
Type	Antibody
Conjugate	Unconjugated
Immunogen	Synthetic peptide sequence (HTSEDGKVQVTRPDQ) corresponding to the internal amino acids of CNR1
Form	Liquid
Concentration	0.5 mg/mL
Purification	Ammonium sulfate precipitation
Storage buffer	TBS, pH 7.3, with 0.5% BSA
Contains	0.02% sodium azide
Storage conditions	-20° C, Avoid Freeze/Thaw Cycles
RRID	AB_10982519

Applications	Tested Dilution	Publications
Western Blot (WB)	0.5-2 µg/mL	-

Product Specific Information

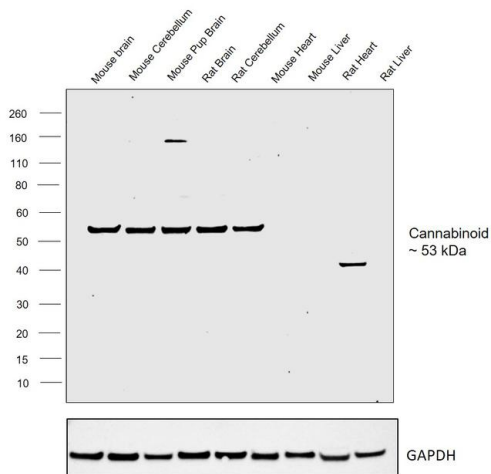
This antibody is predicted to react with canine and rat based on sequence homology.

This antibody is tested in Peptide ELISA: antibody detection limit dilution 32,000.

Product Images For Cannabinoid Receptor 1 Polyclonal Antibody

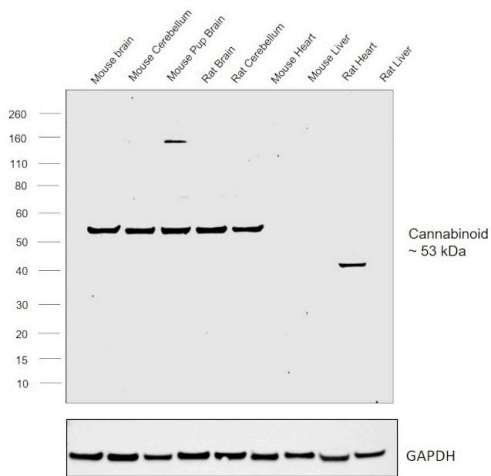
Cannabinoid Receptor 1 Antibody (PA5-18427) in WB

Western blot was performed using Anti-Cannabinoid Receptor 1 Antibody, (Product # PA5-18427) and a 53 kDa band corresponding to Cannabinoid Receptor 1 was observed across tissues except in Mouse Heart, Mouse Liver, Rat Heart and in Rat Liver which are reported to be negative. Tissue extracts (30 µg lysate) of Mouse Brain (Lane 1), Mouse Cerebellum (Lane 2), Mouse Pup Brain (Lane 3), Rat Brain (Lane 4), Rat Cerebellum (Lane 5), Mouse Heart (Lane 6), Mouse Liver (Lane 7), Rat Heart (Lane 8) and Rat Liver (Lane 9) were electrophoresed using Novex® NuPAGE® 4-12 % Bis-Tris gel (Product # NP0321BOX). Resolved proteins were then transferred onto a nitrocellulose membrane (Product # IB23001) by iBlot® 2 Dry Blotting System (Product # IB21001). The blots were probed with the primary antibody (0.1 µg/mL) and detected by chemiluminescence with Rabbit anti-Goat IgG Heavy Chain, Superclonal™ Recombinant Secondary Antibody, HRP conjugate (Product # A27014, 1:4,000 dilution) using the iBright FL 1000 (Product # A32752). Chemiluminescent detection was performed using Novex® ECL Chemiluminescent Substrate Reagent Kit (Product # WP20005).



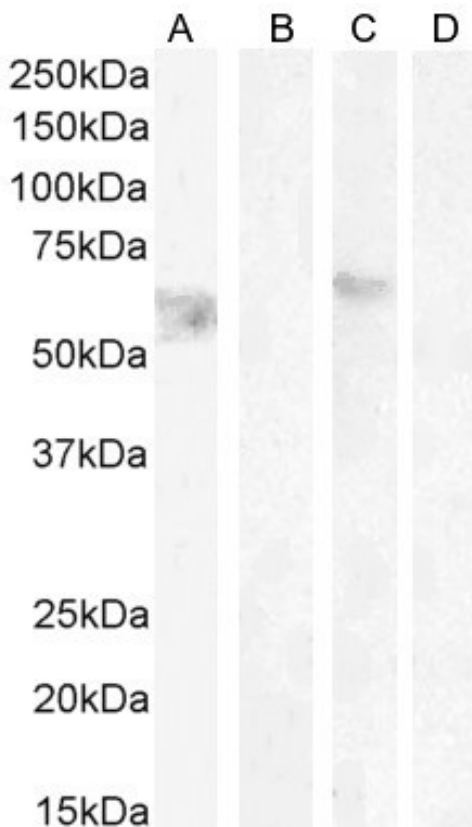
Cannabinoid Receptor 1 Antibody (PA5-18427)

Antibody specificity was demonstrated by detection of differential basal expression of the target across tissue and cell lines tested owing to their inherent genetic constitution. Relative expression of Cannabinoid receptor 1 was observed in Mouse Brain, Mouse Cerebellum, Mouse Pup Brain, Rat Brain, Rat Cerebellum in comparison to Mouse Heart, Mouse Liver, Rat Heart and in Rat Liver using Anti-Cannabinoid Receptor 1 Antibody, (Product # PA5-18427) in Western Blot. {RE}



Cannabinoid Receptor 1 Antibody (PA5-18427) in WB

Western blot analysis of Cannabinoid Receptor 1 using Cannabinoid Receptor 1 Polyclonal Antibody (Product # PA5-18427) (1 µg/mL) in staining of HeLa lysate non-glycosylated (A) + peptide (B) and (0.5 µg/mL) HeLa lysate glycosylated (C) + peptide (D), (35 µg protein in RIPA buffer). Detected by chemiluminescence.



For Research Use Only. Not for use in diagnostic procedures. Not for resale without express authorization. Products are warranted to operate or perform substantially in conformance with published Product specifications in effect at the time of sale, as set forth in the Production documentation, specifications and/or accompanying package inserts ("Documentation"). No claim of suitability for use in applications regulated by FDA is made. The warranty provided herein is valid only when used by properly trained individuals. Unless otherwise stated in the Documentation, this warranty is limited to one year from date of shipment when the Product is subjected to normal, proper and intended usage. This warranty does not extend to anyone other than the Buyer. Any model or sample furnished to Buyer is merely illustrative of the general type and quality of goods and does not represent that any Product will conform to such model or sample. NO OTHER WARRANTIES, EXPRESS OR IMPLIED, ARE GRANTED INCLUDING WITHOUT LIMITATION, IMPLIED WARRANTIES OF MERCHANTABILITY, FITNESS FOR ANY PARTICULAR PURPOSE, OR NON INFRINGEMENT. BUYER'S EXCLUSIVE REMEDY FOR NON-CONFORMING PRODUCTS DURING THE WARRANTY PERIOD IS LIMITED TO REPAIR, REPLACEMENT OF OR REFUND FOR THE NON-CONFORMING PRODUCT(S) AT SELLER'S SOLE OPTION. THERE IS NO OBLIGATION TO REPAIR, REPLACE OR REFUND FOR PRODUCTS AS THE RESULT OF (i) ACCIDENT, DISASTER OR EVENT OF FORCE MAJEURE, (ii) MISUSE, FAULT OR NEGLIGENCE OF OR BY BUYER, (iii) USE OF THE PRODUCTS IN A MANNER FOR WHICH THEY WERE NOT DESIGNED, OR (iv) IMPROPER STORAGE AND HANDLING OF THE PRODUCTS. Unless otherwise expressly stated on the Product or in the documentation accompanying the Product, the Product is intended for research only and is not to be used for any other purpose, including without limitation, unauthorized commercial uses, in vitro diagnostic uses, ex vivo or in vivo therapeutic uses, or any type of consumption by or application to human or animals.