

PTCH Polyclonal Antibody

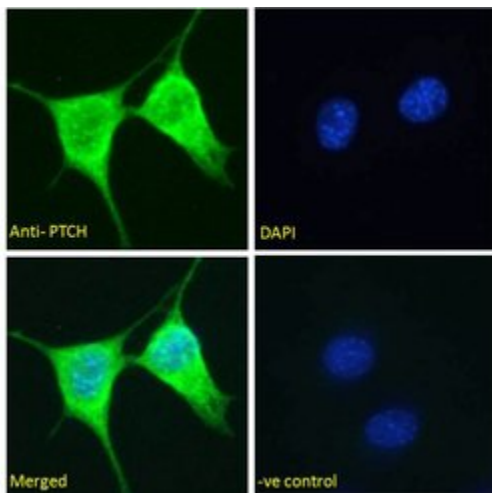
Product Details	
Size	100 µg
Species Reactivity	Human, Mouse
Host/Isotype	Goat / IgG
Class	Polyclonal
Type	Antibody
Conjugate	Unconjugated
Immunogen	Synthetic peptide sequence (ELQDVECEERPR) corresponding to the C-terminus amino acids of PTCH1
Form	Liquid
Concentration	0.5 mg/mL
Purification	Antigen affinity chromatography
Storage buffer	TBS, pH 7.3, with 0.5% BSA
Contains	0.02% sodium azide
Storage conditions	-20° C, Avoid Freeze/Thaw Cycles
RRID	AB_10979628

Applications	Tested Dilution	Publications
Immunohistochemistry (IHC)	8 µg/mL	-
Immunocytochemistry (ICC/IF)	Assay-dependent	-

Product Specific Information

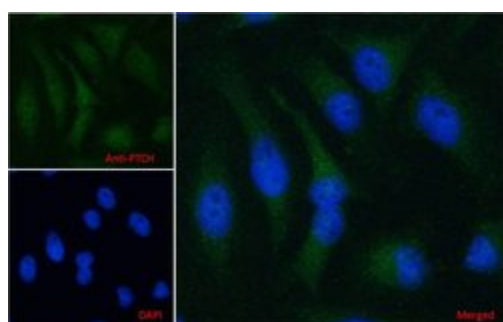
This antibody is predicted to react with mouse and rat based on sequence homology.

Product Images For PTCH Polyclonal Antibody



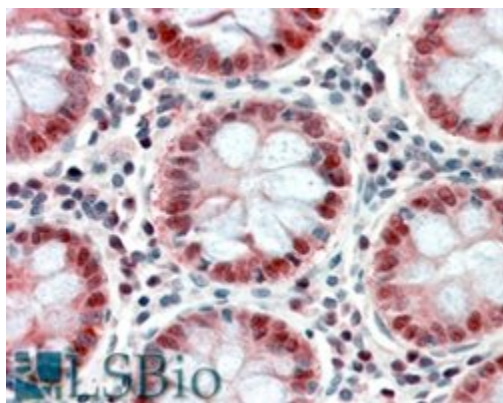
PTCH Antibody (PA5-18454) in ICC/IF

Immunofluorescence analysis of PTCH in NIH3T3 cells using a PTCH monoclonal antibody (Product # PA5-18454) at 5 µg/mL for 1hr. The cells were paraformaldehyde fixed and permeabilized with 0.15% Triton. Primary incubation was followed by Alexa Fluor 488 secondary antibody (2 µg/mL) showing Golgi/membrane staining. The nuclear stain is DAPI (blue). Negative control: Unimmunized goat IgG (5 µg/mL) followed by Alexa Fluor 488 secondary antibody (2 µg/mL).



PTCH Antibody (PA5-18454) in ICC/IF

Immunofluorescence analysis of PTCH in HeLa cells using a PTCH monoclonal antibody (Product # PA5-18454) at 5 µg/mL for 1hr. The cells were paraformaldehyde fixed and permeabilized with 0.15% Triton. Primary incubation was followed by Alexa Fluor 488 secondary antibody (1 µg/mL) showing cytoplasmic staining. The nuclear stain is DAPI (blue).



PTCH Antibody (PA5-18454) in IHC

Immunohistochemical analysis of PTCH in Human Colon using a PTCH polyclonal antibody (Product # PA5-18454) at a concentration of 3.8 µg/mL. The sample was paraffin embedded, and heat treated antigen retrieval was used to detect the target with AP staining.

For Research Use Only. Not for use in diagnostic procedures. Not for resale without express authorization. Products are warranted to operate or perform substantially in conformance with published Product specifications in effect at the time of sale, as set forth in the Production documentation, specifications and/or accompanying package inserts ("Documentation"). No claim of suitability for use in applications regulated by FDA is made. The warranty provided herein is valid only when used by properly trained individuals. Unless otherwise stated in the Documentation, this warranty is limited to one year from date of shipment when the Product is subjected to normal, proper and intended usage. This warranty does not extend to anyone other than the Buyer. Any model or sample furnished to Buyer is merely illustrative of the general type and quality of goods and does not represent that any Product will conform to such model or sample. NO OTHER WARRANTIES, EXPRESS OR IMPLIED, ARE GRANTED INCLUDING WITHOUT LIMITATION, IMPLIED WARRANTIES OF MERCHANTABILITY, FITNESS FOR ANY PARTICULAR PURPOSE, OR NON INFRINGEMENT. BUYER'S EXCLUSIVE REMEDY FOR NON-CONFORMING PRODUCTS DURING THE WARRANTY PERIOD IS LIMITED TO REPAIR, REPLACEMENT OF OR REFUND FOR THE NON-CONFORMING PRODUCT(S) AT SELLER'S SOLE OPTION. THERE IS NO OBLIGATION TO REPAIR, REPLACE OR REFUND FOR PRODUCTS AS THE RESULT OF (I) ACCIDENT, DISASTER OR EVENT OF FORCE MAJEURE, (II) MISUSE, FAULT OR NEGLIGENCE OF OR BY BUYER, (III) USE OF THE PRODUCTS IN A MANNER FOR WHICH THEY WERE NOT DESIGNED, OR (IV) IMPROPER STORAGE AND HANDLING OF THE PRODUCTS. Unless otherwise expressly stated on the Product or in the documentation accompanying the Product, the Product is intended for research only and is not to be used for any other purpose, including without limitation, unauthorized commercial uses, in vitro diagnostic uses, ex vivo or in vivo therapeutic uses, or any type of consumption by or application to human or animals.