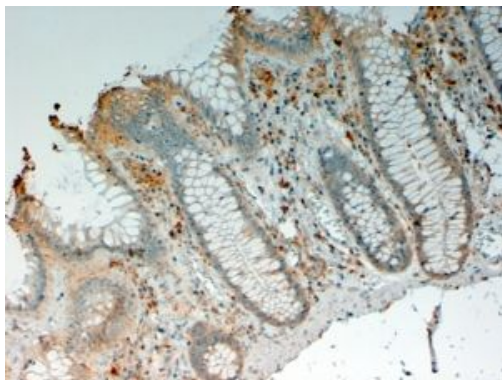


IL-12 p40 Polyclonal Antibody

Product Details	
Size	100 µg
Species Reactivity	Human
Host/Isotope	Goat / IgG
Class	Polyclonal
Type	Antibody
Conjugate	Unconjugated
Immunogen	Synthetic peptide sequence (QGKSKREKKDRVFTD) corresponding to the internal amino acids of IL12B
Form	Liquid
Concentration	0.5 mg/mL
Purification	Antigen affinity chromatography
Storage buffer	TBS, pH 7.3, with 0.5% BSA
Contains	0.02% sodium azide
Storage Conditions	-20° C, Avoid Freeze/Thaw Cycles
RRID	AB_10976672

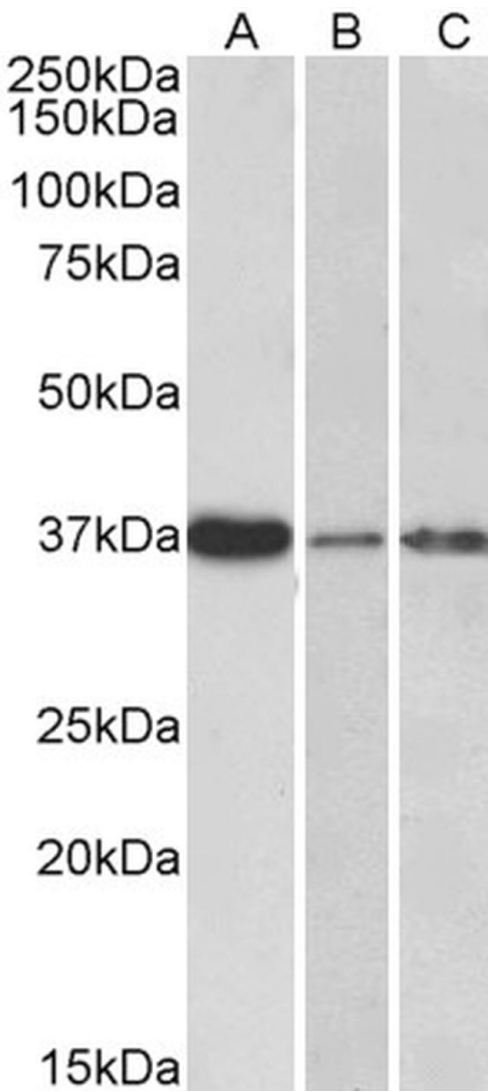
Applications	Tested	Dilution	Published
Immunohistochemistry (IHC)	✓	4-6 µg/mL	
Western Blot (WB)	✓	0.3-1 µg/mL	

Product Images For IL-12 p40 Polyclonal Antibody



IL-12 p40 Antibody (PA5-18740) in IHC

Immunohistochemical staining of paraffin embedded of Human Colon using Product # PA5-18740 at a concentration of 4 µg/mL. The tissue was processed by steamed antigen retrieval with citrate buffer pH 9 and stained with HRP.



IL-12 p40 Antibody (PA5-18740) in WB

Western blot analysis of IL-12 p40 by a IL-12 p40 monoclonal antibody (Product # PA5-18740) at a concentration of 0.3 $\mu\text{g}/\text{mL}$. Human Liver (A), Skin (B) and Tonsil (C) lysate (35 μg protein in RIPA buffer). Detected by chemiluminescence.

IL-12 p40 Antibody (PA5-18740) in WB

Western Blot staining of Human Liver lysate using Product # PA5-18740 at a concentration of 0.1 µg/mL, the primary antibody incubation was 1 hour and the detection method was chemiluminescence.



250kDa
150kDa
100kDa

75kDa

50kDa

37kDa

25kDa

20kDa

15kDa

For Research Use Only. Not for use in diagnostic procedures. Not for resale without express authorization. Products are warranted to operate or perform substantially in conformance with published Product specifications in effect at the time of sale, as set forth in the Production documentation, specifications and/or accompanying package inserts ("Documentation"). No claim of suitability for use in applications regulated by FDA is made. The warranty provided herein is valid only when used by properly trained individuals. Unless otherwise stated in the Documentation, this warranty is limited to one year from date of shipment when the Product is subjected to normal, proper and intended usage. This warranty does not extend to anyone other than the Buyer. Any model or sample furnished to Buyer is merely illustrative of the general type and quality of goods and does not represent that any Product will conform to such model or sample. NO OTHER WARRANTIES, EXPRESS OR IMPLIED, ARE GRANTED INCLUDING WITHOUT LIMITATION, IMPLIED WARRANTIES OF MERCHANTABILITY, FITNESS FOR ANY PARTICULAR PURPOSE, OR NON INFRINGEMENT. BUYER'S EXCLUSIVE REMEDY FOR NON-CONFORMING PRODUCTS DURING THE WARRANTY PERIOD IS LIMITED TO REPAIR, REPLACEMENT OF OR REFUND FOR THE NON-CONFORMING PRODUCT(S) AT SELLER'S SOLE OPTION. THERE IS NO OBLIGATION TO REPAIR, REPLACE OR REFUND FOR PRODUCTS AS THE RESULT OF (I) ACCIDENT, DISASTER OR EVENT OF FORCE MAJEURE, (II) MISUSE, FAULT OR NEGLIGENCE OF OR BY BUYER, (III) USE OF THE PRODUCTS IN A MANNER FOR WHICH THEY WERE NOT DESIGNED, OR (IV) IMPROPER STORAGE AND HANDLING OF THE PRODUCTS. Unless otherwise expressly stated on the Product or in the documentation accompanying the Product, the Product is intended for research only and is not to be used for any other purpose, including without limitation, unauthorized commercial uses, in vitro diagnostic uses, ex vivo or in vivo therapeutic uses, or any type of consumption by or application to human or animals.