

SNAP25 Polyclonal Antibody

| Product Details | |
|--------------------|---|
| Size | 100 µg |
| Species Reactivity | Human, Mouse, Rat, Zebrafish |
| Host/Isotype | Rabbit / IgG |
| Class | Polyclonal |
| Type | Antibody |
| Conjugate | Unconjugated |
| Immunogen | Synthetic peptide conjugated to KLH derived from within residues 150 to the C-terminus of Human SNAP25. |
| Form | Liquid |
| Concentration | 1 mg/mL |
| Purification | Antigen affinity chromatography |
| Storage buffer | PBS, pH 7.4 |
| Contains | 0.02% sodium azide |
| Storage conditions | -20°C or -80°C if preferred |
| RRID | AB_10986997 |

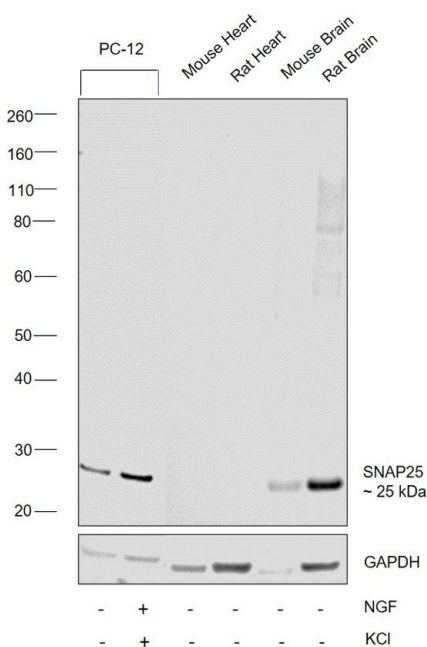
| Applications | Tested Dilution | Publications |
|------------------------------|-----------------|--------------|
| Western Blot (WB) | 1 µg/mL | - |
| Immunocytochemistry (ICC/IF) | 1-5 µg/mL | - |
| Immunoprecipitation (IP) | 5 µg/mL | - |

Product Specific Information

This antibody is predicted to react with chicken and cow based on sequence homology.

Store antibody at 4°C for 1-2 weeks. For long-term storage, store at -20°C.

Product Images For SNAP25 Polyclonal Antibody

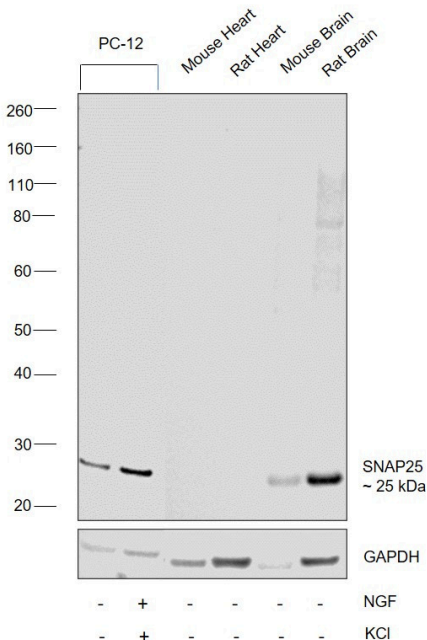


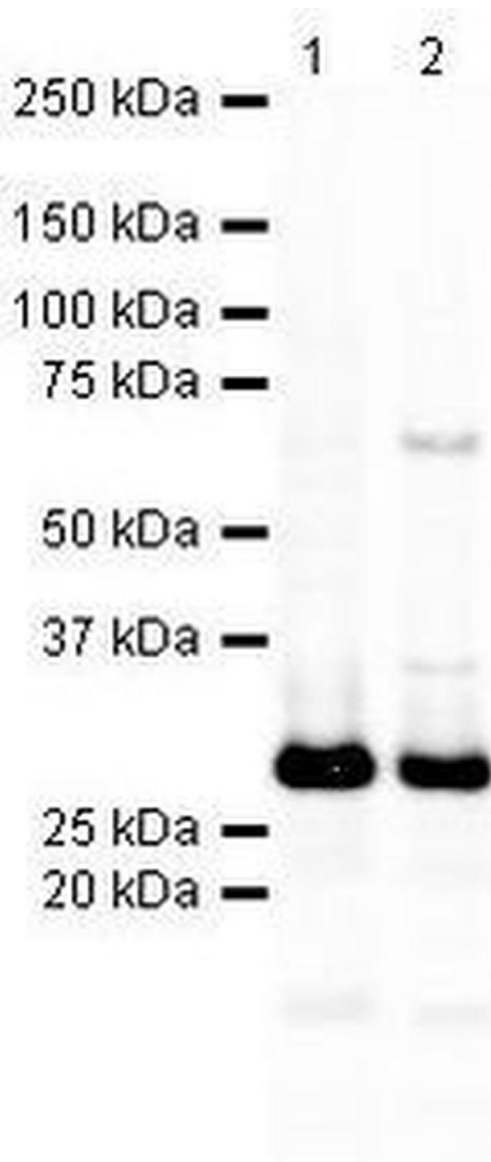
SNAP25 Antibody (PA5-19701) in WB

Western blot was performed using Anti-SNAP25 Polyclonal Antibody (Product # PA5-19701) and a 25 kDa band corresponding to Synaptosomal-associated protein 25 was observed across the cell lines and tissues tested. Whole cell extracts (30 µg lysate) of PC-12 (Lane 1), PC-12 treated with NGF and KCl (NGF at 200 nM, KCl at 50 nM for 7 days) (Lane 2) and tissue extracts of Mouse Heart (Lane 3), Rat Heart (Lane 4), Mouse Brain (Lane 5), Rat Brain (Lane 6) were electrophoresed using NuPAGE™ 4-12% Bis-Tris Protein Gel (Product # NP0321BOX). Resolved proteins were then transferred onto a Nitrocellulose membrane (Product # IB23001) by iBlot® 2 Dry Blotting System (Product # IB21001). The blot was probed with the primary antibody (1 µg/mL) and detected by chemiluminescence with Goat anti-Rabbit IgG (Heavy Chain) Superclonal™ Recombinant Secondary Antibody, HRP (Product # A27036, 1:10,000 dilution) using the iBright FL 1000 (Product # A32752). Chemiluminescent detection was performed using Novex® ECL Chemiluminescent Substrate Reagent Kit (Product # WP20005).

SNAP25 Antibody (PA5-19701)

Antibody specificity was demonstrated by detection of differential basal expression of the target across cell lines and tissues tested owing to their inherent genetic constitution. Relative expression of Synaptosomal-associated protein 25 was observed in PC-12 cell line upon differentiation using NGF treatment as compared to PC-12 and Mouse and Rat Brain as compared to Mouse and Rat Heart using Anti-SNAP25 Polyclonal Antibody (Product # PA5-19701) in Western Blot. {RE}





SNAP25 Antibody (PA5-19701) in WB

Western blot analysis of Mouse Spinal Cord Tissue Lysate using Product # PA5-19701, SNAP25 primary antibody at a dilution of 1 µg/mL (lane 1). Product # PA5-19701 staining of Rat Spinal Cord Tissue Lysate at a dilution of 1 µg/mL (lane 2). Blot treated with a secondary IR Dye680-conjugated Goat polyclonal anti-Rabbit antibody was used at a dilution of 1:10000.

[View more figures on thermofisher.com](https://thermofisher.com)

For Research Use Only. Not for use in diagnostic procedures. Not for resale without express authorization. Products are warranted to operate or perform substantially in conformance with published Product specifications in effect at the time of sale, as set forth in the Production documentation, specifications and/or accompanying package inserts ("Documentation"). No claim of suitability for use in applications regulated by FDA is made. The warranty provided herein is valid only when used by properly trained individuals. Unless otherwise stated in the Documentation, this warranty is limited to one year from date of shipment when the Product is subjected to normal, proper and intended usage. This warranty does not extend to anyone other than the Buyer. Any model or sample furnished to Buyer is merely illustrative of the general type and quality of goods and does not represent that any Product will conform to such model or sample. NO OTHER WARRANTIES, EXPRESS OR IMPLIED, ARE GRANTED INCLUDING WITHOUT LIMITATION, IMPLIED WARRANTIES OF MERCHANTABILITY, FITNESS FOR ANY PARTICULAR PURPOSE, OR NON INFRINGEMENT. BUYER'S EXCLUSIVE REMEDY FOR NON-CONFORMING PRODUCTS DURING THE WARRANTY PERIOD IS LIMITED TO REPAIR, REPLACEMENT OF OR REFUND FOR THE NON-CONFORMING PRODUCT(S) AT SELLER'S SOLE OPTION. THERE IS NO OBLIGATION TO REPAIR, REPLACE OR REFUND FOR PRODUCTS AS THE RESULT OF (I) ACCIDENT, DISASTER OR EVENT OF FORCE MAJEURE, (II) MISUSE, FAULT OR NEGLIGENCE OF OR BY BUYER, (III) USE OF THE PRODUCTS IN A MANNER FOR WHICH THEY WERE NOT DESIGNED, OR (IV) IMPROPER STORAGE AND HANDLING OF THE PRODUCTS. Unless otherwise expressly stated on the Product or in the documentation accompanying the Product, the Product is intended for research only and is not to be used for any other purpose, including without limitation, unauthorized commercial uses, in vitro diagnostic uses, ex vivo or in vivo therapeutic uses, or any type of consumption by or application to human or animals.