

TRBP Polyclonal Antibody

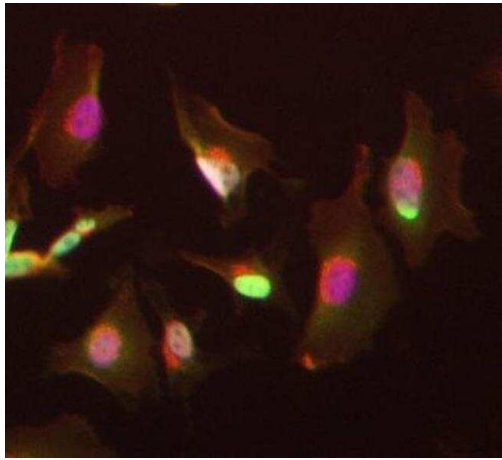
Product Details	
Size	100 µg
Species Reactivity	Human, Rat
Host/Isotype	Rabbit / IgG
Class	Polyclonal
Type	Antibody
Conjugate	Unconjugated
Immunogen	Synthetic peptide conjugated to KLH derived from within residues 200 - 300 of Human TRBP.
Form	Liquid
Concentration	1 mg/mL
Storage conditions	Store at 4°C short term. For long term storage, store at -20°C, avoiding freeze/thaw cycles.
RRID	AB_10983644

Applications	Tested Dilution	Publications
Western Blot (WB)	1 µg/mL	-
Immunocytochemistry (ICC/IF)	1 µg/mL	-
Immunoprecipitation (IP)	Assay-Dependent	-

Product Specific Information

This antibody is predicted to react with mouse and cow based on sequence homology.

Product Images For TRBP Polyclonal Antibody

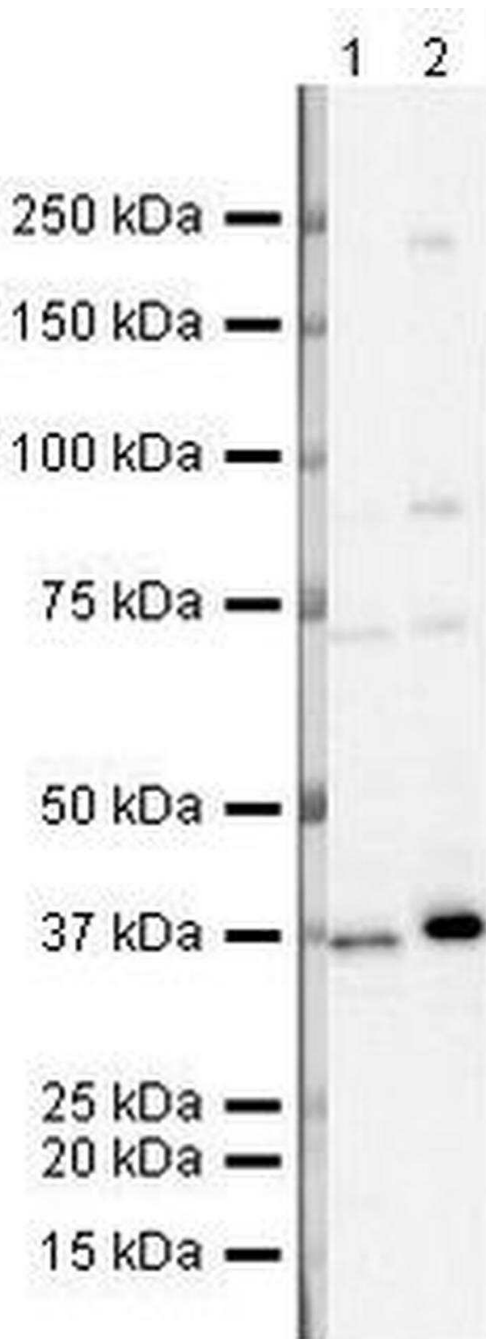


TRBP Antibody (PA5-19716) in ICC/IF

Immunofluorescent staining of HeLa cells using PA5-19716, anti-TRBP antibody. The cells were fixed with PFA (4%) for 10 minutes, permeabilised with BSA(1%), normal goat serum (10%) and glycine (0.3 M) in 0.1% T-BST for 1 hour and exposed to the primary antibody at a concentration of 1 ug/ml overnight at 4C. The secondary antibody was a 448 fluorescence conjugated Goat anti-rabbit IgG (green) at a dilution of 1:1000. A WGA- 594 fluorescent conjugated stain was used to label plasma membranes (red) and the nuclei stain was DAPI (blue).

TRBP Antibody (PA5-19716) in WB

Western blot analysis of A431 Whole Cell Lysate using PA5-19716, TRBP primary antibody at a dilution of 1 ug/ml (lane 1). PA5-19716 staining of MCF7 Whole Cell Lysate at a dilution of 1 ug/ml (lane 2). Blot treated with a secondary HRP-conjugated Goat polyclonal anti-Rabbit antibody was used at a dilution of 1:3000.



For Research Use Only. Not for use in diagnostic procedures. Not for resale without express authorization. Products are warranted to operate or perform substantially in conformance with published Product specifications in effect at the time of sale, as set forth in the Production documentation, specifications and/or accompanying package inserts ("Documentation"). No claim of suitability for use in applications regulated by FDA is made. The warranty provided herein is valid only when used by properly trained individuals. Unless otherwise stated in the Documentation, this warranty is limited to one year from date of shipment when the Product is subjected to normal, proper and intended usage. This warranty does not extend to anyone other than the Buyer. Any model or sample furnished to Buyer is merely illustrative of the general type and quality of goods and does not represent that any Product will conform to such model or sample. NO OTHER WARRANTIES, EXPRESS OR IMPLIED, ARE GRANTED INCLUDING WITHOUT LIMITATION, IMPLIED WARRANTIES OF MERCHANTABILITY, FITNESS FOR ANY PARTICULAR PURPOSE, OR NON INFRINGEMENT. BUYER'S EXCLUSIVE REMEDY FOR NON-CONFORMING PRODUCTS DURING THE WARRANTY PERIOD IS LIMITED TO REPAIR, REPLACEMENT OF OR REFUND FOR THE NON-CONFORMING PRODUCT(S) AT SELLER'S SOLE OPTION. THERE IS NO OBLIGATION TO REPAIR, REPLACE OR REFUND FOR PRODUCTS AS THE RESULT OF (I) ACCIDENT, DISASTER OR EVENT OF FORCE MAJEURE, (II) MISUSE, FAULT OR NEGLIGENCE OF OR BY BUYER, (III) USE OF THE PRODUCTS IN A MANNER FOR WHICH THEY WERE NOT DESIGNED, OR (IV) IMPROPER STORAGE AND HANDLING OF THE PRODUCTS. Unless otherwise expressly stated on the Product or in the documentation accompanying the Product, the Product is intended for research only and is not to be used for any other purpose, including without limitation, unauthorized commercial uses, in vitro diagnostic uses, ex vivo or in vivo therapeutic uses, or any type of consumption by or application to human or animals.