

Bim Polyclonal Antibody

Product Details	
Size	100 µg
Species Reactivity	Human, Mouse
Published Species	Human
Host/Isotype	Rabbit / IgG
Class	Polyclonal
Type	Antibody
Conjugate	Unconjugated
Immunogen	A peptide corresponding to amino acids near the center of human Bim
Form	Liquid
Concentration	1 mg/mL
Purification	Antigen affinity chromatography
Storage buffer	PBS
Contains	0.02% sodium azide
Storage conditions	Maintain refrigerated at 2-8°C for up to 3 months. For long term storage store at -20°C
RRID	AB_11152570

Applications	Tested Dilution	Publications
Western Blot (WB)	5 µg/mL	2 Publications
Immunocytochemistry (ICC/IF)	10 µg/mL	-
Miscellaneous PubMed (Misc)	-	1 Publication

Product Specific Information

A suggested positive control is K562 cell lysate.

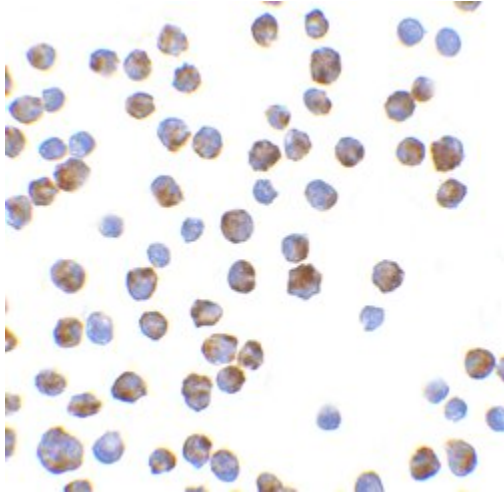
PA5-20089 can be used with blocking peptide PEP-0207.

The PA5-20089 immunogen is located within amino acids 80-130 of BIM.

Predicted molecular ~ 22kD. In Western blot applications, this antibody has been observed to detect a band at: 22kD.

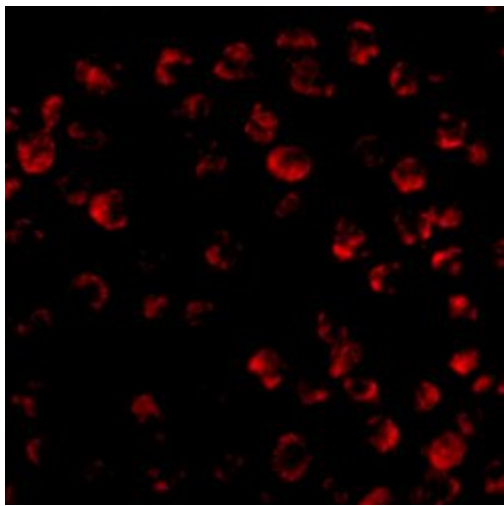
Predicted species reactivity based on immunogen sequence: Rat: (100%).

Product Images For Bim Polyclonal Antibody



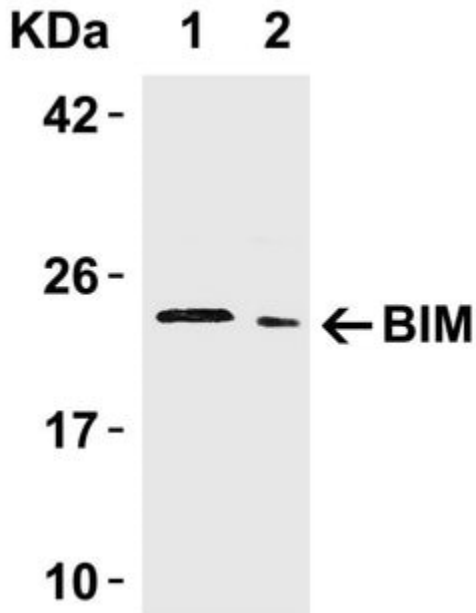
Bim Antibody (PA5-20089) in ICC/IF

Immunocytochemistry of K562 cells using Bim Polyclonal Antibody (Product # PA5-20089) at 10 $\mu\text{g}/\text{mL}$. Cells were fixed with formaldehyde and blocked with 0.1 serum for 1 h at RT; antigen retrieval was by heat mediation with a citrate buffer (pH6). Samples were incubated with primary antibody overnight at 4°C. A goat anti-rabbit IgG H&L (HRP) at 1:250 was used as secondary. Counter stained with Hematoxylin.



Bim Antibody (PA5-20089) in ICC/IF

Immunofluorescent analysis of 4% paraformaldehyde-fixed K562 cells labeling BIM with Bim Polyclonal Antibody (Product # PA5-20089) at 20 $\mu\text{g}/\text{mL}$, followed by goat anti-rabbit IgG secondary antibody at 1:500 dilution (red).



Bim Antibody (PA5-20089) in WB

Western Blot Validation in Human Tissue. Loading: 15 μg of lysates per lane. Antibodies: Bim Polyclonal Antibody (Product # PA5-20089) (5 $\mu\text{g}/\text{mL}$), 1h incubation at RT in 0.05 NFDN/TBST. Secondary: Goat anti-rabbit IgG HRP conjugate at 1:10,000 dilution. Lane 1: Human urinary bladder Lane 2: Human pancreas

3 References

Western Blot (2)

Scientific reports

Oral Pathobiont Activates Anti-Apoptotic Pathway, Promoting both Immune Suppression and Oncogenic Cell Proliferation.

"PA5-20089 was used in Western Blotting to show that the keystone pathogen in Chronic periodontitis Porphyromonas gingivalis, disrupts immune surveillance by generating myeloid-derived dendritic suppressor cells from monocytes."

Authors: Arjunan P, Meghil MM, Pi W, Xu J, Lang L, El-Awady A, Sullivan W, Rajendran M, Rabelo MS, Wang T, Tawfik OK, Kunde-Ramamoorthy G, Singh N, Muthusamy T, Susin C, Teng Y, Arce RM, Cutler CW

Species
Human

Dilution
Not Cited

Year
2018

Scientific reports

Human IDO-competent, long-lived immunoregulatory dendritic cells induced by intracellular pathogen, and their fate in humanized mice.

"Published figure using Bim polyclonal antibody (Product # PA5-20089) in Western Blot"

Authors: Tyagi RK, Miles B, Parmar R, Garg NK, Dalai SK, Baban B, Cutler CW

Species
Not Applicable

Dilution
Not Cited

Year
2017

Miscellaneous PubMed (1)

International journal of pharmaceutics

Nanostructured lipid carrier mediates effective delivery of methotrexate to induce apoptosis of rheumatoid arthritis via NF-B and FOXO1.

"PA5-20089 was used in western blot to develop novel nano-structured lipid carriers for the transdermal delivery of methotrexate"

Authors: Garg NK, Tyagi RK, Singh B, Sharma G, Nirbhavane P, Kushwah V, Jain S, Katare OP

Species
Human

Dilution
Not Cited

Year
2016

For Research Use Only. Not for use in diagnostic procedures. Not for resale without express authorization. Products are warranted to operate or perform substantially in conformance with published Product specifications in effect at the time of sale, as set forth in the Production documentation, specifications and/or accompanying package inserts ("Documentation"). No claim of suitability for use in applications regulated by FDA is made. The warranty provided herein is valid only when used by properly trained individuals. Unless otherwise stated in the Documentation, this warranty is limited to one year from date of shipment when the Product is subjected to normal, proper and intended usage. This warranty does not extend to anyone other than the Buyer. Any model or sample furnished to Buyer is merely illustrative of the general type and quality of goods and does not represent that any Product will conform to such model or sample. NO OTHER WARRANTIES, EXPRESS OR IMPLIED, ARE GRANTED INCLUDING WITHOUT LIMITATION, IMPLIED WARRANTIES OF MERCHANTABILITY, FITNESS FOR ANY PARTICULAR PURPOSE, OR NON INFRINGEMENT. BUYER'S EXCLUSIVE REMEDY FOR NON-CONFORMING PRODUCTS DURING THE WARRANTY PERIOD IS LIMITED TO REPAIR, REPLACEMENT OF OR REFUND FOR THE NON-CONFORMING PRODUCT(S) AT SELLER'S SOLE OPTION. THERE IS NO OBLIGATION TO REPAIR, REPLACE OR REFUND FOR PRODUCTS AS THE RESULT OF (I) ACCIDENT, DISASTER OR EVENT OF FORCE MAJEURE, (II) MISUSE, FAULT OR NEGLIGENCE OF OR BY BUYER, (III) USE OF THE PRODUCTS IN A MANNER FOR WHICH THEY WERE NOT DESIGNED, OR (IV) IMPROPER STORAGE AND HANDLING OF THE PRODUCTS. Unless otherwise expressly stated on the Product or in the documentation accompanying the Product, the Product is intended for research only and is not to be used for any other purpose, including without limitation, unauthorized commercial uses, in vitro diagnostic uses, ex vivo or in vivo therapeutic uses, or any type of consumption by or application to human or animals.