

STIM2 Polyclonal Antibody

Product Details	
Size	100 µg
Species Reactivity	Human, Mouse, Rat
Published Species	Human
Host/Isotype	Rabbit / IgG
Class	Polyclonal
Type	Antibody
Conjugate	Unconjugated
Immunogen	An 18 amino acid peptide from near the carboxy terminus of human STIM2.
Form	Liquid
Concentration	1 mg/mL
Purification	Antigen affinity chromatography
Storage buffer	PBS
Contains	0.02% sodium azide
Storage conditions	4° C
RRID	AB_11153417

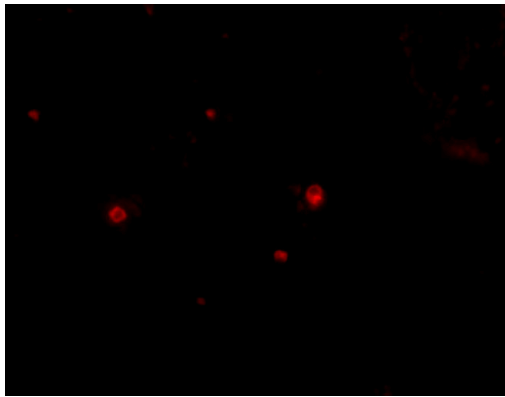
Applications	Tested Dilution	Publications
Western Blot (WB)	0.5-1 µg/mL	1 Publication
Immunohistochemistry (IHC)	2.5 µg/mL	-

Product Specific Information

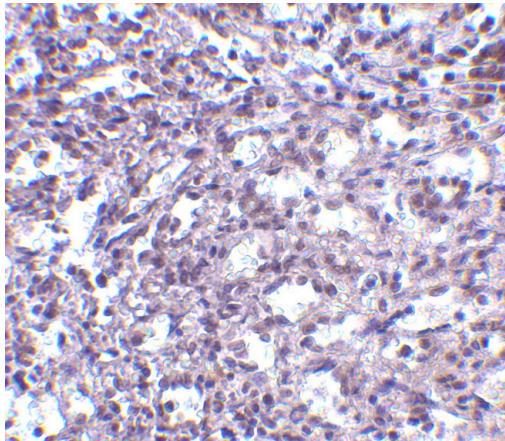
A suggested positive control is A-20 cell lysate.

PA5-20372 can be used with blocking peptide PEP-0489.

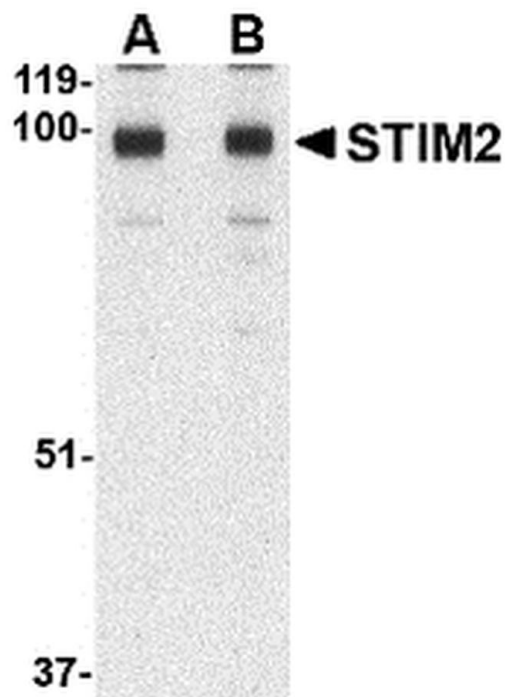
Product Images For STIM2 Polyclonal Antibody



STIM2 Antibody (PA5-20372) in ICC/IF
Immunofluorescence of STIM2 in Human Spleen cells with STIM2 Polyclonal Antibody (Product # PA5-20372) at 20 µg/mL.



STIM2 Antibody (PA5-20372) in IHC
Immunohistochemistry of STIM2 in human spleen tissue with STIM2 Polyclonal Antibody (Product # PA5-20372) at 2.5 µg/mL.



STIM2 Antibody (PA5-20372) in WB
Western Blot analysis of STIM2 in A-20 cell lysate with STIM2 Polyclonal Antibody (Product # PA5-20372) at (A) 0.5 and (B) 1 µg/mL.

View more figures on thermofisher.com

Western Blot (1)

Cancers	Year 2021
Furin Prodomain ppFurin Enhances Ca²⁺ Entry Through Orai and TRPC6 Channels' Activation in Breast Cancer Cells.	Species Human
"Published figure using STIM2 polyclonal antibody (Product # PA5-20372) in Western Blot"	Dilution 1:500
Authors: López JJ,Siegfried G,Cantonero C,Soulet F,Descarpentrie J,Smani T,Badiola I,Pernot S,Evrard S,Rosado JA,Khatib AM	

For Research Use Only. Not for use in diagnostic procedures. Not for resale without express authorization. Products are warranted to operate or perform substantially in conformance with published Product specifications in effect at the time of sale, as set forth in the Production documentation, specifications and/or accompanying package inserts ("Documentation"). No claim of suitability for use in applications regulated by FDA is made. The warranty provided herein is valid only when used by properly trained individuals. Unless otherwise stated in the Documentation, this warranty is limited to one year from date of shipment when the Product is subjected to normal, proper and intended usage. This warranty does not extend to anyone other than the Buyer. Any model or sample furnished to Buyer is merely illustrative of the general type and quality of goods and does not represent that any Product will conform to such model or sample. NO OTHER WARRANTIES, EXPRESS OR IMPLIED, ARE GRANTED INCLUDING WITHOUT LIMITATION, IMPLIED WARRANTIES OF MERCHANTABILITY, FITNESS FOR ANY PARTICULAR PURPOSE, OR NON-INFRINGEMENT. BUYER'S EXCLUSIVE REMEDY FOR NON-CONFORMING PRODUCTS DURING THE WARRANTY PERIOD IS LIMITED TO REPAIR, REPLACEMENT OF OR REFUND FOR THE NON-CONFORMING PRODUCT(S) AT SELLER'S SOLE OPTION. THERE IS NO OBLIGATION TO REPAIR, REPLACE OR REFUND FOR PRODUCTS AS THE RESULT OF (I) ACCIDENT, DISASTER OR EVENT OF FORCE MAJEURE, (II) MISUSE, FAULT OR NEGLIGENCE OF OR BY BUYER, (III) USE OF THE PRODUCTS IN A MANNER FOR WHICH THEY WERE NOT DESIGNED, OR (IV) IMPROPER STORAGE AND HANDLING OF THE PRODUCTS. Unless otherwise expressly stated on the Product or in the documentation accompanying the Product, the Product is intended for research only and is not to be used for any other purpose, including without limitation, unauthorized commercial uses, in vitro diagnostic uses, ex vivo or in vivo therapeutic uses, or any type of consumption by or application to human or animals.