

LDLR Polyclonal Antibody

Product Details	
Size	100 µg
Species Reactivity	Human, Mouse, Rat
Host/Isotype	Chicken / IgY
Class	Polyclonal
Type	Antibody
Conjugate	Unconjugated
Immunogen	An 18 amino acid peptide near the center of human LDL-R.
Form	Liquid
Concentration	1 mg/mL
Purification	Antigen affinity chromatography
Storage buffer	PBS
Contains	0.02% sodium azide
Storage conditions	Maintain refrigerated at 2-8°C for up to 3 months. For long term storage store at -20°C
RRID	AB_11152335

Applications	Tested Dilution	Publications
Western Blot (WB)	1-2 µg/mL	-
Immunohistochemistry (IHC)	2.5 µg/mL	-

Product Specific Information

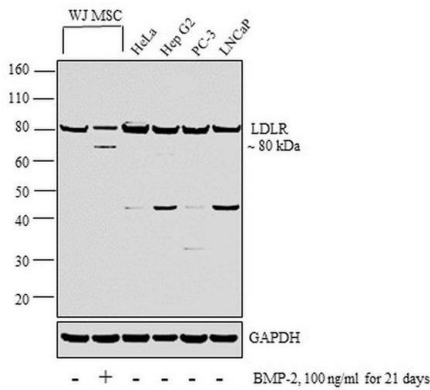
A suggested positive control is human liver tissue lysate.

PA5-20752 can be used with blocking peptide PEP-0866.

Product Images For LDLR Polyclonal Antibody

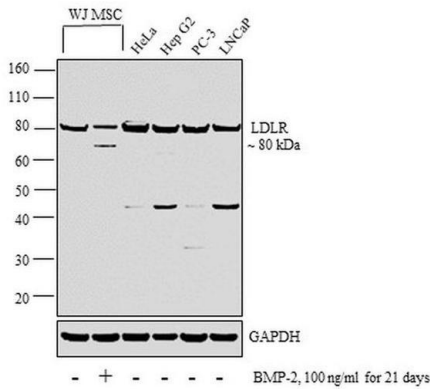
LDLR Antibody (PA5-20752) in WB

Western blot analysis was performed on whole cell extracts (30 µg lysate) of WJ MSC (Lane 1), WJ MSC treated with BMP-2 (100ng/ml for 21 days) (Lane 2), HeLa (Lane 3), Hep G2 (Lane 4), PC-3 (Lane 5) and LNCaP (Lane 6). The blot was probed with Anti-LDLR Antibody (35H2L48) (Product # PA5-20752, 1 µg/ml) and detected by chemiluminescence using Goat anti-Chicken IgY (H+L), HRP, Polyclonal, Secondary Antibody, Invitrogen™, (Product # A16054, 0.25 µg/ml, 1: 4000 dilution). A 80 kDa band corresponding to LDLR was observed in the cell line tested and decreased upon BMP treatment in WJ MSC cell line. A non-specific 40 kDa band was observed in the cell lines tested.



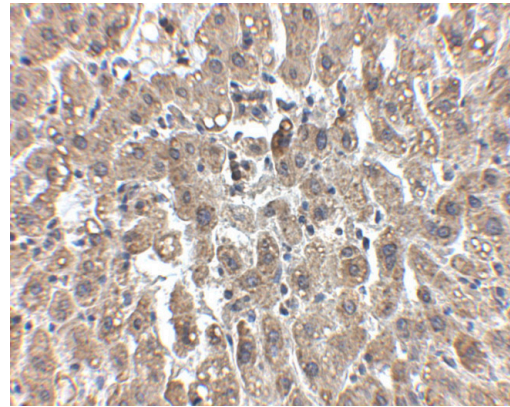
LDLR Antibody (PA5-20752)

Altered expression of target protein upon cell treatment demonstrates antibody specificity. Western blot analysis of LDLR using with LDLR Polyclonal Antibody (Product # PA5-20752) shows a decrease upon BMP-2 treatment. {TM}



LDLR Antibody (PA5-20752) in IHC

Immunohistochemistry of LDL-R in human liver tissue with LDLR Polyclonal Antibody (Product # PA5-20752) at 2.5 µg/mL.



View more figures on thermofisher.com

For Research Use Only. Not for use in diagnostic procedures. Not for resale without express authorization. Products are warranted to operate or perform substantially in conformance with published Product specifications in effect at the time of sale, as set forth in the Production documentation, specifications and/or accompanying package inserts ("Documentation"). No claim of suitability for use in applications regulated by FDA is made. The warranty provided herein is valid only when used by properly trained individuals. Unless otherwise stated in the Documentation, this warranty is limited to one year from date of shipment when the Product is subjected to normal, proper and intended usage. This warranty does not extend to anyone other than the Buyer. Any model or sample furnished to Buyer is merely illustrative of the general type and quality of goods and does not represent that any Product will conform to such model or sample. NO OTHER WARRANTIES, EXPRESS OR IMPLIED, ARE GRANTED INCLUDING WITHOUT LIMITATION, IMPLIED WARRANTIES OF MERCHANTABILITY, FITNESS FOR ANY PARTICULAR PURPOSE, OR NON INFRINGEMENT. BUYER'S EXCLUSIVE REMEDY FOR NON-CONFORMING PRODUCTS DURING THE WARRANTY PERIOD IS LIMITED TO REPAIR, REPLACEMENT OF OR REFUND FOR THE NON-CONFORMING PRODUCT(S) AT SELLER'S SOLE OPTION. THERE IS NO OBLIGATION TO REPAIR, REPLACE OR REFUND FOR PRODUCTS AS THE RESULT OF (I) ACCIDENT, DISASTER OR EVENT OF FORCE MAJEURE, (II) MISUSE, FAULT OR NEGLIGENCE OF OR BY BUYER, (III) USE OF THE PRODUCTS IN A MANNER FOR WHICH THEY WERE NOT DESIGNED, OR (IV) IMPROPER STORAGE AND HANDLING OF THE PRODUCTS. Unless otherwise expressly stated on the Product or in the documentation accompanying the Product, the Product is intended for research only and is not to be used for any other purpose, including without limitation, unauthorized commercial uses, in vitro diagnostic uses, ex vivo or in vivo therapeutic uses, or any type of consumption by or application to human or animals.