

Cdc42 Polyclonal Antibody

Product Details	
Size	100 µg
Species	Human, Mouse, Rat
Expression System	Chicken / IgY
Class	Polyclonal
Type	Antibody
Conjugate	Unconjugated
Immunogen	A 17 amino acid peptide near the amino terminus of human CDC42.
Form	Liquid
Concentration	1 mg/mL
Purification	Antigen affinity chromatography
Storage buffer	PBS
Contains	0.02% sodium azide
Storage Conditions	Maintain refrigerated at 2-8°C for up to 3 months. For long term storage store at -20°C
RRID	AB_11153253

Applications	Tested Dilution	Publications
Immunocytochemistry (ICC)	5 µg/mL	-
Immunofluorescence (IF)	5 µg/mL	-
Western Blot (WB)	0.5-1 µg/mL	-

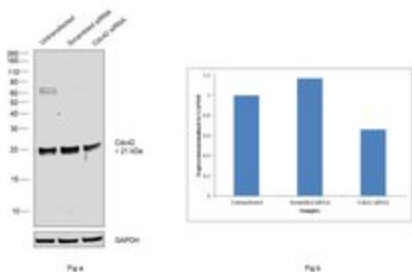
Product Specific Information

A suggested positive control is human brain tissue lysate.

PA5-20764 can be used with blocking peptide PEP-0878.

Cdc42 Antibody (PA5-20764)

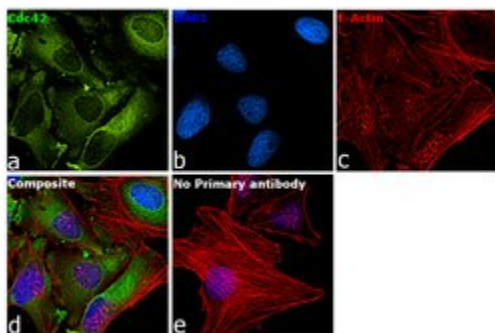
Antibody specificity was demonstrated by siRNA mediated KD of target protein. A-431 cells were transfected with Cdc42 siRNA and reduction of signal was observed in Western Blot using Cdc42 Polyclonal Antibody (Product # PA5-20764).. Knockdown validation info.



Product Images For Cdc42 Polyclonal Antibody

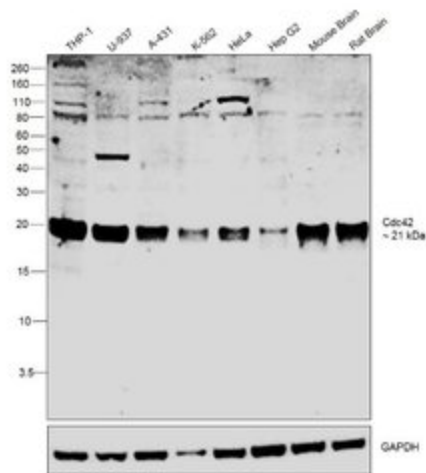
Cdc42 Antibody (PA5-20764) in IF

Immunofluorescence analysis of cdc42 was performed using 70% confluent log phase HeLa cells. The cells were fixed with 4% paraformaldehyde for 10 minutes, permeabilized with 0.1% Triton™ X-100 for 15 minutes, and blocked with 2% BSA for 1 hour at room temperature. The cells were labeled with Cdc42 Polyclonal Antibody (Product # PA5-20764) at 5 microgram/mL in 0.1% BSA, incubated at 4 degree Celsius overnight and then labeled with Goat anti-Chicken IgY (H+L) Secondary Antibody, Alexa Fluor 488 (Product # A-11039) at a dilution of 1:2000 for 45 minutes at room temperature (Panel a: green). Nuclei (Panel b: blue) were stained with ProLong™ Diamond Antifade Mountant with DAPI (Product # P36962). F-actin (Panel c: red) was stained with Rhodamine Phalloidin (Product # R415, 1: 300). Panel d represents the merged image showing cytoskeletal and cytoplasmic localization. Panel e represents cells with no primary antibody to assess background. The images were captured at 60X magnification.



Cdc42 Antibody (PA5-20764) in WB

Western blot was performed using Anti-Cdc42 Polyclonal Antibody (Product # PA5-20764) and 21 kDa band corresponding to Cdc42 was observed across cell lines and tissues tested along with certain uncharacterized bands at ~ 80 kDa. Whole cell extracts (30 µg lysate) of THP-1 (Lane 1), U-937 (Lane 2), A-431 (Lane 3), K-562 (Lane 4), HeLa (Lane 5), Hep G2 (Lane 6), tissue extracts of Mouse Brain (Lane 7) and Rat Brain (Lane 8) were electrophoresed using NuPAGE™ 12% Bis-Tris Protein Gel (Product # NP0342BOX). Resolved proteins were then transferred onto a nitrocellulose membrane (Product # IB23001) by iBlot® 2 Dry Blotting System (Product # IB21001). The blot was probed with the primary antibody (0.5µg/mL) and detected by chemiluminescence Goat anti-Chicken IgY (H+L) Secondary Antibody, HRP (Product # A16054, 1:4000 dilution) using the iBright FL 1000 (Product # A32752). Chemiluminescent detection was performed using Novex® ECL Chemiluminescent Substrate Reagent Kit (Product # WP20005).



View more figures on thermofisher.com

For Research Use Only. Not for use in diagnostic procedures. Not for resale without express authorization. Products are warranted to operate or perform substantially in conformance with published Product specifications in effect at the time of sale, as set forth in the Production documentation, specifications and/or accompanying package inserts ("Documentation"). No claim of suitability for use in applications regulated by FDA is made. The warranty provided herein is valid only when used by properly trained individuals. Unless otherwise stated in the Documentation, this warranty is limited to one year from date of shipment when the Product is subjected to normal, proper and intended usage. This warranty does not extend to anyone other than the Buyer. Any model or sample furnished to Buyer is merely illustrative of the general type and quality of goods and does not represent that any Product will conform to such model or sample. NO OTHER WARRANTIES, EXPRESS OR IMPLIED, ARE GRANTED INCLUDING WITHOUT LIMITATION, IMPLIED WARRANTIES OF MERCHANTABILITY, FITNESS FOR ANY PARTICULAR PURPOSE, OR NON INFRINGEMENT. BUYER'S EXCLUSIVE REMEDY FOR NON-CONFORMING PRODUCTS DURING THE WARRANTY PERIOD IS LIMITED TO REPAIR, REPLACEMENT OF OR REFUND FOR THE NON-CONFORMING PRODUCT(S) AT SELLER'S SOLE OPTION. THERE IS NO OBLIGATION TO REPAIR, REPLACE OR REFUND FOR PRODUCTS AS THE RESULT OF (I) ACCIDENT, DISASTER OR EVENT OF FORCE MAJEURE, (II) MISUSE, FAULT OR NEGLIGENCE OF OR BY BUYER, (III) USE OF THE PRODUCTS IN A MANNER FOR WHICH THEY WERE NOT DESIGNED, OR (IV) IMPROPER STORAGE AND HANDLING OF THE PRODUCTS. Unless otherwise expressly stated on the Product or in the documentation accompanying the Product, the Product is intended for research only and is not to be used for any other purpose, including without limitation, unauthorized commercial uses, in vitro diagnostic uses, ex vivo or in vivo therapeutic uses, or any type of consumption by or application to human or animals.