

# SPTLC2 Polyclonal Antibody

Product Details	
Size	100 µg
Species Reactivity	Human, Mouse
Published Species	Human
Host/Isotype	Rabbit / IgG
Class	Polyclonal
Type	Antibody
Conjugate	Unconjugated
Immunogen	A 15 amino acid peptide near the carboxy terminus of human SPT2.
Form	Liquid
Concentration	1 mg/mL
Purification	Antigen affinity chromatography
Storage buffer	PBS
Contains	0.02% sodium azide
Storage conditions	Maintain refrigerated at 2-8°C for up to 3 months. For long term storage store at -20°C
RRID	AB_11154528

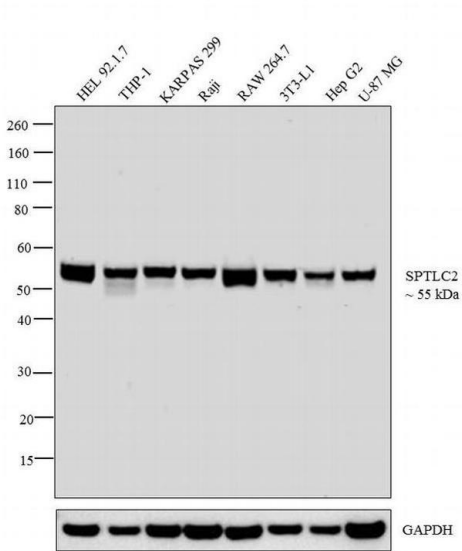
Applications	Tested Dilution	Publications
Western Blot (WB)	1 µg/mL	1 Publication
Immunocytochemistry (ICC/IF)	10 µg/mL	-

## Product Specific Information

A suggested positive control is NIH-3T3 cell lysate.

PA5-21142 can be used with blocking peptide PEP-1256.

Product Images For SPTLC2 Polyclonal Antibody

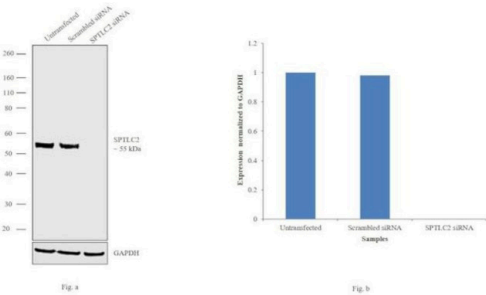


SPTLC2 Antibody (PA5-21142) in WB

Western blot analysis was performed on whole cell extracts (30 µg lysate) of HEL 92.1.7 (Lane 1), THP-1 (Lane 2), KARPAS 299 (Lane 3), Raji (Lane 4), RAW 264.7 (Lane 5), 3T3-L1 (Lane 6), Hep G2 (Lane 7) and U-87 MG (Lane 8). The blot was probed with Anti-SPTLC2 Polyclonal Antibody (Product # PA5-21142, 1 µg/mL) and detected by chemiluminescence using Goat anti-Rabbit IgG (Heavy Chain) Superclonal™ Secondary Antibody, HRP conjugate (Product # A27036, 0.25 µg/mL, 1:4,000 dilution). A 55 kDa band corresponding to SPTLC2 was observed across the cell lines tested.

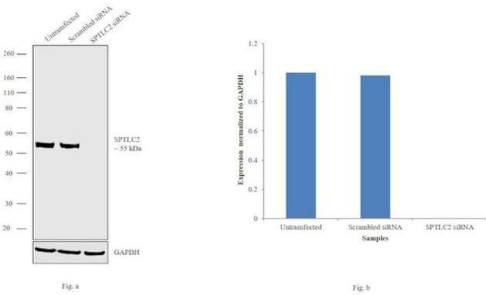
SPTLC2 Antibody (PA5-21142)

Antibody specificity was demonstrated by siRNA mediated knockdown of target protein. U-87 MG cells were transfected with SPTLC2 siRNA and reduction of signal was observed in Western Blot using SPTLC2 Polyclonal Antibody (Product # PA5-21142). {KD}



SPTLC2 Antibody (PA5-21142) in WB

Knockdown of SPTLC2 was achieved by transfecting U-87 MG cells with SPTLC2 specific siRNAs (Silencer® select Product # s225153). Western blot analysis (Fig. a) was performed using membrane enriched extracts from the SPTLC2 knockdown cells (lane 3), non-specific scrambled siRNA transfected cells (lane 2) and untransfected cells (lane 1). The blot was probed with SPTLC2 Polyclonal Antibody (Product # PA5-21142, 1:1,000 dilution) and Goat anti-Rabbit IgG (Heavy Chain) Superclonal™ Secondary Antibody, HRP conjugate (Product # A27036, 0.25 µg/mL, 1:4,000 dilution). Densitometric analysis of this western blot is shown in histogram (Fig. b). Decrease in signal upon siRNA mediated knock down confirms that antibody is specific to SPTLC2.



View more figures on [thermofisher.com](https://thermofisher.com)

Western Blot (1)

JCI insight

Increased de novo ceramide synthesis and accumulation in failing myocardium.

"PA5-21142 was used in Western Blot to conclude that increased de novo ceramide synthesis contributes to progressive pathologic cardiac remodeling and dysfunction."

Authors: Ji R,Akashi H,Drosatos K,Liao X,Jiang H,Kennel PJ,Brunjes DL,Castillero E,Zhang X,Deng LY,Homma S, George IJ,Takayama H,Naka Y,Goldberg IJ,Schulze PC

Year  
2017

Species  
Human

For Research Use Only. Not for use in diagnostic procedures. Not for resale without express authorization. Products are warranted to operate or perform substantially in conformance with published Product specifications in effect at the time of sale, as set forth in the Production documentation, specifications and/or accompanying package inserts ("Documentation"). No claim of suitability for use in applications regulated by FDA is made. The warranty provided herein is valid only when used by properly trained individuals. Unless otherwise stated in the Documentation, this warranty is limited to one year from date of shipment when the Product is subjected to normal, proper and intended usage. This warranty does not extend to anyone other than the Buyer. Any model or sample furnished to Buyer is merely illustrative of the general type and quality of goods and does not represent that any Product will conform to such model or sample. NO OTHER WARRANTIES, EXPRESS OR IMPLIED, ARE GRANTED INCLUDING WITHOUT LIMITATION, IMPLIED WARRANTIES OF MERCHANTABILITY, FITNESS FOR ANY PARTICULAR PURPOSE, OR NON INFRINGEMENT. BUYER'S EXCLUSIVE REMEDY FOR NON-CONFORMING PRODUCTS DURING THE WARRANTY PERIOD IS LIMITED TO REPAIR, REPLACEMENT OF OR REFUND FOR THE NON-CONFORMING PRODUCT(S) AT SELLER'S SOLE OPTION. THERE IS NO OBLIGATION TO REPAIR, REPLACE OR REFUND FOR PRODUCTS AS THE RESULT OF (i) ACCIDENT, DISASTER OR EVENT OF FORCE MAJEURE, (ii) MISUSE, FAULT OR NEGLIGENCE OF OR BY BUYER, (iii) USE OF THE PRODUCTS IN A MANNER FOR WHICH THEY WERE NOT DESIGNED, OR (iv) IMPROPER STORAGE AND HANDLING OF THE PRODUCTS. Unless otherwise expressly stated on the Product or in the documentation accompanying the Product, the Product is intended for research only and is not to be used for any other purpose, including without limitation, unauthorized commercial uses, in vitro diagnostic uses, ex vivo or in vivo therapeutic uses, or any type of consumption by or application to human or animals.