

Complement C3 Polyclonal Antibody

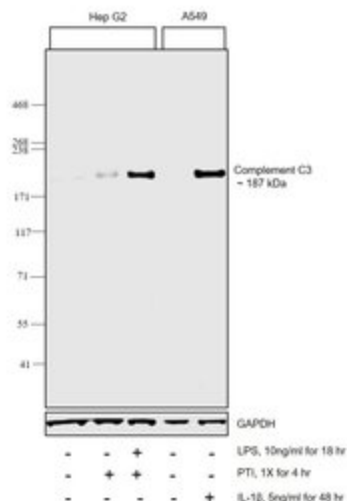
Product Details	
Size	100 µL
Species Reactivity	Human, Mouse
Published Species	Human, Mouse
Host/Isotype	Rabbit / IgG
Class	Polyclonal
Type	Antibody
Conjugate	Unconjugated
Immunogen	Recombinant protein encompassing a sequence within the C-terminal region of human C3 (aa 1448-1655)
Form	Liquid
Concentration	0.08 mg/mL
Purification	Antigen affinity chromatography
Storage buffer	PBS, pH 7, with 20% glycerol, 1% BSA
Contains	0.025% ProClin 300
Storage conditions	Store at 4°C short term. For long term storage, store at -20°C, avoiding freeze/thaw cycles.
RRID	AB_11153785

Applications	Tested Dilution	Publications
Western Blot (WB)	1:500-1:3,000	4 Publications
Immunohistochemistry (IHC)	-	1 Publication
Immunohistochemistry (Paraffin) (IHC (P))	1:100-1:1,000	-
Immunocytochemistry (ICC/IF)	1:100-1:1,000	1 Publication
Flow Cytometry (Flow)	-	1 Publication
Immunoprecipitation (IP)	1:100-1:500	-

Product Specific Information

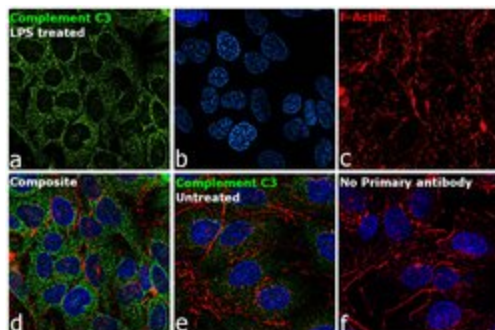
Recommended positive controls: Huh7, HepG2.

Store product as a concentrated solution. Centrifuge briefly prior to opening the vial.



Complement C3 Antibody (PA5-21349)

Altered expression of proteins upon cell treatment demonstrates antibody specificity. Western blot using Complement C3 Polyclonal Antibody (Product # PA5-21349), shows increased expression of Complement C3 in Hep G2 with LPS treatment and in A549 with IL-1 β treatment. Cell treatment validation info.



Complement C3 Antibody (PA5-21349)

Detection of altered subcellular localization of the target protein by cell treatment demonstrates antibody specificity. Immunofluorescence analysis using Complement C3 Polyclonal Antibody (Product # PA5-21349), shows increased expression of protein in Hep G2 cell line upon treatment with LPS. Cell treatment validation info.

Product Images For Complement C3 Polyclonal Antibody

Complement C3 Antibody (PA5-21349) in ICC/IF

Immunofluorescence analysis of Complement C3 was performed using 70% confluent log phase Hep G2 cells treated with 10 ng/mL of LPS for 18 hours. The cells were fixed with 4% paraformaldehyde for 10 minutes, permeabilized with 0.1% Triton™ X-100 for 15 minutes, and blocked with 2% BSA for 45 minutes at room temperature. The cells were labeled with Complement C3 Polyclonal Antibody (Product # PA5-21349) at 5 μ g/mL in 0.1% BSA, incubated at 4 degree celsius overnight and then labeled with Donkey anti-Rabbit IgG (H+L) Highly Cross-Adsorbed Secondary Antibody, Alexa Fluor Plus 488 (Product # A32790), (1:2000), for 45 minutes at room temperature (Panel a: Green). Nuclei (Panel b: Blue) were stained with ProLong™ Diamond Antifade Mountant with DAPI (Product # P36962). F-actin (Panel c: Red) was stained with Rhodamine Phalloidin (Product # R415, 1:300). Panel d represents the merged image showing cytoplasmic localization. Panel e represents untreated cells with weak cytoplasmic signal. Panel f represents control cells with no primary antibody to assess background. The images were captured at 60X magnification.

View more figures on thermofisher.com

Western Blot (4)

Frontiers in immunology

***Bacillus anthracis* Poly--D-Glutamate Capsule Inhibits Opsonic Phagocytosis by Impeding Complement Activation.**

"PA5-21349 was used in Western Blotting to demonstrate the mechanism through which the B. anthracis capsule imparts a survival advantage to the active bacteria."

Authors: Sharma S,Bhatnagar R,Gaur D

Species
Human

Dilution
Not Cited

Year
2021

Biology

Complement in Reproductive White Adipose Tissue Characterizes the Obese Preeclamptic-Like BPH/5 Mouse Prior to and During Pregnancy.

"PA5-21349 was used in Western Blotting to explore potential contribution of inflammatory mediators in visceral white adipose tissue (WAT) to Preeclampsia."

Authors: Olson KN,Reijnders D,Gomes VCL,Hebert RC,Liu CC,Stephens JM,Redman LM,Douglas NC,Sones JL

Species
Mouse
Not Applicable

Dilution
1:2500
Not Cited

Year
2020

[View more WB references on thermofisher.com](#)

Immunohistochemistry (1)

Journal of neuroinflammation

A1 reactive astrocytes and a loss of TREM2 are associated with an early stage of pathology in a mouse model of cerebral amyloid angiopathy.

"PA5-21349 was used in Immunocytochemistry-immunofluorescence to demonstrate that initial glial response associated with early-stage CAA is characterized by the upregulation of A1 astrocytes without significant microglial reactivity."

Authors: Taylor X,Cisternas P,You Y,You Y,Xiang S,Marambio Y,Zhang J,Vidal R,Lasagna-Reeves CA

Species
Mouse
Not Applicable

Dilution
1:100
Not Cited

Year
2020

Immunocytochemistry (1)

Journal of neuroinflammation

A1 reactive astrocytes and a loss of TREM2 are associated with an early stage of pathology in a mouse model of cerebral amyloid angiopathy.

"PA5-21349 was used in Immunocytochemistry-immunofluorescence to demonstrate that initial glial response associated with early-stage CAA is characterized by the upregulation of A1 astrocytes without significant microglial reactivity."

Authors: Taylor X,Cisternas P,You Y,You Y,Xiang S,Marambio Y,Zhang J,Vidal R,Lasagna-Reeves CA

Species
Mouse
Not Applicable

Dilution
1:100
Not Cited

Year
2020

More applications with references on thermofisher.com

Flow (1)

For Research Use Only. Not for use in diagnostic procedures. Not for resale without express authorization. Products are warranted to operate or perform substantially in conformance with published Product specifications in effect at the time of sale, as set forth in the Production documentation, specifications and/or accompanying package inserts ("Documentation"). No claim of suitability for use in applications regulated by FDA is made. The warranty provided herein is valid only when used by properly trained individuals. Unless otherwise stated in the Documentation, this warranty is limited to one year from date of shipment when the Product is subjected to normal, proper and intended usage. This warranty does not extend to anyone other than the Buyer. Any model or sample furnished to Buyer is merely illustrative of the general type and quality of goods and does not represent that any Product will conform to such model or sample. NO OTHER WARRANTIES, EXPRESS OR IMPLIED, ARE GRANTED INCLUDING WITHOUT LIMITATION, IMPLIED WARRANTIES OF MERCHANTABILITY, FITNESS FOR ANY PARTICULAR PURPOSE, OR NON INFRINGEMENT. BUYER'S EXCLUSIVE REMEDY FOR NON-CONFORMING PRODUCTS DURING THE WARRANTY PERIOD IS LIMITED TO REPAIR, REPLACEMENT OF OR REFUND FOR THE NON-CONFORMING PRODUCT(S) AT SELLER'S SOLE OPTION. THERE IS NO OBLIGATION TO REPAIR, REPLACE OR REFUND FOR PRODUCTS AS THE RESULT OF (I) ACCIDENT, DISASTER OR EVENT OF FORCE MAJEURE, (II) MISUSE, FAULT OR NEGLIGENCE OF OR BY BUYER, (III) USE OF THE PRODUCTS IN A MANNER FOR WHICH THEY WERE NOT DESIGNED, OR (IV) IMPROPER STORAGE AND HANDLING OF THE PRODUCTS. Unless otherwise expressly stated on the Product or in the documentation accompanying the Product, the Product is intended for research only and is not to be used for any other purpose, including without limitation, unauthorized commercial uses, in vitro diagnostic uses, ex vivo or in vivo therapeutic uses, or any type of consumption by or application to human or animals.