

beta-1 Adaptin Polyclonal Antibody

Product Details	
Size	100 µL
Species Reactivity	Human, Mouse, Rat
Host/Isotype	Rabbit / IgG
Class	Polyclonal
Type	Antibody
Conjugate	Unconjugated
Immunogen	Recombinant fragment corresponding to a region within amino acids 384 and 609 of beta-Adaptin (Uniprot ID#Q10567)
Form	Liquid
Concentration	0.55 mg/mL
Purification	Antigen affinity chromatography
Storage buffer	0.1M tris glycine, pH 7, with 10% glycerol
Contains	0.01% thimerosal
Storage conditions	Store at 4°C short term. For long term storage, store at -20°C, avoiding freeze/thaw cycles.
RRID	AB_11151934

Applications	Tested Dilution	Publications
Western Blot (WB)	1:500-1:3,000	-

Product Specific Information

Recommended positive controls: 293T, A431, H1299, HeLaS3, HepG2, Molt-4, Raji, NIH-3T3.

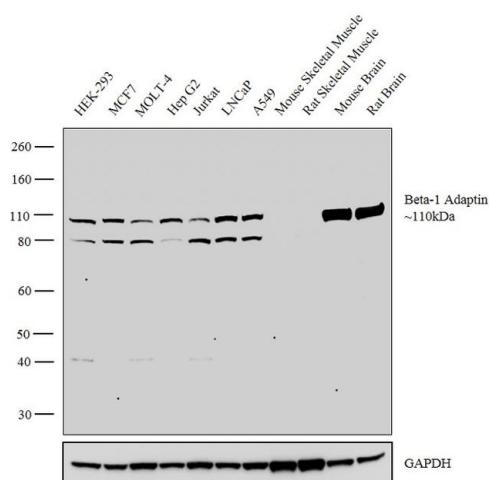
Predicted reactivity: Mouse (99%), Rat (98%), Zebrafish (99%), Xenopus laevis (99%), Bovine (100%).

Store product as a concentrated solution. Centrifuge briefly prior to opening the vial.

Product Images For beta-1 Adaptin Polyclonal Antibody

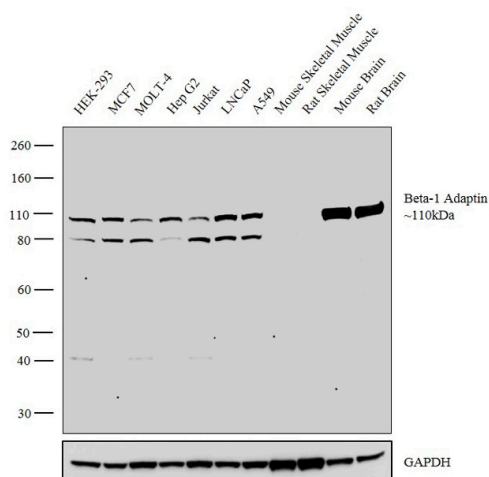
beta-1 Adaptin Antibody (PA5-21381) in WB

Western blot analysis was performed on whole cell extracts (30 µg lysate) of HEK-293 (Lane 1), MCF7 (Lane 2), MOLT-4 (Lane 3), Hep G2 (Lane 4), Jurkat (Lane 5), LNCaP (Lane 6), A549 (Lane 7), Mouse Skeletal Muscle (Lane 8), Rat Skeletal Muscle (Lane 9), Mouse Brain (Lane 10) and Rat Brain (Lane 11). The blot was probed with Anti-beta-1 Adaptin Polyclonal Antibody (Product # PA5-21381, 1:500 dilution) and detected by chemiluminescence Goat anti-Rabbit IgG (Heavy Chain) Superclonal™ Secondary Antibody, HRP conjugate (Product # A27036, 0.25 µg/mL, 1:4000 dilution). A 110kDa band corresponding to beta-1 Adaptin was observed across all the cell lines and tissue lysates tested except Mouse Skeletal Muscle and Rat Skeletal Muscle which are reported negative for beta-1 Adaptin expression. An uncharacterized band was also observed at ~80kDa in all the cell lines.



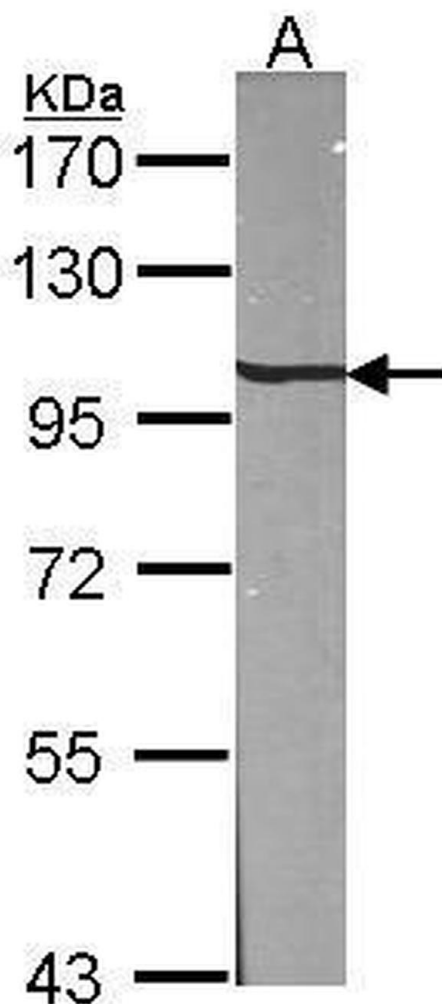
beta-1 Adaptin Antibody (PA5-21381)

Antibody specificity was demonstrated by detection of differential basal expression of the target across tissues owing to their inherent genetic constitution. Relative expression of beta-1 Adaptin was observed in Mouse Brain and Rat Brain in comparison to Mouse Skeletal Muscle and Rat Skeletal Muscle using beta-1 Adaptin Polyclonal Antibody (Product # PA5-21381) in western blot. {RE}



beta-1 Adaptin Antibody (PA5-21381) in WB

Western Blot using beta-1 Adaptin Polyclonal Antibody (Product # PA5-21381). Sample (30 µg of whole cell lysate). A: NIH-3T3. 7.5% SDS PAGE. Beta-1 Adaptin Polyclonal Antibody (Product # PA5-21381) diluted at 1:1,000.



[View more figures on thermofisher.com](https://thermofisher.com)

For Research Use Only. Not for use in diagnostic procedures. Not for resale without express authorization. Products are warranted to operate or perform substantially in conformance with published Product specifications in effect at the time of sale, as set forth in the Production documentation, specifications and/or accompanying package inserts ("Documentation"). No claim of suitability for use in applications regulated by FDA is made. The warranty provided herein is valid only when used by properly trained individuals. Unless otherwise stated in the Documentation, this warranty is limited to one year from date of shipment when the Product is subjected to normal, proper and intended usage. This warranty does not extend to anyone other than the Buyer. Any model or sample furnished to Buyer is merely illustrative of the general type and quality of goods and does not represent that any Product will conform to such model or sample. NO OTHER WARRANTIES, EXPRESS OR IMPLIED, ARE GRANTED INCLUDING WITHOUT LIMITATION, IMPLIED WARRANTIES OF MERCHANTABILITY, FITNESS FOR ANY PARTICULAR PURPOSE, OR NON-INFRINGEMENT. BUYER'S EXCLUSIVE REMEDY FOR NON-CONFORMING PRODUCTS DURING THE WARRANTY PERIOD IS LIMITED TO REPAIR, REPLACEMENT OF OR REFUND FOR THE NON-CONFORMING PRODUCT(S) AT SELLER'S SOLE OPTION. THERE IS NO OBLIGATION TO REPAIR, REPLACE OR REFUND FOR PRODUCTS AS THE RESULT OF (I) ACCIDENT, DISASTER OR EVENT OF FORCE MAJEURE, (II) MISUSE, FAULT OR NEGLIGENCE OF OR BY BUYER, (III) USE OF THE PRODUCTS IN A MANNER FOR WHICH THEY WERE NOT DESIGNED, OR (IV) IMPROPER STORAGE AND HANDLING OF THE PRODUCTS. Unless otherwise expressly stated on the Product or in the documentation accompanying the Product, the Product is intended for research only and is not to be used for any other purpose, including without limitation, unauthorized commercial uses, in vitro diagnostic uses, ex vivo or in vivo therapeutic uses, or any type of consumption by or application to human or animals.