

# ROCK1 Polyclonal Antibody

Product Details	
Size	100 µL
Species Reactivity	Human, Mouse, Rat
Published Species	Human
Host/Isotype	Rabbit / IgG
Class	Polyclonal
Type	Antibody
Conjugate	Unconjugated
Immunogen	Recombinant protein fragment contain a sequence corresponding to a region within amino acids 107 and 371 (Q13464) of ROCK1
Form	Liquid
Concentration	0.35 mg/mL
Purification	Antigen affinity chromatography
Storage buffer	PBS, pH 7, with 20% glycerol
Contains	0.025% ProClin 300
Storage conditions	Store at 4°C short term. For long term storage, store at -20°C, avoiding freeze/thaw cycles.
RRID	AB_11155392

Applications	Tested Dilution	Publications
Western Blot (WB)	1:500-1:3,000	2 Publications
Immunohistochemistry (IHC)	-	1 Publication
Immunohistochemistry (Paraffin) (IHC (P))	1:100-1:1,000	-
Immunocytochemistry (ICC/IF)	1:100-1:1,000	1 Publication
Immunoprecipitation (IP)	1:100-1:500	-

## Product Specific Information

Recommended positive controls: 293T, A431, HeLa, HepG2, NIH-3T3, C2Cl2, rat brain.

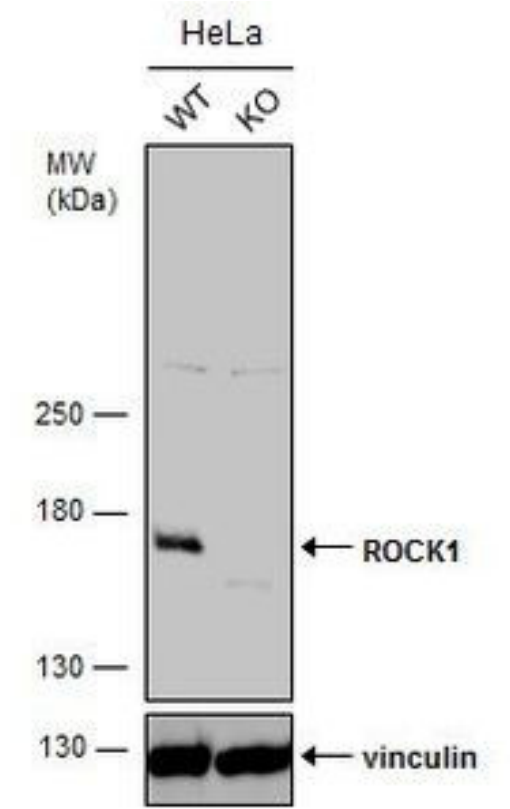
Predicted reactivity: Human (98%), Mouse (98%), Rat (98%), Zebrafish (90%), Rabbit (98%), Chicken (96%), Rhesus Monkey (98%), Bovine (99%).

Store product as a concentrated solution. Centrifuge briefly prior to opening the vial.

Product Images For ROCK1 Polyclonal Antibody

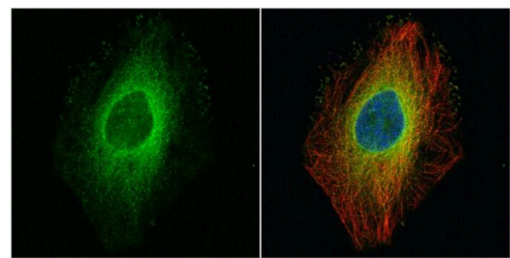
ROCK1 Antibody (PA5-22262)

Antibody specificity was demonstrated by CRISPR-Cas9 mediated knockout of target protein. Loss of signal was observed for target protein in ROCK1 knockout (KO) Hela cell line using Anti-ROCK1 Polyclonal Antibody (Product # PA5-22262). {KO}



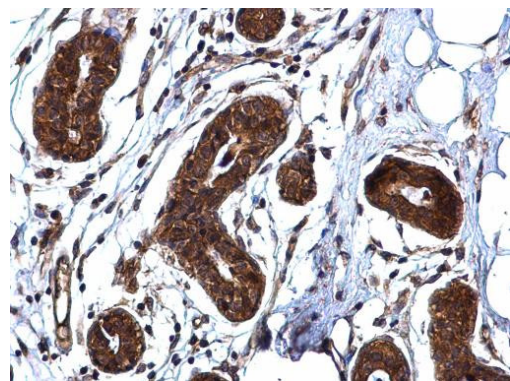
ROCK1 Antibody (PA5-22262) in ICC/IF

Immunocytochemistry-Immunofluorescence analysis of ROCK1 was performed in HeLa cells fixed in 4% paraformaldehyde at RT for 15 min. Green: ROCK1 Polyclonal Antibody (Product # PA5-22262) diluted at 1:500. Red: alpha Tubulin, a cytoskeleton marker. Blue: Hoechst 33342 staining.



ROCK1 Antibody (PA5-22262) in IHC (P)

ROCK1 Polyclonal Antibody detects ROCK1 protein at cytoplasm on human breast carcinoma by immunohistochemical analysis. Sample: Paraffin-embedded human breast carcinoma. ROCK1 Polyclonal Antibody (Product # PA5-22262) diluted at 1:500. Antigen Retrieval: EDTA based buffer, pH 8.0, 15 min.



View more figures on [thermofisher.com](https://thermofisher.com)

## Western Blot (2)

Open life sciences	Year 2021
<b>Endothelial cell-derived SSAO can increase MLC<sub>20</sub> phosphorylation in VSMCs.</b>	
"Published figure using ROCK1 polyclonal antibody (Product # PA5-22262) in Western Blot"	
Authors: Zhang Y,Zhang X,Cao Z,Huang Y,Zheng Y,Yang X	
Oncogene	Year 2017
<b>Rho-associated kinase 1 inhibition is synthetically lethal with von Hippel-Lindau deficiency in clear cell renal cell carcinoma.</b>	Species Human
"Published figure using ROCK1 polyclonal antibody (Product # PA5-22262) in Western Blot"	
Authors: Thompson JM,Nguyen QH,Singh M,Pavesic MW,Nesterenko I,Nelson LJ,Liao AC,Razorenova OV	

## Immunohistochemistry (1)

Cell death & disease	Year 2021
<b>Circ_0057558 promotes nonalcoholic fatty liver disease by regulating ROCK1/AMPK signaling through targeting miR-206.</b>	
"Published figure using ROCK1 polyclonal antibody (Product # PA5-22262) in Immunohistochemistry"	
Authors: Chen X,Tan QQ,Tan XR,Li SJ,Zhang XX	

## Immunocytochemistry (1)

eLife	Year 2020
<b>Periodic propagating waves coordinate RhoGTPase network dynamics at the leading and trailing edges during cell migration.</b>	Species Human
"Published figure using ROCK1 polyclonal antibody (Product # PA5-22262) in Immunocytochemistry"	Dilution 1:100
Authors: Bolado-Carrancio A,Rukhlenko OS,Nikonova E,Tsyganov MA,Wheeler A,Garcia-Munoz A,Kolch W,von Kriegsheim A,Kholodenko BN	

For Research Use Only. Not for use in diagnostic procedures. Not for resale without express authorization. Products are warranted to operate or perform substantially in conformance with published Product specifications in effect at the time of sale, as set forth in the Production documentation, specifications and/or accompanying package inserts ("Documentation"). No claim of suitability for use in applications regulated by FDA is made. The warranty provided herein is valid only when used by properly trained individuals. Unless otherwise stated in the Documentation, this warranty is limited to one year from date of shipment when the Product is subjected to normal, proper and intended usage. This warranty does not extend to anyone other than the Buyer. Any model or sample furnished to Buyer is merely illustrative of the general type and quality of goods and does not represent that any Product will conform to such model or sample. NO OTHER WARRANTIES, EXPRESS OR IMPLIED, ARE GRANTED INCLUDING WITHOUT LIMITATION, IMPLIED WARRANTIES OF MERCHANTABILITY, FITNESS FOR ANY PARTICULAR PURPOSE, OR NON INFRINGEMENT. BUYER'S EXCLUSIVE REMEDY FOR NON-CONFORMING PRODUCTS DURING THE WARRANTY PERIOD IS LIMITED TO REPAIR, REPLACEMENT OF OR REFUND FOR THE NON-CONFORMING PRODUCT(S) AT SELLER'S SOLE OPTION. THERE IS NO OBLIGATION TO REPAIR, REPLACE OR REFUND FOR PRODUCTS AS THE RESULT OF (I) ACCIDENT, DISASTER OR EVENT OF FORCE MAJEURE, (II) MISUSE, FAULT OR NEGLIGENCE OF OR BY BUYER, (III) USE OF THE PRODUCTS IN A MANNER FOR WHICH THEY WERE NOT DESIGNED, OR (IV) IMPROPER STORAGE AND HANDLING OF THE PRODUCTS. Unless otherwise expressly stated on the Product or in the documentation accompanying the Product, the Product is intended for research only and is not to be used for any other purpose, including without limitation, unauthorized commercial uses, in vitro diagnostic uses, ex vivo or in vivo therapeutic uses, or any type of consumption by or application to human or animals.