

# PKM2 Polyclonal Antibody

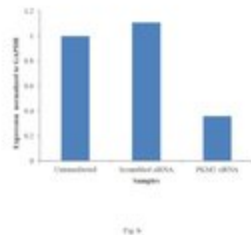
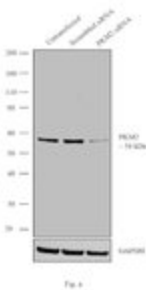
Product Details	
Size	100 µL
Species Reactivity	Human, Mouse, Rat
Published Species	Mouse, Human
Host/Isotype	Rabbit / IgG
Class	Polyclonal
Type	Antibody
Conjugate	Unconjugated
Immunogen	A synthetic peptide made to the internal region of human PKM2 protein (within residues 350-450).
Form	Liquid
Concentration	1 mg/mL
Purification	Antigen affinity chromatography
Storage buffer	PBS with 30% glycerol
Contains	0.1% sodium azide
Storage conditions	-20° C, Avoid Freeze/Thaw Cycles
RRID	AB_11151984

Applications	Tested Dilution	Publications
Western Blot (WB)	0.5 µg/mL	2 Publications
Immunohistochemistry (IHC)	-	1 Publication
Immunohistochemistry (Paraffin) (IHC (P))	1:100	-
Immunocytochemistry (ICC/IF)	1:200	-

## Product Specific Information

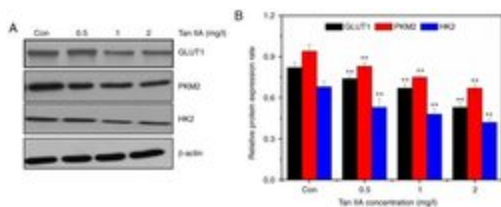
The target sequence has 95% sequence homology with bovine.

## Advanced Verification Data



### PKM2 Antibody (PA5-23034)

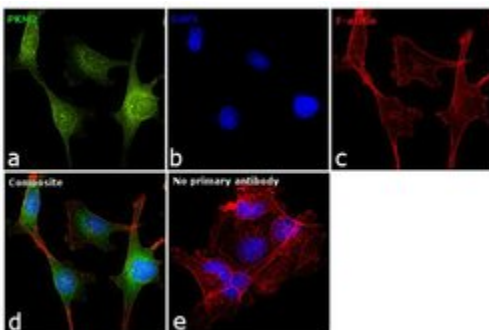
Antibody specificity was demonstrated by siRNA mediated knockdown of target protein. MDAMB231 cells were transfected with PKM2 siRNA and reduction of signal was observed in Western Blot using PKM2 Polyclonal Antibody (Product # PA5-23034). Knockdown validation info.



### PKM2 Antibody (PA5-23034)

Figure 5. Tan IIA-induces changes in the expression of GLUT1, PKM2 and HK2 in SiHa cells. (A) Following treatment with Tan IIA for 48 h, the expression of GLUT1, PKM2, and HK2 was assessed by western blot analysis. (B) Densitometric values were normalized by beta-actin and expressed as the mean  $\pm$  SD, n=3. \*\*P<0.01 compared with the control. Tan IIA, tanshinone IIA. Cell treatment validation info.

## Product Images For PKM2 Polyclonal Antibody



### PKM2 Antibody (PA5-23034) in ICC/IF

Immunofluorescence analysis of PKM2 was performed using 70% confluent log phase MDA-MB-231 cells. The cells were fixed with 4% paraformaldehyde for 10 minutes, permeabilized with 0.1% Triton™ X-100 for 15 minutes, and blocked with 1% BSA for 1 hour at room temperature. The cells were labeled with PKM2 Polyclonal Antibody (Product # PA5-23034) at 1:100 dilution in 0.1% BSA, incubated at 4 degree Celsius overnight and then labeled with Goat anti-Rabbit IgG (H+L) Superclonal™ Secondary Antibody, Alexa Fluor® 488 conjugate (Product # A27034) at a dilution of 1:2000 for 45 minutes at room temperature (Panel a: green). Nuclei (Panel b: blue) were stained with SlowFade® Gold Antifade Mountant with DAPI (Product # S36938). F-actin (Panel c: red) was stained with Rhodamine Phalloidin (Product # R415, 1:300). Panel d represents the merged image showing cytoplasmic and nuclear localization. Panel e represents control cells with no primary antibody to assess background. The images were captured at 60X magnification.

View more figures on [thermofisher.com](http://thermofisher.com)

## Western Blot (2)

### Cell death & disease

#### Breast cancer stem cells rely on fermentative glycolysis and are sensitive to 2-deoxyglucose treatment.

"PA5-23034 was used in western blot to identify the metabolic phenotype associated with breast cancer stem cells"

Authors: Ciavardelli D,Rossi C,Barcaroli D,Volpe S,Consalvo A,Zucchelli M,De Cola A,Scavo E,Carollo R,D'Agostino D, Forli F,D'Aguanno S,Todaro M,Stassi G,Di Ilio C,De Laurenzi V,Urbani A

**Species**  
Human

**Dilution**  
Not Cited

**Year**  
2014

### Journal of proteome research

#### p63 isoforms regulate metabolism of cancer stem cells.

"PA5-23034 was used in western blot to study the modulation of colon cancer stem cell metabolism by p63"

Authors: D'Aguanno S,Barcaroli D,Rossi C,Zucchelli M,Ciavardelli D,Cortese C,De Cola A,Volpe S,D'Agostino D, Todaro M,Stassi G,Di Ilio C,Urbani A,De Laurenzi V

**Species**  
Human

**Dilution**  
Not Cited

**Year**  
2014

## Immunohistochemistry (1)

### Scientific reports

#### Longitudinal in vivo bioimaging of hepatocyte transcription factor activity following cholestatic liver injury in mice.

"PA523034 was used in immunohistochemistry to report that hepatocytes rapidly upregulate NF- kB and Smad2/3 activity, and repress Notch signaling"

Authors: Delhove JM,Buckley SM,Perocheau DP,Karda R,Arbuthnot P,Henderson NC,Waddington SN,McKay TR

**Species**  
Mouse

**Dilution**  
1:200

**Year**  
2017

For Research Use Only. Not for use in diagnostic procedures. Not for resale without express authorization. Products are warranted to operate or perform substantially in conformance with published Product specifications in effect at the time of sale, as set forth in the Production documentation, specifications and/or accompanying package inserts ("Documentation"). No claim of suitability for use in applications regulated by FDA is made. The warranty provided herein is valid only when used by properly trained individuals. Unless otherwise stated in the Documentation, this warranty is limited to one year from date of shipment when the Product is subjected to normal, proper and intended usage. This warranty does not extend to anyone other than the Buyer. Any model or sample furnished to Buyer is merely illustrative of the general type and quality of goods and does not represent that any Product will conform to such model or sample. NO OTHER WARRANTIES, EXPRESS OR IMPLIED, ARE GRANTED INCLUDING WITHOUT LIMITATION, IMPLIED WARRANTIES OF MERCHANTABILITY, FITNESS FOR ANY PARTICULAR PURPOSE, OR NON INFRINGEMENT. BUYER'S EXCLUSIVE REMEDY FOR NON-CONFORMING PRODUCTS DURING THE WARRANTY PERIOD IS LIMITED TO REPAIR, REPLACEMENT OF OR REFUND FOR THE NON-CONFORMING PRODUCT(S) AT SELLER'S SOLE OPTION. THERE IS NO OBLIGATION TO REPAIR, REPLACE OR REFUND FOR PRODUCTS AS THE RESULT OF (I) ACCIDENT, DISASTER OR EVENT OF FORCE MAJEURE, (II) MISUSE, FAULT OR NEGLIGENCE OF OR BY BUYER, (III) USE OF THE PRODUCTS IN A MANNER FOR WHICH THEY WERE NOT DESIGNED, OR (IV) IMPROPER STORAGE AND HANDLING OF THE PRODUCTS. Unless otherwise expressly stated on the Product or in the documentation accompanying the Product, the Product is intended for research only and is not to be used for any other purpose, including without limitation, unauthorized commercial uses, in vitro diagnostic uses, ex vivo or in vivo therapeutic uses, or any type of consumption by or application to human or animals.