

GLUT4 Polyclonal Antibody

Product Details	
Size	100 µL
Species Reactivity	Human, Mouse, Plant, Rat
Published Species	Hamster, Human, Mouse
Host/Isotype	Rabbit / IgG
Class	Polyclonal
Type	Antibody
Conjugate	Unconjugated
Immunogen	A synthetic peptide from the human Glucose Transporter GLUT4 protein (between amino acids 1-100) [UniProt P14672]
Form	Liquid
Concentration	1 mg/mL
Purification	Antigen affinity chromatography
Storage buffer	PBS
Contains	0.02% sodium azide
Storage conditions	-20°C or -80°C if preferred
RRID	AB_11153908

Applications	Tested Dilution	Publications
Western Blot (WB)	0.5 µg/mL	5 Publications
Immunohistochemistry (IHC)	-	3 Publications
Immunohistochemistry (Paraffin) (IHC (P))	Assay-Dependent	-
Immunocytochemistry (ICC/IF)	1:100	-
Flow Cytometry (Flow)	Assay-Dependent	-
Immunomicroscopy (IM)	-	1 Publication

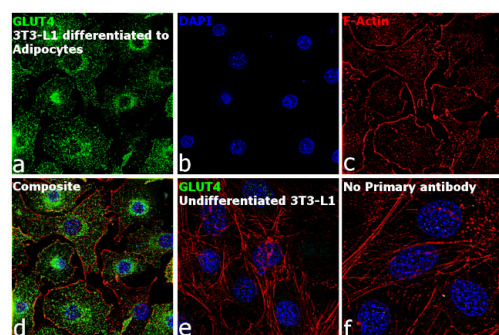
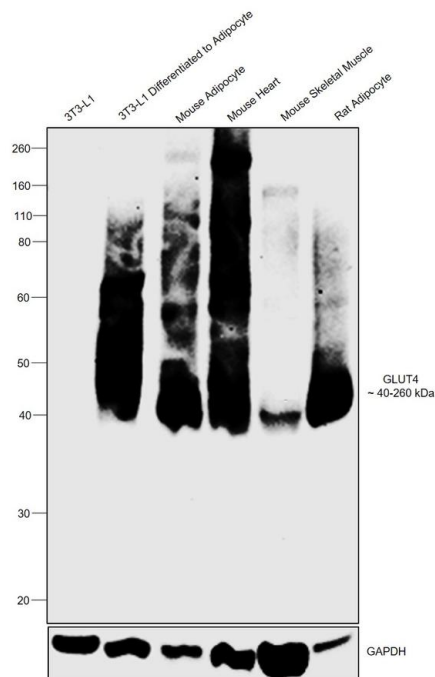
Product Specific Information

This antibody is predicted to react with rat based on 100% sequence homology.

Product Images For GLUT4 Polyclonal Antibody

GLUT4 Antibody (PA5-23052) in WB

Western blot was performed using Anti-GLUT4 Polyclonal Antibody (Product # PA5-23052) and due to heavy glycosylation, bands between 40-260 kDa corresponding to GLUT4 were observed across tissues tested. Also, the band was observed in 3T3-L1 differentiated to adipocytes when compared to undifferentiated 3T3-L1. The expression of GLUT4 is reported to be high in adipocytes. Membrane enriched extracts (30 µg lysate) of 3T3-L1 (Lane 1), 3T3-L1 differentiated to adipocyte (Lane 2) and tissue extracts of Mouse Adipocyte (Lane 3), Mouse Heart (Lane 4), Mouse Skeletal Muscle (Lane 5) and Rat Adipocyte (Lane 6) were electrophoresed using NuPAGE™ 4-12% Bis-Tris Protein Gel (Product # NP0322BOX). Resolved proteins were then transferred onto a nitrocellulose membrane (Product # IB23001) by iBlot® 2 Dry Blotting System (Product # IB21001). The blot was probed with the primary antibody (0.5 µg/mL) and detected by chemiluminescence with Goat anti-Rabbit IgG (Heavy Chain) Superclonal™ Recombinant Secondary Antibody, HRP (Product # A27036, 1:4,000 dilution) using the iBright FL 1000 (Product # A32752). Chemiluminescent detection was performed using Novex® ECL Chemiluminescent Substrate Reagent Kit (Product # WP20005).

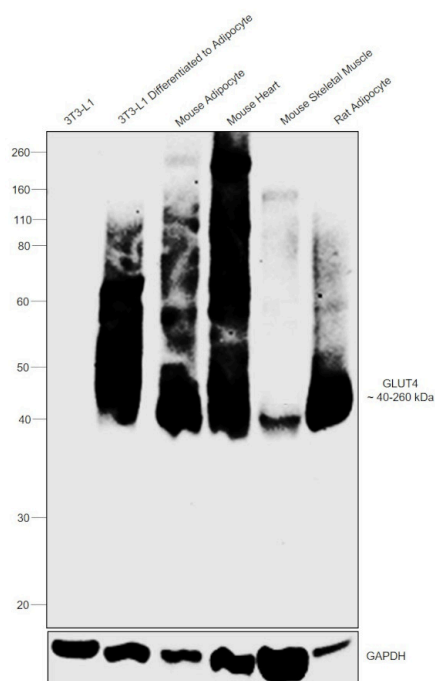


GLUT4 Antibody (PA5-23052)

Antibody specificity was demonstrated by detection of differential basal expression of the target across cell models owing to their inherent genetic constitution. Immunofluorescence analysis using GLUT4 Rabbit Polyclonal Antibody (Product # PA5-23052) showed expression of GLUT4 only in 3T3-L1 cells differentiated to adipocytes as compared to undifferentiated 3T3-L1 cells. {RE}

GLUT4 Antibody (PA5-23052)

Antibody specificity was demonstrated by detection of differential basal expression of the target across cell lines tested owing to their inherent genetic constitution. Relative expression of GLUT-4 was observed in 3T3-L1 differentiated to adipocyte in comparison to 3T3-L1 using Anti-GLUT4 Polyclonal Antibody (Product # PA5-23052) in Western Blot. {RE}



View more figures on [thermofisher.com](#)

🔍 9 References

Western Blot (5)

Laboratory animal research	Year 2022
Resistance exercise training-induced skeletal muscle strength provides protective effects on high-fat-diet-induced metabolic stress in mice.	
"Published figure using GLUT4 polyclonal antibody (Product # PA5-23052) in Western Blot"	
Authors: Kim HJ,Kim YJ,Kim IY,Seong JK	
Cancers	Year 2022
Ciliary Neurotrophic Factor Modulates Multiple Downstream Signaling Pathways in Prostate Cancer Inhibiting Cell Invasiveness.	Species Human
"PA5-23052 was used in Western Blotting to show that CNTF is expressed in PCa and CRPC tissues, and has a pivotal role in prostate cancer environment remodeling and as a negative modulator of invasion processes of CRPC cell models."	Dilution 1:500
Authors: Tossetta G,Fantone S,Gesuita R,Goteri G,Senzacqua M,Marcheggiani F,Tiano L,Marzioni D,Mazzucchelli R	

[View more WB references on thermofisher.com](#)

Immunohistochemistry (3)

Genes	Year 2022
Diane-35 and Metformin Induce Autophagy and Apoptosis in Polycystic Ovary Syndrome Women with Early-Stage Endometrial Carcinoma.	Species Human
"PA5-23052 was used in Immunohistochemistry (Paraffin), Western Blot to support the use of Diane-35 and metformin combination therapy for patients with PCOS and early EC."	
Authors: Liu Y,Wang Y,Yao D,Chen X,Zhang F,Feng Y,Li X	
Nature communications	Year 2022
Clenbuterol exerts antidiabetic activity through metabolic reprogramming of skeletal muscle cells.	Species Mouse
"PA5-23052 was used in Immunohistochemistry to elucidate the underlying cellular and molecular mechanisms of the beneficial metabolic effects of systemic treatment with 2-adrenergic receptor agonists."	
Authors: Meister J,Bone DBJ,Knudsen JR,Barella LF,Velenosi TJ,Akhmedov D,Lee RJ,Cohen AH,Gavrilova O,Cui Y,Karsenty G,Chen M,Weinstein LS,Kleinert M,Berdeaux R,Jensen TE,Richter EA,Wess J	

[View more IHC references on thermofisher.com](#)

More applications with references on [thermofisher.com](#)

IM (1)

For Research Use Only. Not for use in diagnostic procedures. Not for resale without express authorization. Products are warranted to operate or perform substantially in conformance with published Product specifications in effect at the time of sale, as set forth in the Production documentation, specifications and/or accompanying package inserts ("Documentation"). No claim of suitability for use in applications regulated by FDA is made. The warranty provided herein is valid only when used by properly trained individuals. Unless otherwise stated in the Documentation, this warranty is limited to one year from date of shipment when the Product is subjected to normal, proper and intended usage. This warranty does not extend to anyone other than the Buyer. Any model or sample furnished to Buyer is merely illustrative of the general type and quality of goods and does not represent that any Product will conform to such model or sample. NO OTHER WARRANTIES, EXPRESS OR IMPLIED, ARE GRANTED INCLUDING WITHOUT LIMITATION, IMPLIED WARRANTIES OF MERCHANTABILITY, FITNESS FOR ANY PARTICULAR PURPOSE, OR NON INFRINGEMENT. BUYER'S EXCLUSIVE REMEDY FOR NON-CONFORMING PRODUCTS DURING THE WARRANTY PERIOD IS LIMITED TO REPAIR, REPLACEMENT OF OR REFUND FOR THE NON-CONFORMING PRODUCT(S) AT SELLER'S SOLE OPTION. THERE IS NO OBLIGATION TO REPAIR, REPLACE OR REFUND FOR PRODUCTS AS THE RESULT OF (i) ACCIDENT, DISASTER OR EVENT OF FORCE MAJEURE, (ii) MISUSE, FAULT OR NEGLIGENCE OF OR BY BUYER, (iii) USE OF THE PRODUCTS IN A MANNER FOR WHICH THEY WERE NOT DESIGNED, OR (iv) IMPROPER STORAGE AND HANDLING OF THE PRODUCTS. Unless otherwise expressly stated on the Product or in the documentation accompanying the Product, the Product is intended for research only and is not to be used for any other purpose, including without limitation, unauthorized commercial uses, in vitro diagnostic uses, ex vivo or in vivo therapeutic uses, or any type of consumption by or application to human or animals.