

JMJD2C Polyclonal Antibody

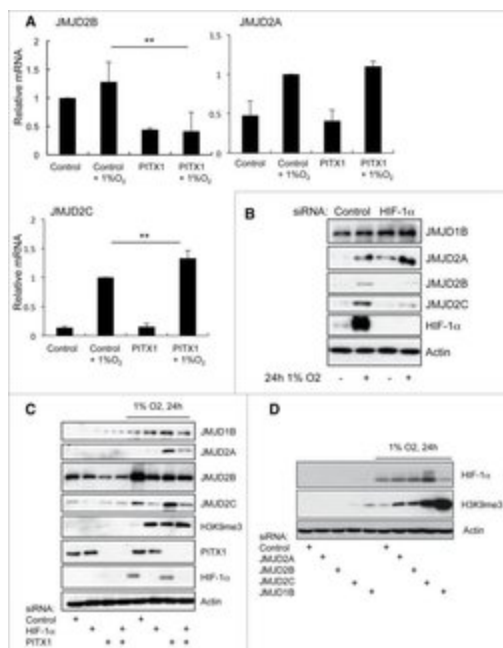
Product Details

Size	100 µL
Species Reactivity	Human, Mouse
Published Species	Human
Host/Isotype	Rabbit / IgG
Class	Polyclonal
Type	Antibody
Conjugate	Unconjugated
Immunogen	A synthetic peptide made to an internal region of the human JMJD2C protein (within residues 450-600).
Form	Liquid
Concentration	1.0 mg/mL
Purification	Antigen affinity chromatography
Storage buffer	PBS
Contains	0.05% sodium azide
Storage conditions	Store at 4°C short term. For long term storage, store at -20°C, avoiding freeze/thaw cycles.
RRID	AB_11152049

Applications	Tested Dilution	Publications
Western Blot (WB)	1:10,000	2 Publications
Immunohistochemistry (Paraffin) (IHC (P))	1:100	-
Immunocytochemistry (ICC/IF)	1:100	-
ChIP assay (ChIP)	Assay-Dependent	-

Product Specific Information

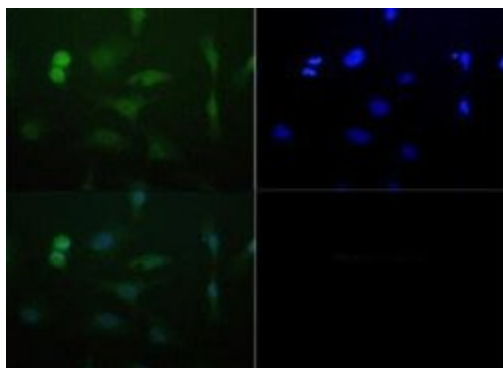
Prior to immunostaining paraffin tissues, antigen retrieval with sodium citrate buffer (pH 6.0) is recommended.



JMJD2C Antibody (PA5-23065)

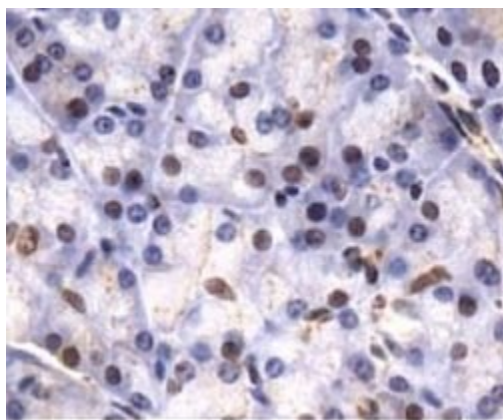
Figure 3. PITX1 regulates JMJD2B and JMJD2C expression in a HIF-1alpha-dependent manner. (A) HeLa cells were transfected with control or PITX1 siRNA, prior to treatment with 1% O₂ for 24 hours. Total mRNA was extracted and levels of JMJD2A, JMJD2B and JMJD2C mRNA were analyzed by qPCR. Graph depicts mean and standard deviation of a minimum of 3 independent experiments. Data was normalized using actin and compared to control siRNA. Student's t-test was performed to calculate p values, and levels of significance are denoted as follows: * P < 0.05, ** P < 0.01, and *** P < 0.001. (B) HeLa cells were transfected with control or HIF-1alpha siRNA, prior to treatment with 1% O₂ for 24 hours. Whole cell lysates were obtained 48 hours post-transfection and analyzed by protein gel blot using the indicated antibodies. (C) HeLa cells were transfected with control, PITX1, HIF-1a or PITX1 and HIF-1alpha siRNA, prior to treatment with 1% O₂ for 24 hours. Whole cell lysates were obtained 48 hours post-transfection and analyzed by western blot using the indicated antibodies. (D) HeLa cells were transfected with the indicated siRNAs oligonucleotides prior to treatment with 1% O₂ for 24 hours. Whole cell lysates were obtained 48 hours post-transfection and analyzed by protein gel blot using the indicated antibodies. Cell treatment validation info.

Product Images For JMJD2C Polyclonal Antibody



JMJD2C Antibody (PA5-23065) in ICC/IF

Immunofluorescent analysis of JMJD2C using a polyclonal antibody (Product # PA5-23065).



JMJD2C Antibody (PA5-23065) in IHC

Immunohistochemical analysis of JMJD2C using a polyclonal antibody (Product # PA5-23065).

View more figures on thermofisher.com

Western Blot (2)

Wellcome open research

RNA-seq analysis of PHD and VHL inhibitors reveals differences and similarities to the hypoxia response.

"PA5-23065 was used in Western Blotting to report on gene activation by PHD and VHL inhibition promoted by hypoxia via a HIF-dependent manner."

Authors: Frost J,Ciulli A,Rocha S

Species
Human

Dilution
1:1000

Year
2020

Cell cycle (Georgetown, Tex.)

PITX1, a specificity determinant in the HIF-1-mediated transcriptional response to hypoxia.

"PA5-23065 was used in western blot to identify PITX1 as a key specificity factor for HIF-1alpha dependent gene expression."

Authors: Mudie S,Bandarra D,Batie M,Biddlestone J,Moniz S,Ortmann B,Shmakova A,Rocha S

Species
Human

Dilution
Not Cited

Year
2015

For Research Use Only. Not for use in diagnostic procedures. Not for resale without express authorization. Products are warranted to operate or perform substantially in conformance with published Product specifications in effect at the time of sale, as set forth in the Production documentation, specifications and/or accompanying package inserts ("Documentation"). No claim of suitability for use in applications regulated by FDA is made. The warranty provided herein is valid only when used by properly trained individuals. Unless otherwise stated in the Documentation, this warranty is limited to one year from date of shipment when the Product is subjected to normal, proper and intended usage. This warranty does not extend to anyone other than the Buyer. Any model or sample furnished to Buyer is merely illustrative of the general type and quality of goods and does not represent that any Product will conform to such model or sample. NO OTHER WARRANTIES, EXPRESS OR IMPLIED, ARE GRANTED INCLUDING WITHOUT LIMITATION, IMPLIED WARRANTIES OF MERCHANTABILITY, FITNESS FOR ANY PARTICULAR PURPOSE, OR NON INFRINGEMENT. BUYER'S EXCLUSIVE REMEDY FOR NON-CONFORMING PRODUCTS DURING THE WARRANTY PERIOD IS LIMITED TO REPAIR, REPLACEMENT OF OR REFUND FOR THE NON-CONFORMING PRODUCT(S) AT SELLER'S SOLE OPTION. THERE IS NO OBLIGATION TO REPAIR, REPLACE OR REFUND FOR PRODUCTS AS THE RESULT OF (I) ACCIDENT, DISASTER OR EVENT OF FORCE MAJEURE, (II) MISUSE, FAULT OR NEGLIGENCE OF OR BY BUYER, (III) USE OF THE PRODUCTS IN A MANNER FOR WHICH THEY WERE NOT DESIGNED, OR (IV) IMPROPER STORAGE AND HANDLING OF THE PRODUCTS. Unless otherwise expressly stated on the Product or in the documentation accompanying the Product, the Product is intended for research only and is not to be used for any other purpose, including without limitation, unauthorized commercial uses, in vitro diagnostic uses, ex vivo or in vivo therapeutic uses, or any type of consumption by or application to human or animals.