

GPX2 Polyclonal Antibody

Product Details	
Size	100 µL
Species Reactivity	Human, Mouse
Published Species	Human
Host/Isotype	Rabbit / IgG
Class	Polyclonal
Type	Antibody
Conjugate	Unconjugated
Immunogen	Synthetic peptide corresponding to a region within amino acids 126 and 190 of Human GPX2
Form	Liquid
Concentration	1.07 mg/mL
Purification	Antigen affinity chromatography
Storage buffer	PBS, pH 7, with 20% glycerol
Contains	0.025% ProClin 300
Storage conditions	Store at 4°C short term. For long term storage, store at -20°C, avoiding freeze/thaw cycles.
RRID	AB_2544626

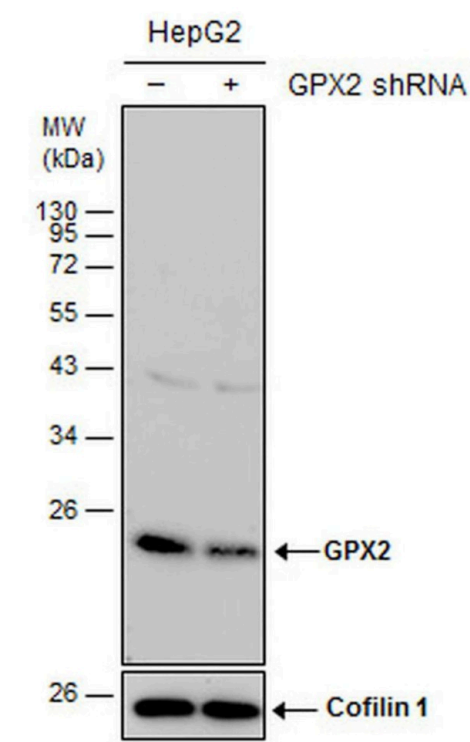
Applications	Tested Dilution	Publications
Western Blot (WB)	1:500-1:10,000	-
Immunohistochemistry (Paraffin) (IHC (P))	1:100-1:1,000	1 Publication
Immunocytochemistry (ICC/IF)	Assay-dependent	-
Immunoprecipitation (IP)	1:100-1:500	-

Product Specific Information

Recommended positive controls: HepG2.

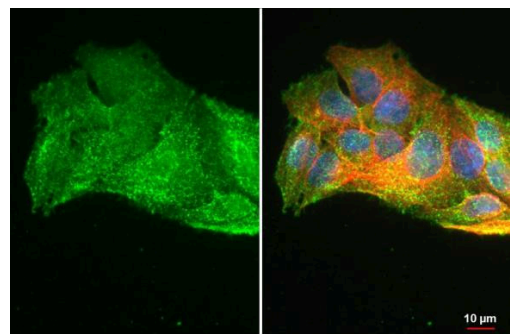
Store product as a concentrated solution. Centrifuge briefly prior to opening the vial.

Product Images For GPX2 Polyclonal Antibody



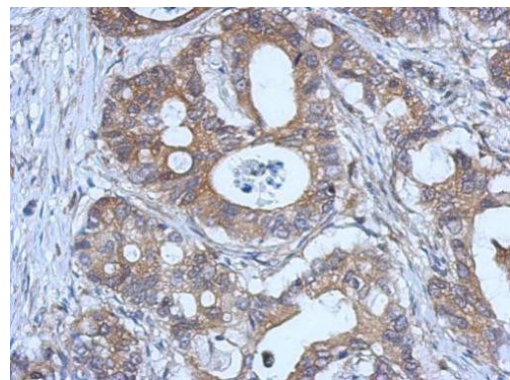
GPX2 Antibody (PA5-27150)

Antibody specificity was demonstrated by shRNA mediated knockdown of the target protein. HepG2 cells were transfected with GPX2 shRNA and decrease in signal intensity was observed in Western blot application using GPX2 Polyclonal Antibody (Product # PA5-27150). {KD}



GPX2 Antibody (PA5-27150) in ICC/IF

GPX2 Polyclonal Antibody detects GPX2 protein at granule by immunofluorescent analysis. Sample: HepG2 cells were fixed in 4% paraformaldehyde at RT for 15 min. Green: GPX2 stained by GPX2 Polyclonal Antibody (Product # PA5-27150) diluted at 1:500. Red: alpha Tubulin, a cytoskeleton marker, stained by alpha Tubulin Polyclonal Antibody [GT114] (Product # MA5-31466) diluted at 1:1,000. Blue: Fluoroshield with DAPI .



GPX2 Antibody (PA5-27150) in IHC (P)

Immunohistochemical analysis of paraffin-embedded human gastric cancer, using GPX2 (Product # PA5-27150) antibody at 1:500 dilution. Antigen Retrieval: EDTA based buffer, pH 8.0, 15 min.

[View more figures on thermofisher.com](https://www.thermofisher.com)

Immunohistochemistry (Paraffin) (1)

BMC cancer	Year 2016
Clinicopathological and prognostic significance of GPX2 protein expression in esophageal squamous cell carcinoma.	Species Human
"PA5-27150 was used in immunohistochemistry - paraffin section and western blot assess the use of GPX2 as a biomarker for esophageal squamous cell carcinoma"	Dilution 1:100
Authors: Lei Z, Tian D,Zhang C,Zhao S,Su M	

For Research Use Only. Not for use in diagnostic procedures. Not for resale without express authorization. Products are warranted to operate or perform substantially in conformance with published Product specifications in effect at the time of sale, as set forth in the Production documentation, specifications and/or accompanying package inserts ("Documentation"). No claim of suitability for use in applications regulated by FDA is made. The warranty provided herein is valid only when used by properly trained individuals. Unless otherwise stated in the Documentation, this warranty is limited to one year from date of shipment when the Product is subjected to normal, proper and intended usage. This warranty does not extend to anyone other than the Buyer. Any model or sample furnished to Buyer is merely illustrative of the general type and quality of goods and does not represent that any Product will conform to such model or sample. NO OTHER WARRANTIES, EXPRESS OR IMPLIED, ARE GRANTED INCLUDING WITHOUT LIMITATION, IMPLIED WARRANTIES OF MERCHANTABILITY, FITNESS FOR ANY PARTICULAR PURPOSE, OR NON-INFRINGEMENT. BUYER'S EXCLUSIVE REMEDY FOR NON-CONFORMING PRODUCTS DURING THE WARRANTY PERIOD IS LIMITED TO REPAIR, REPLACEMENT OF OR REFUND FOR THE NON-CONFORMING PRODUCT(S) AT SELLER'S SOLE OPTION. THERE IS NO OBLIGATION TO REPAIR, REPLACE OR REFUND FOR PRODUCTS AS THE RESULT OF (I) ACCIDENT, DISASTER OR EVENT OF FORCE MAJEURE, (II) MISUSE, FAULT OR NEGLIGENCE OF OR BY BUYER, (III) USE OF THE PRODUCTS IN A MANNER FOR WHICH THEY WERE NOT DESIGNED, OR (IV) IMPROPER STORAGE AND HANDLING OF THE PRODUCTS. Unless otherwise expressly stated on the Product or in the documentation accompanying the Product, the Product is intended for research only and is not to be used for any other purpose, including without limitation, unauthorized commercial uses, in vitro diagnostic uses, ex vivo or in vivo therapeutic uses, or any type of consumption by or application to human or animals.