

PIK3CA Polyclonal Antibody

Product Details

Size	100 µL
Species Reactivity	Human, Mouse
Host/Isotope	Rabbit / IgG
Class	Polyclonal
Type	Antibody
Conjugate	Unconjugated
Immunogen	Recombinant protein fragment corresponding to a region within amino acids 3 and 170 of Human PI3 kinase p110 alpha
Form	Liquid
Concentration	1.98 mg/ml
Purification	Antigen affinity chromatography
Storage buffer	PBS, pH 7, with 1% BSA, 20% glycerol
Contains	0.01% thimerosal
Storage Conditions	-20° C, Avoid Freeze/Thaw Cycles
RRID	AB_2544668

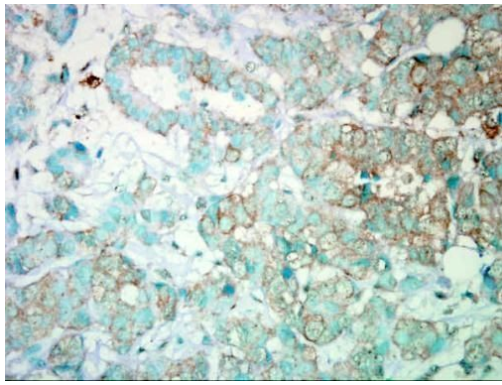
Applications	Tested	Dilution	Published
Immunohistochemistry (Paraffin) (IHC (P))	✓	1:100-1:1000	1 Publication
Western Blot (WB)	✓	1:500-1:3000	

Product Specific Information

PA5-27192 targets PI3 kinase p110 alpha in IHC (P) and WB applications and shows reactivity with Human and mouse samples.

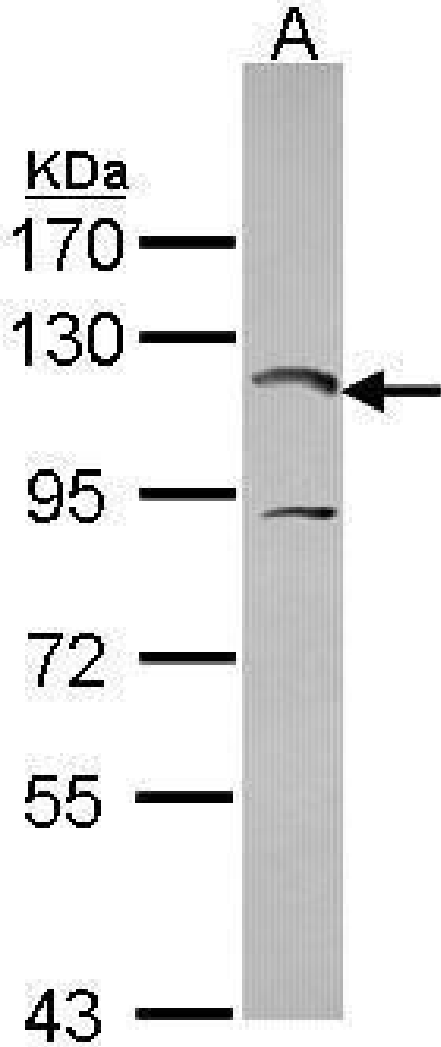
The PA5-27192 immunogen is recombinant protein fragment corresponding to a region within amino acids 3 and 170 of Human PI3 kinase p110 alpha.

Product Images For PIK3CA Polyclonal Antibody



PIK3CA Antibody (PA5-27192) in IHC (P)

Immunohistochemical analysis of PI3 kinase p110 alpha in paraffin-embedded human breast carcinoma using a PI3 kinase p110 alpha polyclonal antibody (Product # PA5-27192).

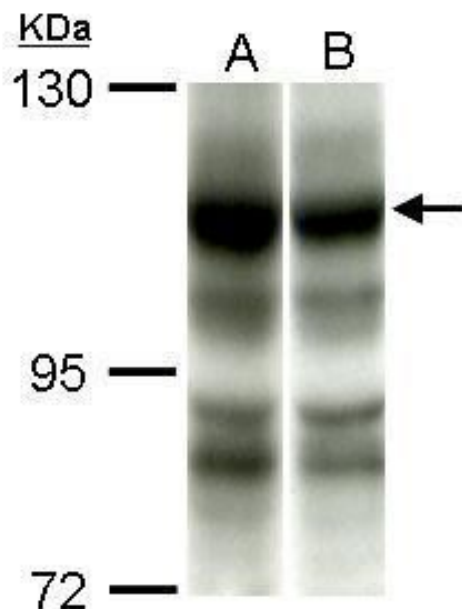


PIK3CA Antibody (PA5-27192) in WB

Western blot analysis of PI3 kinase p110 alpha using 30µg of HCT116 lysate. Samples were loaded onto a 7.5% SDS-PAGE gel and probed with a PI3 kinase p110 alpha polyclonal antibody (Product # PA5-27192) at a dilution of 1:1000.

PIK3CA Antibody (PA5-27192) in WB

Western blot analysis of PI3 kinase p110 alpha using 50µg of A) C2C12 and B) C2C12+AEA10mM lysate. Samples were probed with a PI3 kinase p110 alpha polyclonal antibody (Product # PA5-27192) at a dilution of 1:1000.



1 Reference

Immunohistochemistry (Paraffin) (1)

BMC cancer

Snail heterogeneity in clear cell renal cell carcinoma.

"PA5-27192 was used in immunohistochemistry - paraffin section to study clear cell renal cell carcinoma and snail heterogeneity"

Authors: Zaldumbide L, Erramuzpe A, Guarch R, Pulido R, Cortés JM, López JI

Species
Not Applicable

Dilution
1:500

Year
2016

For Research Use Only. Not for use in diagnostic procedures. Not for resale without express authorization. Products are warranted to operate or perform substantially in conformance with published Product specifications in effect at the time of sale, as set forth in the Production documentation, specifications and/or accompanying package inserts ("Documentation"). No claim of suitability for use in applications regulated by FDA is made. The warranty provided herein is valid only when used by properly trained individuals. Unless otherwise stated in the Documentation, this warranty is limited to one year from date of shipment when the Product is subjected to normal, proper and intended usage. This warranty does not extend to anyone other than the Buyer. Any model or sample furnished to Buyer is merely illustrative of the general type and quality of goods and does not represent that any Product will conform to such model or sample. NO OTHER WARRANTIES, EXPRESS OR IMPLIED, ARE GRANTED INCLUDING WITHOUT LIMITATION, IMPLIED WARRANTIES OF MERCHANTABILITY, FITNESS FOR ANY PARTICULAR PURPOSE, OR NON INFRINGEMENT. BUYER'S EXCLUSIVE REMEDY FOR NON-CONFORMING PRODUCTS DURING THE WARRANTY PERIOD IS LIMITED TO REPAIR, REPLACEMENT OF OR REFUND FOR THE NON-CONFORMING PRODUCT(S) AT SELLER'S SOLE OPTION. THERE IS NO OBLIGATION TO REPAIR, REPLACE OR REFUND FOR PRODUCTS AS THE RESULT OF (I) ACCIDENT, DISASTER OR EVENT OF FORCE MAJEURE, (II) MISUSE, FAULT OR NEGLIGENCE OF OR BY BUYER, (III) USE OF THE PRODUCTS IN A MANNER FOR WHICH THEY WERE NOT DESIGNED, OR (IV) IMPROPER STORAGE AND HANDLING OF THE PRODUCTS. Unless otherwise expressly stated on the Product or in the documentation accompanying the Product, the Product is intended for research only and is not to be used for any other purpose, including without limitation, unauthorized commercial uses, in vitro diagnostic uses, ex vivo or in vivo therapeutic uses, or any type of consumption by or application to human or animals.