

C/EBP beta Polyclonal Antibody

Product Details	
Size	100 µL
Species Reactivity	Human
Published Species	Mouse
Host/Isotype	Rabbit / IgG
Class	Polyclonal
Type	Antibody
Conjugate	Unconjugated
Immunogen	Synthetic peptide corresponding to a region within amino acids 1 and 95 of C/EBP beta
Form	Liquid
Concentration	0.89 mg/mL
Purification	Antigen affinity chromatography
Storage buffer	PBS, pH 7, with 20% glycerol
Contains	0.025% ProClin 300
Storage conditions	Store at 4°C short term. For long term storage, store at -20°C, avoiding freeze/thaw cycles.
RRID	AB_2544720

Applications	Tested Dilution	Publications
Western Blot (WB)	1:500-1:3,000	-
Immunohistochemistry (Paraffin) (IHC (P))	1:100-1:1,000	-
Immunocytochemistry (ICC/IF)	1:100-1:1,000	-
Immunoprecipitation (IP)	1:100-1:500	-
ChIP assay (ChIP)	Assay-Dependent	1 Publication

Product Specific Information

Recommended positive controls: U87-MG.

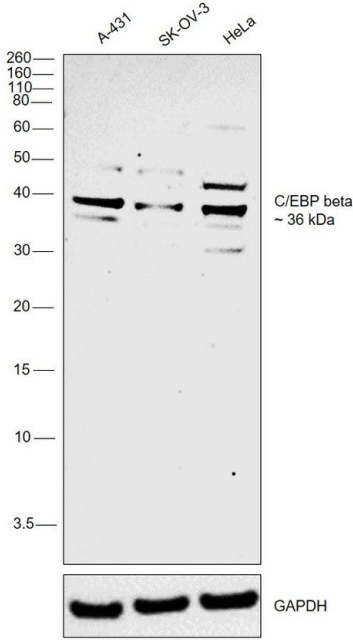
Predicted reactivity: Pig (100%).

Store product as a concentrated solution. Centrifuge briefly prior to opening the vial.

Product Images For C/EBP beta Polyclonal Antibody

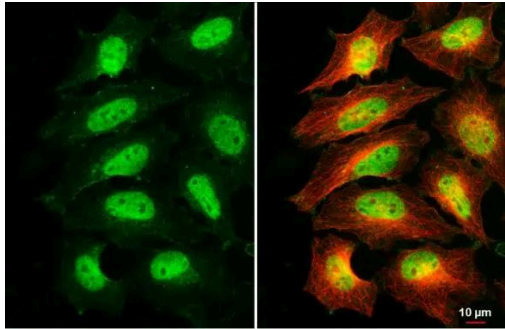
C/EBP beta Antibody (PA5-27244) in WB

Western blot was performed using Anti-C/EBP beta Polyclonal Antibody (Product # PA5-27244) and a band at ~36 kDa corresponding to C/EBP beta was observed across cell lines tested. Modified whole cell extracts (30 µg lysate) of A-431 (Lane 1), SK-OV-3 (Lane 2) and HeLa (Lane 3) were electrophoresed using Novex® NuPAGE® 4-12% % Bis-Tris gel (Product # NP0322BOX). Resolved proteins were then transferred onto a nitrocellulose membrane (Product # IB23001) by iBlot® 2 Dry Blotting System (Product # IB21001). The blot was probed with the primary antibody (1:500 dilution) and detected by chemiluminescence with Goat anti-Rabbit IgG (Heavy Chain) Superclonal™ Recombinant Secondary Antibody, HRP (Product # A27036, 1:4000 dilution) using the iBright FL 1000 (Product # A32752). Chemiluminescent detection was performed using Novex® ECL Chemiluminescent Substrate Reagent Kit (Product # WP20005)..



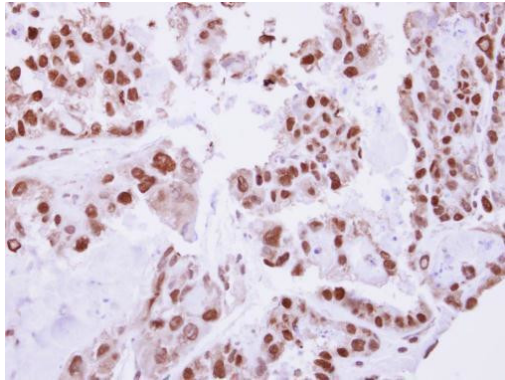
C/EBP beta Antibody (PA5-27244) in ICC/IF

Immunofluorescent analysis of C/EBP beta at cytoplasm and nucleus in HeLa cells. Cells were fixed in 4% paraformaldehyde at RT for 15 min. Green: C/EBP beta stained by C/EBP beta polyclonal antibody (Product # PA5-27244) diluted at 1:500. Red: alpha Tubulin, a cytoskeleton marker, stained by alpha Tubulin antibody [GT114] diluted at 1:1,000.



C/EBP beta Antibody (PA5-27244) in IHC (P)

Immunohistochemical analysis of paraffin-embedded human ovarian cancer, using C/EBP beta (Product # PA5-27244) antibody at 1:250 dilution. Antigen Retrieval: EDTA based buffer, pH 8.0, 15 min.



View more figures on thermofisher.com

ChIP assay (1)

Immunity	Year 2021
Metformin inhibition of mitochondrial ATP and DNA synthesis abrogates NLRP3 inflammasome activation and pulmonary inflammation.	Species Mouse
<p>"PA5-27244 was used in ChIP assay to conclude that inhibition of ATP and mtDNA synthesis is sufficient for ARDS amelioration."</p> <p>Authors: Xian H,Liu Y,Rundberg Nilsson A,Gatchalian R,Crother TR,Tourtellotte WG,Zhang Y,Aleman-Muench GR,Lewis G,Chen W,Kang S,Luevanos M,Trudler D,Lipton SA,Soroosh P,Tejaro J,de la Torre JC,Arditi M,Karin M, Sanchez-Lopez E</p>	

For Research Use Only. Not for use in diagnostic procedures. Not for resale without express authorization. Products are warranted to operate or perform substantially in conformance with published Product specifications in effect at the time of sale, as set forth in the Production documentation, specifications and/or accompanying package inserts ("Documentation"). No claim of suitability for use in applications regulated by FDA is made. The warranty provided herein is valid only when used by properly trained individuals. Unless otherwise stated in the Documentation, this warranty is limited to one year from date of shipment when the Product is subjected to normal, proper and intended usage. This warranty does not extend to anyone other than the Buyer. Any model or sample furnished to Buyer is merely illustrative of the general type and quality of goods and does not represent that any Product will conform to such model or sample. NO OTHER WARRANTIES, EXPRESS OR IMPLIED, ARE GRANTED INCLUDING WITHOUT LIMITATION, IMPLIED WARRANTIES OF MERCHANTABILITY, FITNESS FOR ANY PARTICULAR PURPOSE, OR NON INFRINGEMENT. BUYER'S EXCLUSIVE REMEDY FOR NON-CONFORMING PRODUCTS DURING THE WARRANTY PERIOD IS LIMITED TO REPAIR, REPLACEMENT OF OR REFUND FOR THE NON-CONFORMING PRODUCT(S) AT SELLER'S SOLE OPTION. THERE IS NO OBLIGATION TO REPAIR, REPLACE OR REFUND FOR PRODUCTS AS THE RESULT OF (I) ACCIDENT, DISASTER OR EVENT OF FORCE MAJEURE, (II) MISUSE, FAULT OR NEGLIGENCE OF OR BY BUYER, (III) USE OF THE PRODUCTS IN A MANNER FOR WHICH THEY WERE NOT DESIGNED, OR (IV) IMPROPER STORAGE AND HANDLING OF THE PRODUCTS. Unless otherwise expressly stated on the Product or in the documentation accompanying the Product, the Product is intended for research only and is not to be used for any other purpose, including without limitation, unauthorized commercial uses, in vitro diagnostic uses, ex vivo or in vivo therapeutic uses, or any type of consumption by or application to human or animals.