

# Synaptophysin Polyclonal Antibody

Product Details	
Size	100 µL
Species Reactivity	Human, Mouse, Rat
Published Species	Mouse
Host/Isotype	Rabbit / IgG
Class	Polyclonal
Type	Antibody
Conjugate	Unconjugated
Immunogen	Recombinant fragment corresponding to a region within amino acids 170 and 313 of Human Synaptophysin
Form	Liquid
Concentration	0.65 mg/mL
Purification	Antigen affinity chromatography
Storage buffer	PBS, pH 7, with 20% glycerol
Contains	0.025% Proclin 300
Storage conditions	Store at 4°C short term. For long term storage, store at -20°C, avoiding freeze/thaw cycles.
RRID	AB_2544762

Applications	Tested Dilution	Publications
Western Blot (WB)	1:500-1:50,000	-
Immunohistochemistry (Paraffin) (IHC (P))	1:100-1:1,000	1 Publication
Immunohistochemistry (Frozen) (IHC (F))	Assay-dependent	-
Immunocytochemistry (ICC/IF)	1:100-1:1,000	1 Publication

## Product Specific Information

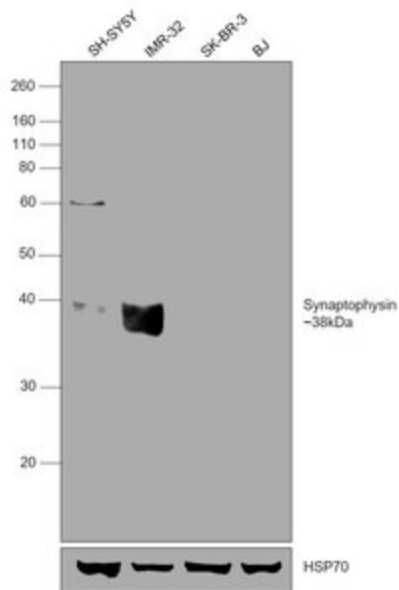
Recommended positive controls: human brain, mouse brain, rat brain, Mouse small intestine, LNCaP.

Predicted reactivity: Mouse (94%), Rat (95%), Rhesus Monkey (97%), Bovine (96%).

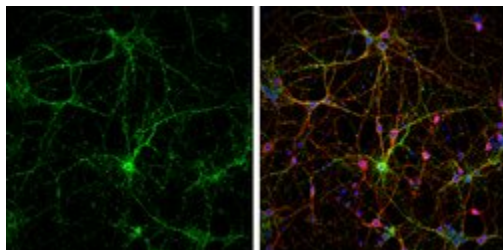
Store product as a concentrated solution. Centrifuge briefly prior to opening the vial.

### Synaptophysin Antibody (PA5-27286)

Antibody specificity was demonstrated by detection of differential basal expression of the target across the tested cell lines owing to their inherent genetic constitution. Relative expression of Synaptophysin was observed in in SH-SY5Y and IMR-32 but not in SK-BR-3 and BJ using Anti-Synaptophysin Polyclonal Antibody (Product # PA5-27286) in Western Blot. Relative expression validation info.

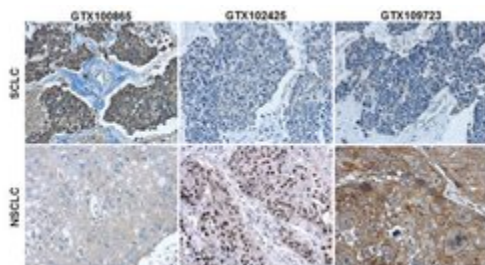


### Product Images For Synaptophysin Polyclonal Antibody



### Synaptophysin Antibody (PA5-27286) in ICC/IF

Immunocytochemistry-Immunofluorescence analysis of Synaptophysin was performed in DIV9 rat E18 primary cortical neurons fixed in 4% paraformaldehyde at RT for 15 min. Green: Synaptophysin Polyclonal Antibody (Product # PA5-27286) diluted at 1:500. Red: beta Tubulin 3/ Tuj1, stained by beta Tubulin 3/ Tuj1 antibody. Blue: Fluoroshield with DAPI.



### Synaptophysin Antibody (PA5-27286) in IHC (P)

Immunohistochemistry analysis of Synaptophysin and Cytokeratin 7 was performed in human small cell lung cancer (SCLC) (upper panel) and non-small cell lung cancer (NSCLC) (lower panel) specimens. The section was pre-treated tissue using heat mediated antigen retrieval with sodium citrate buffer (pH6) for 15 mins. The section was then incubated with Synaptophysin Polyclonal Antibody (Product # PA5-27286) or Cytokeratin 7 Polyclonal Antibody (Product # PA5-29033) at 1:500 overnight at 4° C and detected using an HRP conjugated avidin-biotin-peroxidase Complex system. DAB was used as the chromogen and counterstained with haematoxylin. Antigen Retrieval: Citrate buffer, pH 6.0, 15 min.

View more figures on [thermofisher.com](https://thermofisher.com)

### Immunohistochemistry (Paraffin) (1)

#### Cell reports

#### ASCL1 and NEUROD1 Reveal Heterogeneity in Pulmonary Neuroendocrine Tumors and Regulate Distinct Genetic Programs.

"PA527286 was used in immunohistochemistry - paraffin section to demonstrate that ASCL1 and NEUROD1 distinguish heterogeneity in small cell lung carcinoma"

Authors: Borromeo MD, Savage TK, Kollipara RK, He M, Augustyn A, Osborne JK, Girard L, Minna JD, Gazdar AF, Cobb MH, Johnson JE

**Species**  
Mouse

**Dilution**  
1:500

**Year**  
2016

### Immunocytochemistry (1)

#### Stem cell research

#### Rapid generation of sub-type, region-specific neurons and neural networks from human pluripotent stem cell-derived neurospheres.

"Published figure using Synaptophysin polyclonal antibody (Product # PA5-27286) in Immunocytochemistry"

Authors: Begum AN, Guoynes C, Cho J, Hao J, Lutfy K, Hong Y

**Species**  
Not Applicable

**Dilution**  
Not Cited

**Year**  
2015

For Research Use Only. Not for use in diagnostic procedures. Not for resale without express authorization. Products are warranted to operate or perform substantially in conformance with published Product specifications in effect at the time of sale, as set forth in the Production documentation, specifications and/or accompanying package inserts ("Documentation"). No claim of suitability for use in applications regulated by FDA is made. The warranty provided herein is valid only when used by properly trained individuals. Unless otherwise stated in the Documentation, this warranty is limited to one year from date of shipment when the Product is subjected to normal, proper and intended usage. This warranty does not extend to anyone other than the Buyer. Any model or sample furnished to Buyer is merely illustrative of the general type and quality of goods and does not represent that any Product will conform to such model or sample. NO OTHER WARRANTIES, EXPRESS OR IMPLIED, ARE GRANTED INCLUDING WITHOUT LIMITATION, IMPLIED WARRANTIES OF MERCHANTABILITY, FITNESS FOR ANY PARTICULAR PURPOSE, OR NON INFRINGEMENT. BUYER'S EXCLUSIVE REMEDY FOR NON-CONFORMING PRODUCTS DURING THE WARRANTY PERIOD IS LIMITED TO REPAIR, REPLACEMENT OF OR REFUND FOR THE NON-CONFORMING PRODUCT(S) AT SELLER'S SOLE OPTION. THERE IS NO OBLIGATION TO REPAIR, REPLACE OR REFUND FOR PRODUCTS AS THE RESULT OF (I) ACCIDENT, DISASTER OR EVENT OF FORCE MAJEURE, (II) MISUSE, FAULT OR NEGLIGENCE OF OR BY BUYER, (III) USE OF THE PRODUCTS IN A MANNER FOR WHICH THEY WERE NOT DESIGNED, OR (IV) IMPROPER STORAGE AND HANDLING OF THE PRODUCTS. Unless otherwise expressly stated on the Product or in the documentation accompanying the Product, the Product is intended for research only and is not to be used for any other purpose, including without limitation, unauthorized commercial uses, in vitro diagnostic uses, ex vivo or in vivo therapeutic uses, or any type of consumption by or application to human or animals.