

# Creatine Kinase BB Polyclonal Antibody

Product Details	
Size	100 µL
Species Reactivity	Human, Mouse, Rat
Published Species	Human
Host/Isotype	Rabbit / IgG
Class	Polyclonal
Type	Antibody
Conjugate	Unconjugated
Immunogen	Recombinant fragment corresponding to a region within amino acids 16 and 209 of Human Creatine kinase
Form	Liquid
Concentration	2.05 mg/mL
Purification	Protein A
Storage buffer	PBS, pH 7, with 20% glycerol
Contains	0.025% ProClin 300
Storage conditions	Store at 4°C short term. For long term storage, store at -20°C, avoiding freeze/thaw cycles.
RRID	AB_2544985

Applications	Tested Dilution	Publications
Western Blot (WB)	1:500-1:3,000	-
Immunohistochemistry (Paraffin) (IHC (P))	1:100-1:1,000	-
Immunohistochemistry (Frozen) (IHC (F))	-	1 Publication
Immunocytochemistry (ICC/IF)	1:100-1:1,000	-

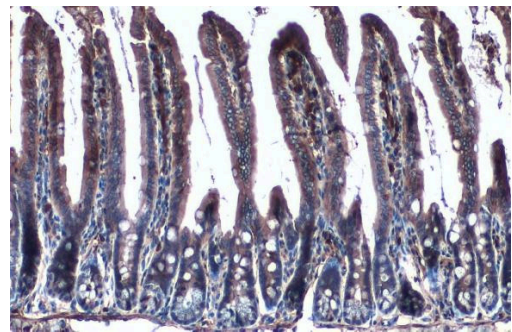
## Product Specific Information

Recommended positive controls: 293T, H1299, HeLaS3, HepG2, NIH-3T3.

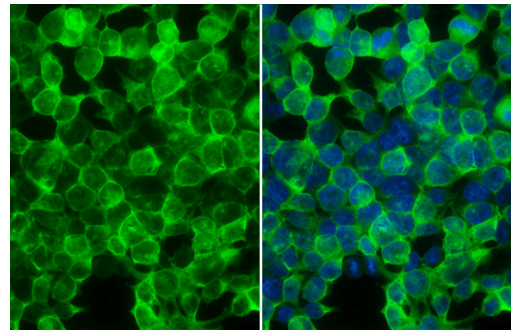
Predicted reactivity: Mouse (95%), Rat (96%), Xenopus laevis (85%), Pig (98%), Rabbit (96%), Chicken (89%), Rhesus Monkey (99%), Bovine (97%).

Store product as a concentrated solution. Centrifuge briefly prior to opening the vial.

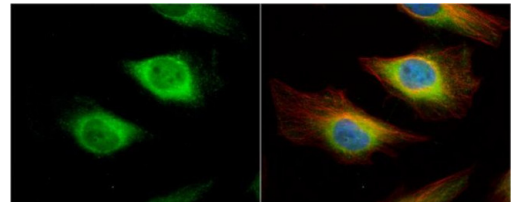
Product Images For Creatine Kinase BB Polyclonal Antibody



**Creatine Kinase BB Antibody (PA5-27509) in IHC (P)**  
Creatine Kinase BB Polyclonal Antibody detects Creatine kinase (brain) protein at cytoplasm by immunohistochemical analysis. Sample: Paraffin-embedded mouse intestine. Creatine kinase (brain) stained by Creatine Kinase BB Polyclonal Antibody (Product # PA5-27509) diluted at 1:500. Antigen Retrieval: Citrate buffer, pH 6.0, 15 min.



**Creatine Kinase BB Antibody (PA5-27509) in ICC/IF**  
Creatine Kinase BB Polyclonal Antibody detects Creatine kinase (brain) protein at cytoplasm by immunofluorescent analysis. Sample: 293T cells were fixed in 4% paraformaldehyde at RT for 15 min. Green: Creatine kinase (brain) stained by Creatine Kinase BB Polyclonal Antibody (Product # PA5-27509) diluted at 1:1,000. Blue: Fluoroshield with DAPI .



**Creatine Kinase BB Antibody (PA5-27509) in ICC/IF**  
Immunocytochemistry-Immunofluorescence analysis of Creatine Kinase BB was performed in HeLa cells fixed in 4% paraformaldehyde at RT for 15 min. Green: Creatine Kinase BB Polyclonal Antibody (Product # PA5 27509) diluted at 1:500. Red: alpha Tubulin, a cytoskeleton marker. Blue: Hoechst 33342 staining.

View more figures on [thermofisher.com](https://thermofisher.com)

1 Reference

Immunohistochemistry (Frozen) (1)

Journal of proteome research	Year 2015
Label-free proteomics uncovers energy metabolism and focal adhesion regulations responsive for endometrium receptivity.	Species Human
"PA5-27509 was used in immunohistochemistry - frozen section and western blot to analyze the proteome during the endometrial receptivity process"	Dilution 1:200
Authors: Chen Q,Zhang A,Yu F,Gao J,Liu Y,Yu C,Zhou H,Xu C	

For Research Use Only. Not for use in diagnostic procedures. Not for resale without express authorization. Products are warranted to operate or perform substantially in conformance with published Product specifications in effect at the time of sale, as set forth in the Production documentation, specifications and/or accompanying package inserts ("Documentation"). No claim of suitability for use in applications regulated by FDA is made. The warranty provided herein is valid only when used by properly trained individuals. Unless otherwise stated in the Documentation, this warranty is limited to one year from date of shipment when the Product is subjected to normal, proper and intended usage. This warranty does not extend to anyone other than the Buyer. Any model or sample furnished to Buyer is merely illustrative of the general type and quality of goods and does not represent that any Product will conform to such model or sample. NO OTHER WARRANTIES, EXPRESS OR IMPLIED, ARE GRANTED INCLUDING WITHOUT LIMITATION, IMPLIED WARRANTIES OF MERCHANTABILITY, FITNESS FOR ANY PARTICULAR PURPOSE, OR NON INFRINGEMENT. BUYER'S EXCLUSIVE REMEDY FOR NON-CONFORMING PRODUCTS DURING THE WARRANTY PERIOD IS LIMITED TO REPAIR, REPLACEMENT OF OR REFUND FOR THE NON-CONFORMING PRODUCT(S) AT SELLER'S SOLE OPTION. THERE IS NO OBLIGATION TO REPAIR, REPLACE OR REFUND FOR PRODUCTS AS THE RESULT OF (I) ACCIDENT, DISASTER OR EVENT OF FORCE MAJEURE, (II) MISUSE, FAULT OR NEGLIGENCE OF OR BY BUYER, (III) USE OF THE PRODUCTS IN A MANNER FOR WHICH THEY WERE NOT DESIGNED, OR (IV) IMPROPER STORAGE AND HANDLING OF THE PRODUCTS. Unless otherwise expressly stated on the Product or in the documentation accompanying the Product, the Product is intended for research only and is not to be used for any other purpose, including without limitation, unauthorized commercial uses, in vitro diagnostic uses, ex vivo or in vivo therapeutic uses, or any type of consumption by or application to human or animals.