

TUFM Polyclonal Antibody

Product Details	
Size	100 µL
Species Reactivity	Human, Mouse
Published Species	Human
Host/Isotype	Rabbit / IgG
Class	Polyclonal
Type	Antibody
Conjugate	Unconjugated
Immunogen	Recombinant fragment corresponding to a region within amino acids 25 and 276 of Human TUFM
Form	Liquid
Concentration	0.3 mg/mL
Purification	Antigen affinity chromatography
Storage buffer	PBS, pH 7, with 20% glycerol, 1% BSA
Contains	0.025% ProClin 300
Storage conditions	Store at 4°C short term. For long term storage, store at -20°C, avoiding freeze/thaw cycles.
RRID	AB_2544987

Applications	Tested Dilution	Publications
Western Blot (WB)	1:500-1:3,000	2 Publications
Immunohistochemistry (Paraffin) (IHC (P))	1:100-1:1,000	-
Immunocytochemistry (ICC/IF)	1:100-1:1,000	-
Immunoprecipitation (IP)	1:100-1:500	-

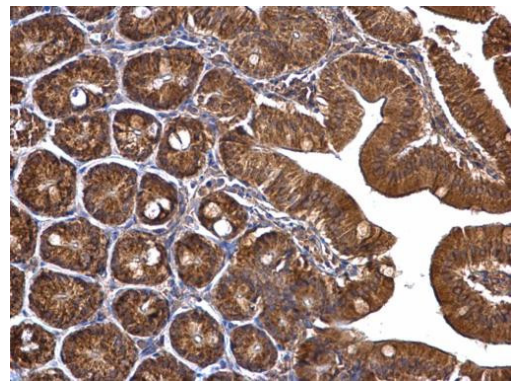
Product Specific Information

Recommended positive controls: 293T, H1299, NIH-3T3.

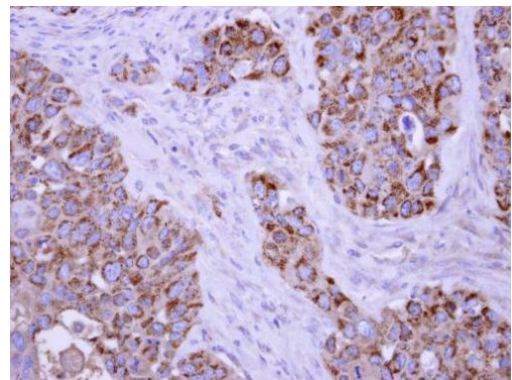
Predicted reactivity: Mouse (98%), Rat (98%), Rhesus Monkey (100%), Bovine (98%).

Store product as a concentrated solution. Centrifuge briefly prior to opening the vial.

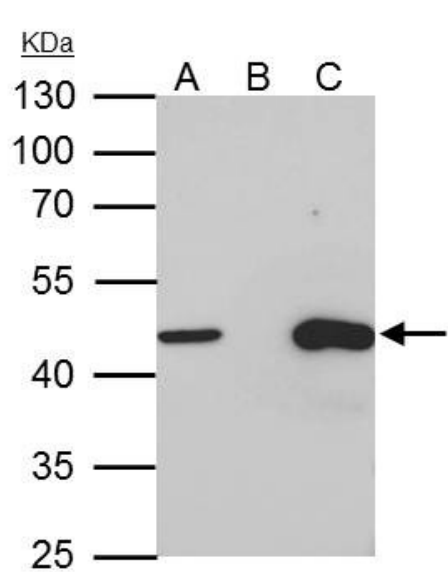
Product Images For TUFM Polyclonal Antibody



TUFM Antibody (PA5-27511) in IHC (P)
TUFM Polyclonal Antibody detects TUFM protein at mitochondria on mouse duodenum by immunohistochemical analysis. Sample: Paraffin-embedded mouse duodenum. TUFM Polyclonal Antibody (Product # PA5-27511) dilution: 1:500. Antigen Retrieval: EDTA based buffer, pH 8.0, 15 min.



TUFM Antibody (PA5-27511) in IHC (P)
TUFM Polyclonal Antibody detects TUFM protein at mitochondria on H441 xenograft by immunohistochemical analysis. Sample: Paraffin-embedded H441 xenograft. TUFM Polyclonal Antibody (Product # PA5-27511) dilution: 1:250. Antigen Retrieval: EDTA based buffer, pH 8.0, 15 min.



TUFM Antibody (PA5-27511) in IP
TUFM Polyclonal Antibody immunoprecipitates TUFM protein in IP experiments. IP samples: HepG2 whole cell extract. A. 35 µg HepG2 whole cell extract. B. Control with 4 µg of preimmune Rabbit IgG. C. Immunoprecipitation of TUFM protein by 4 µg TUFM Polyclonal Antibody (Product # PA5-27511). 10 % SDS-PAGE. The immunoprecipitated TUFM protein was detected by TUFM Polyclonal Antibody (Product # PA5-27511) diluted at 1:1,000.

View more figures on thermofisher.com

Western Blot (2)

ACS chemical biology

Mitochondrial Protease ClpP is a Target for the Anticancer Compounds ONC201 and Related Analogues.

"PA5-27511 was used in Western Blotting to show human mitochondrial caseinolytic protease P directly binds directly to imipridone molecule ONC201 and analogues."

Authors: Graves PR, Aponte-Collazo LJ, Fennell EMJ, Graves AC, Hale AE, Dicheva N, Herring LE, Gilbert TSK, East MP, McDonald IM, Lockett MR, Ashamalla H, Moorman NJ, Karanewsky DS, Iwanowicz EJ, Holmuhamedov E, Graves LM

Year
2019

Species
Human

Dilution
1:1000

Scientific reports

Novel compound mutations in the mitochondrial translation elongation factor (TSFM) gene cause severe cardiomyopathy with myocardial fibro-adipose replacement.

"PA5-27511 was used in Western Blotting to report an unusual presentation of mitochondrial cardiomyopathy, with dilated phenotype and pathologic evidence of biventricular fibro-adipose replacement, in a 33-year old woman who underwent cardiac transplant."

Authors: Perli E, Pisano A, Glasgow RIC, Carbo M, Hardy SA, Falkous G, He L, Cerbelli B, Pignataro MG, Zacara E, Re F, Della Monica PL, Morea V, Bonnen PE, Taylor RW, d'Amati G, Giordano C

Year
2019

Species
Human

For Research Use Only. Not for use in diagnostic procedures. Not for resale without express authorization. Products are warranted to operate or perform substantially in conformance with published Product specifications in effect at the time of sale, as set forth in the Production documentation, specifications and/or accompanying package inserts ("Documentation"). No claim of suitability for use in applications regulated by FDA is made. The warranty provided herein is valid only when used by properly trained individuals. Unless otherwise stated in the Documentation, this warranty is limited to one year from date of shipment when the Product is subjected to normal, proper and intended usage. This warranty does not extend to anyone other than the Buyer. Any model or sample furnished to Buyer is merely illustrative of the general type and quality of goods and does not represent that any Product will conform to such model or sample. NO OTHER WARRANTIES, EXPRESS OR IMPLIED, ARE GRANTED INCLUDING WITHOUT LIMITATION, IMPLIED WARRANTIES OF MERCHANTABILITY, FITNESS FOR ANY PARTICULAR PURPOSE, OR NON-INFRINGEMENT. BUYER'S EXCLUSIVE REMEDY FOR NON-CONFORMING PRODUCTS DURING THE WARRANTY PERIOD IS LIMITED TO REPAIR, REPLACEMENT OF OR REFUND FOR THE NON-CONFORMING PRODUCT(S) AT SELLER'S SOLE OPTION. THERE IS NO OBLIGATION TO REPAIR, REPLACE OR REFUND FOR PRODUCTS AS THE RESULT OF (i) ACCIDENT, DISASTER OR EVENT OF FORCE MAJEURE, (ii) MISUSE, FAULT OR NEGLIGENCE OF OR BY BUYER, (iii) USE OF THE PRODUCTS IN A MANNER FOR WHICH THEY WERE NOT DESIGNED, OR (iv) IMPROPER STORAGE AND HANDLING OF THE PRODUCTS. Unless otherwise expressly stated on the Product or in the documentation accompanying the Product, the Product is intended for research only and is not to be used for any other purpose, including without limitation, unauthorized commercial uses, in vitro diagnostic uses, ex vivo or in vivo therapeutic uses, or any type of consumption by or application to human or animals.