

beta Tubulin 2 Polyclonal Antibody

Product Details	
Size	100 µL
Species Reactivity	Human, Mouse, Non-human primate, Rat
Published Species	Human
Host/Isotype	Rabbit / IgG
Class	Polyclonal
Type	Antibody
Conjugate	Unconjugated
Immunogen	Recombinant fragment corresponding to a region within amino acids 1 and 237 of Human beta Tubulin 2
Form	Liquid
Concentration	1 mg/mL
Purification	Antigen affinity chromatography
Storage buffer	PBS, pH 7, with 1% BSA, 20% glycerol
Contains	0.01% thimerosal
Storage conditions	Store at 4°C short term. For long term storage, store at -20°C, avoiding freeze/thaw cycles.
RRID	AB_2545028

Applications	Tested Dilution	Publications
Western Blot (WB)	1:1,000-1:10,000	1 Publication
Immunohistochemistry (Paraffin) (IHC (P))	1:100-1:1,000	-
Immunocytochemistry (ICC/IF)	1:100-1:1,000	-

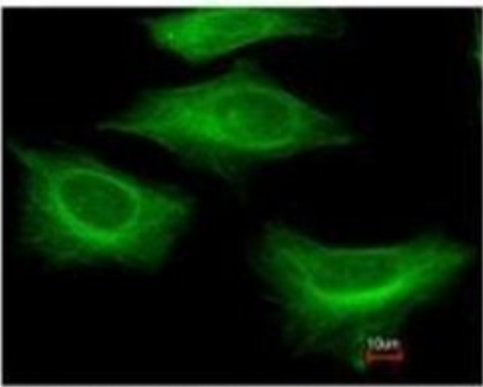
Product Specific Information

Recommended positive controls: 293T, A431, Jurkat, Raji, NIH-3T3, mouse brain.

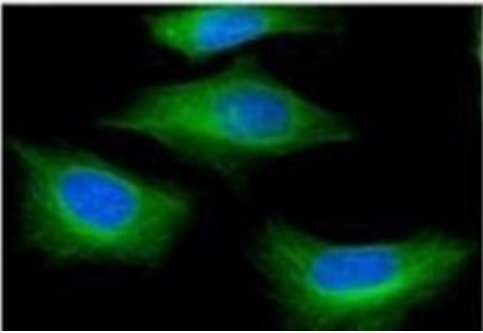
Predicted reactivity: Mouse (100%), Rat (100%).

Store product as a concentrated solution. Centrifuge briefly prior to opening the vial.

Product Images For beta Tubulin 2 Polyclonal Antibody

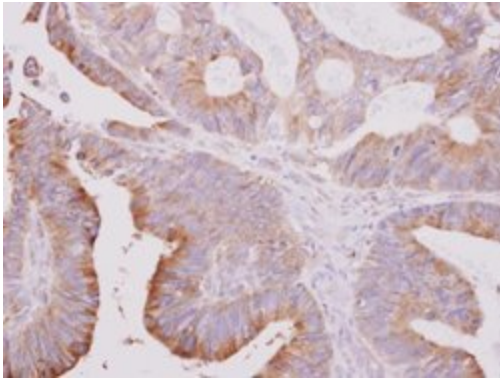


Costained with Hoechst 33342



beta Tubulin 2 Antibody (PA5-27552) in ICC/IF

Immunofluorescent analysis of beta Tubulin 2 in paraformaldehyde-fixed HeLa cells using a beta Tubulin 2 polyclonal antibody (Product # PA5-27552) at a 1:200 dilution.

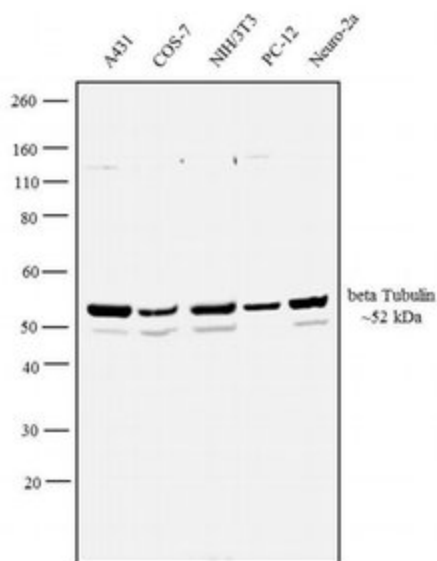


beta Tubulin 2 Antibody (PA5-27552) in IHC (P)

Immunohistochemical analysis of beta Tubulin 2 in the cytoplasm of paraffin-embedded colon carcinoma using a beta Tubulin 2 polyclonal antibody (Product # PA5-27552) at a dilution of 1:500.

beta Tubulin 2 Antibody (PA5-27552) in WB

Western blot analysis was performed on whole cell extracts (30 µg lysate) of A-431 (Lane 1), COS-7 (Lane 2), NIH/3T3 (Lane 3), PC-12 (Lane 4) and Neuro-2a (Lane 5). The blot was probed with Anti-beta Tubulin 2 Rabbit Polyclonal Antibody (Product # A27036, 1:4000 dilution) and detected by chemiluminescence using Goat anti-Rabbit IgG (H+L) Superclonal™ Secondary Antibody, HRP conjugate (Product # A27036, 0.25 µg/mL, 1:4000 dilution). A 52 kDa band corresponding to beta Tubulin 2 was observed across the cell lines tested. Known quantity of protein samples were electrophoresed using Novex® NuPAGE® 4-12 % Bis-Tris gel (Product # NP0322BOX), XCell SureLock™ Electrophoresis System (Product # EI0002) and Novex® Sharp Pre-Stained Protein Standard (Product # LC5800). Resolved proteins were then transferred onto a nitrocellulose membrane with iBlot® 2 Dry Blotting System (Product # IB21001). The membrane was probed with the relevant primary and secondary Antibody following blocking with 5 % skimmed milk. Chemiluminescent detection was performed using Pierce™ ECL Western Blotting Substrate (Product # 32106).



[View more figures on thermofisher.com](#)

1 Reference

Western Blot (1)

The Journal of biological chemistry

Most mutations that cause spinocerebellar ataxia autosomal recessive type 16 (SCAR16) destabilize the protein quality-control E3 ligase CHIP.

"PA5-27552 was used in Western Blotting to report on the molecular basis of genetic defects in CHIP function that cause spinocerebellar ataxia autosomal recessive type 16."

Authors: Kanack AJ, Newsom OJ, Scaglione KM

Species
Human

Dilution
Not Cited

Year
2018

For Research Use Only. Not for use in diagnostic procedures. Not for resale without express authorization. Products are warranted to operate or perform substantially in conformance with published Product specifications in effect at the time of sale, as set forth in the Production documentation, specifications and/or accompanying package inserts ("Documentation"). No claim of suitability for use in applications regulated by FDA is made. The warranty provided herein is valid only when used by properly trained individuals. Unless otherwise stated in the Documentation, this warranty is limited to one year from date of shipment when the Product is subjected to normal, proper and intended usage. This warranty does not extend to anyone other than the Buyer. Any model or sample furnished to Buyer is merely illustrative of the general type and quality of goods and does not represent that any Product will conform to such model or sample. NO OTHER WARRANTIES, EXPRESS OR IMPLIED, ARE GRANTED INCLUDING WITHOUT LIMITATION, IMPLIED WARRANTIES OF MERCHANTABILITY, FITNESS FOR ANY PARTICULAR PURPOSE, OR NON INFRINGEMENT. BUYER'S EXCLUSIVE REMEDY FOR NON-CONFORMING PRODUCTS DURING THE WARRANTY PERIOD IS LIMITED TO REPAIR, REPLACEMENT OF OR REFUND FOR THE NON-CONFORMING PRODUCT(S) AT SELLER'S SOLE OPTION. THERE IS NO OBLIGATION TO REPAIR, REPLACE OR REFUND FOR PRODUCTS AS THE RESULT OF (I) ACCIDENT, DISASTER OR EVENT OF FORCE MAJEURE, (II) MISUSE, FAULT OR NEGLIGENCE OF OR BY BUYER, (III) USE OF THE PRODUCTS IN A MANNER FOR WHICH THEY WERE NOT DESIGNED, OR (IV) IMPROPER STORAGE AND HANDLING OF THE PRODUCTS. Unless otherwise expressly stated on the Product or in the documentation accompanying the Product, the Product is intended for research only and is not to be used for any other purpose, including without limitation, unauthorized commercial uses, in vitro diagnostic uses, ex vivo or in vivo therapeutic uses, or any type of consumption by or application to human or animals.