

# CD2AP Polyclonal Antibody

Product Details	
Size	100 µL
Species Reactivity	Human, Mouse, Rat
Host/Isotype	Rabbit / IgG
Class	Polyclonal
Type	Antibody
Conjugate	Unconjugated
Immunogen	Recombinant fragment corresponding to a region within amino acids 1 and 281 of Human CD2AP
Form	Liquid
Concentration	0.17 mg/mL
Purification	Antigen affinity chromatography
Storage buffer	PBS, pH 7, with 1% BSA, 20% glycerol
Contains	0.025% ProClin 300
Storage conditions	Store at 4°C short term. For long term storage, store at -20°C, avoiding freeze/thaw cycles.
RRID	AB_2545867

Applications	Tested Dilution	Publications
Western Blot (WB)	1:500-1:3,000	1 Publication
Immunohistochemistry (Paraffin) (IHC (P))	1:100-1:1,000	-
Immunocytochemistry (ICC/IF)	1:100-1:1,000	1 Publication

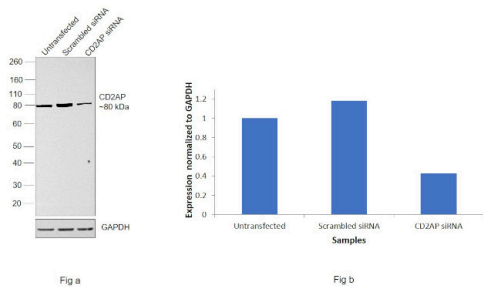
## Product Specific Information

Recommended positive controls: 293T, A431, HeLa, HepG2, A375, Rat2, K562, THP-1, HL-60.

Predicted reactivity: Mouse (87%), Rat (86%), Pig (92%), Rhesus Monkey (96%), Bovine (90%).

Store product as a concentrated solution. Centrifuge briefly prior to opening the vial.

## Product Images For CD2AP Polyclonal Antibody

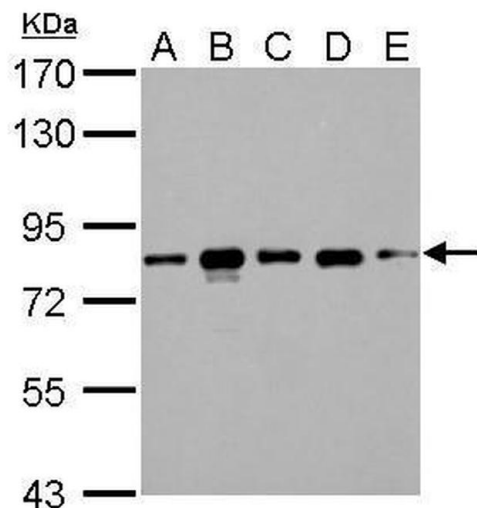


### CD2AP Antibody (PA5-28391)

Antibody specificity was demonstrated by siRNA mediated knockdown of the target protein. A-431 cells were transfected with CD2-associated protein siRNA and a decrease in signal intensity was observed in Western Blot application using Anti-CD2AP Polyclonal Antibody (Product # PA5-28391). {KD}

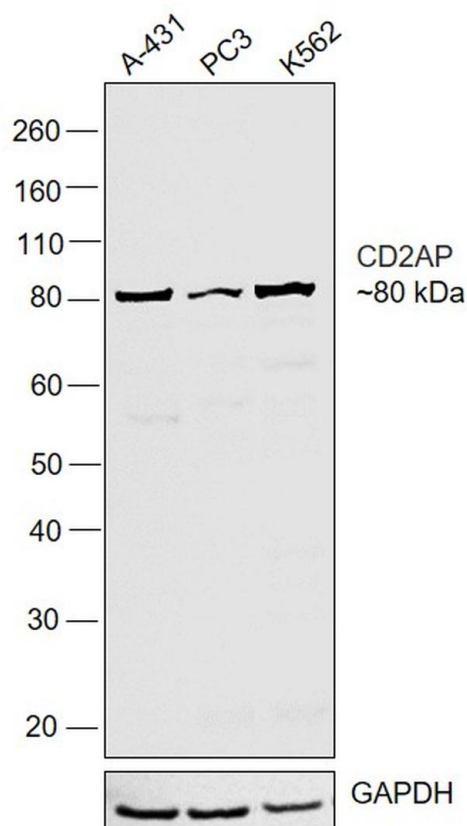
### CD2AP Antibody (PA5-28391) in WB

CD2AP Polyclonal Antibody detects CD2AP protein by western blot analysis. A. 30 µg 293T whole cell lysate/extract. B. 30 µg A431 whole cell lysate/extract. C. 30 µg HeLa whole cell lysate/extract. D. 30 µg HepG2 whole cell lysate/extract. E. 30 µg A375 whole cell lysate/extract. 7.5% SDS-PAGE. CD2AP Polyclonal Antibody (Product # PA5-28391) dilution: 1:1,000. The HRP-conjugated anti-rabbit IgG antibody was used to detect the primary antibody.



### CD2AP Antibody (PA5-28391) in WB

Western Blot was performed using Anti-CD2AP Polyclonal Antibody (Product # PA5-28391) and a 80 kDa band corresponding to CD2-associated protein was observed across cell lines tested. Whole-cell extracts (30 µg lysate) of A-431 (Lane 1), PC-3 (Lane 2) and K-562 (Lane 3) were electrophoresed using NuPAGE™ 4-12% Bis-Tris Protein Gel (Product # NP0321BOX). Resolved proteins were then transferred onto a Nitrocellulose membrane (Product # IB23001) by iBlot® 2 Dry Blotting System (Product # IB21001). The Blot was probed with the primary antibody (1:1000 dilution) and detected by chemiluminescence with Goat anti-Rabbit IgG (Heavy Chain) Superclonal™ Recombinant Secondary Antibody, HRP (Product # A27036, 1:4000 dilution) using the iBright FL 1000 (Product # A32752). Chemiluminescent detection was performed using Novex® ECL Chemiluminescent Substrate Reagent Kit (Product # WP20005).



2 References

Western Blot (1)

Translational neurodegeneration	Year 2020
<b>Upregulation of RIN3 induces endosomal dysfunction in Alzheimer's disease.</b>	
"Published figure using CD2AP polyclonal antibody (Product # PA5-28391) in Immunocytochemistry"	
Authors: Shen R,Zhao X,He L,Ding Y,Xu W,Lin S,Fang S,Yang W,Sung K,Spencer B,Rissman RA,Lei M,Ding J,Wu C	

Immunocytochemistry (1)

Translational neurodegeneration	Year 2020
<b>Upregulation of RIN3 induces endosomal dysfunction in Alzheimer's disease.</b>	
"Published figure using CD2AP polyclonal antibody (Product # PA5-28391) in Immunocytochemistry"	
Authors: Shen R,Zhao X,He L,Ding Y,Xu W,Lin S,Fang S,Yang W,Sung K,Spencer B,Rissman RA,Lei M,Ding J,Wu C	

For Research Use Only. Not for use in diagnostic procedures. Not for resale without express authorization. Products are warranted to operate or perform substantially in conformance with published Product specifications in effect at the time of sale, as set forth in the Production documentation, specifications and/or accompanying package inserts ("Documentation"). No claim of suitability for use in applications regulated by FDA is made. The warranty provided herein is valid only when used by properly trained individuals. Unless otherwise stated in the Documentation, this warranty is limited to one year from date of shipment when the Product is subjected to normal, proper and intended usage. This warranty does not extend to anyone other than the Buyer. Any model or sample furnished to Buyer is merely illustrative of the general type and quality of goods and does not represent that any Product will conform to such model or sample. NO OTHER WARRANTIES, EXPRESS OR IMPLIED, ARE GRANTED INCLUDING WITHOUT LIMITATION, IMPLIED WARRANTIES OF MERCHANTABILITY, FITNESS FOR ANY PARTICULAR PURPOSE, OR NON INFRINGEMENT. BUYER'S EXCLUSIVE REMEDY FOR NON-CONFORMING PRODUCTS DURING THE WARRANTY PERIOD IS LIMITED TO REPAIR, REPLACEMENT OF OR REFUND FOR THE NON-CONFORMING PRODUCT(S) AT SELLER'S SOLE OPTION. THERE IS NO OBLIGATION TO REPAIR, REPLACE OR REFUND FOR PRODUCTS AS THE RESULT OF (I) ACCIDENT, DISASTER OR EVENT OF FORCE MAJEURE, (II) MISUSE, FAULT OR NEGLIGENCE OF OR BY BUYER, (III) USE OF THE PRODUCTS IN A MANNER FOR WHICH THEY WERE NOT DESIGNED, OR (IV) IMPROPER STORAGE AND HANDLING OF THE PRODUCTS. Unless otherwise expressly stated on the Product or in the documentation accompanying the Product, the Product is intended for research only and is not to be used for any other purpose, including without limitation, unauthorized commercial uses, in vitro diagnostic uses, ex vivo or in vivo therapeutic uses, or any type of consumption by or application to human or animals.