

eRF1 Polyclonal Antibody

| Product Details | |
|--------------------|--|
| Size | 100 µL |
| Species Reactivity | Human, Mouse |
| Host/Isotope | Rabbit / IgG |
| Class | Polyclonal |
| Type | Antibody |
| Conjugate | Unconjugated |
| Immunogen | Synthetic peptide corresponding to a region within amino acids 374 and 437 of eRF1 |
| Form | Liquid |
| Concentration | 0.91 mg/mL |
| Purification | Antigen affinity chromatography |
| Storage buffer | 0.1M tris glycine, pH 7, with 10% glycerol |
| Contains | 0.01% thimerosal |
| Storage Conditions | Store at 4°C short term. For long term storage, store at -20°C, avoiding freeze/thaw cycles. |
| RRID | AB_2546253 |

| Applications | Tested | Dilution | Published |
|---|--------|--------------|-----------|
| Immunocytochemistry (ICC) | ✓ | 1:100-1:1000 | |
| Immunofluorescence (IF) | ✓ | 1:100-1:1000 | |
| Immunohistochemistry (Paraffin) (IHC (P)) | ✓ | 1:100-1:1000 | |
| Western Blot (WB) | ✓ | 1:500-1:3000 | |

Product Specific Information

PA5-28777 targets eRF1 in IF, IHC (P), and WB applications and shows reactivity with Human samples.

The PA5-28777 immunogen is a synthetic peptide corresponding to a region within amino acids 374 and 437 of eRF1.

Store product as a concentrated solution. Centrifuge briefly prior to opening the vial. For short-term storage (1-2 weeks), product can be stored at 4°C. For long-term storage, aliquot and store product at -20° C or below, avoiding multiple freeze-thaw cycles.

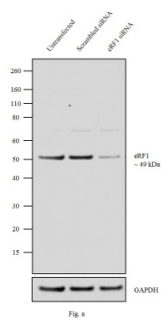


Fig. 4

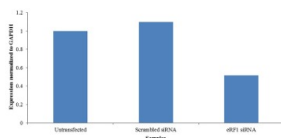
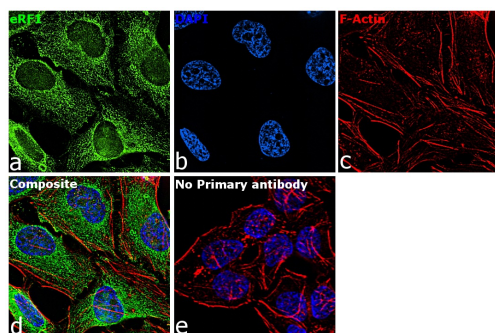


Fig. 5

eRF1 Antibody (PA5-28777)

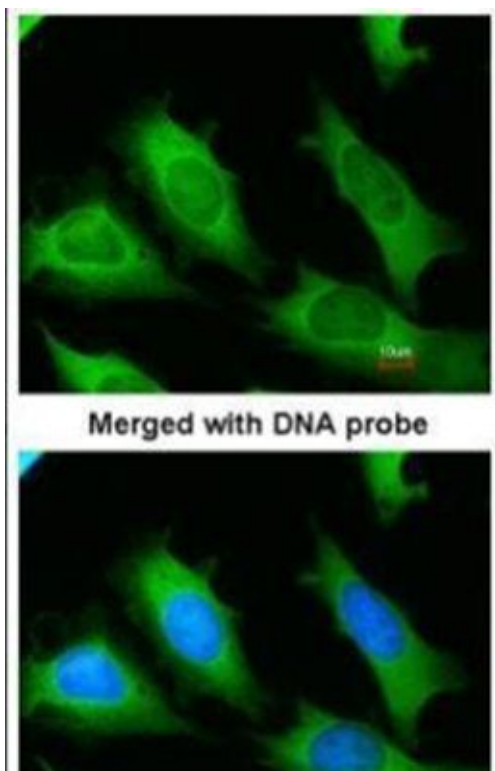
Antibody specificity was demonstrated by siRNA mediated knockdown of target protein. HeLa cells were transfected with eRF1 siRNA and reduction of signal was observed in Western Blot using eRF1 Polyclonal Antibody (Product # PA5-28777). KnockDown validation info.

Product Images For eRF1 Polyclonal Antibody



eRF1 Antibody (PA5-28777) in IF

Immunofluorescence analysis of eRF1 was performed using 70% confluent log phase HeLa cells. The cells were fixed with 4% paraformaldehyde for 10 minutes, permeabilized with 0.1% Triton™ X-100 for 15 minutes, and blocked with 1% BSA for 1 hour at room temperature. The cells were labeled with eRF1 Rabbit Polyclonal Antibody (Product # PA5-28777) at 5 microgram/mL in 0.1% BSA, incubated at 4 degree Celsius overnight and then labeled with Goat anti-Rabbit IgG (H+L) Superclonal™ Secondary Antibody, Alexa Fluor® 488 conjugate (Product # A27034) at a dilution of 1:2000 for 45 minutes at room temperature (Panel a: green). Nuclei (Panel b: blue) were stained with ProLong™ Diamond Antifade Mountant with DAPI (Product # P36962). F-actin (Panel c: red) was stained with Rhodamine Phalloidin (Product # R415, 1:300). Panel d represents the merged image showing Cytoplasmic localization. Panel e represents control cells with no primary antibody to assess background. The images were captured at 60X magnification.



eRF1 Antibody (PA5-28777) in IF

Immunofluorescent analysis of eRF1 in paraformaldehyde-fixed HeLa cells using an eRF1 polyclonal antibody (Product # PA5-28777) at a 1:200 dilution.

View more figures on thermofisher.com

For Research Use Only. Not for use in diagnostic procedures. Not for resale without express authorization. Products are warranted to operate or perform substantially in conformance with published Product specifications in effect at the time of sale, as set forth in the Production documentation, specifications and/or accompanying package inserts ("Documentation"). No claim of suitability for use in applications regulated by FDA is made. The warranty provided herein is valid only when used by properly trained individuals. Unless otherwise stated in the Documentation, this warranty is limited to one year from date of shipment when the Product is subjected to normal, proper and intended usage. This warranty does not extend to anyone other than the Buyer. Any model or sample furnished to Buyer is merely illustrative of the general type and quality of goods and does not represent that any Product will conform to such model or sample. NO OTHER WARRANTIES, EXPRESS OR IMPLIED, ARE GRANTED INCLUDING WITHOUT LIMITATION, IMPLIED WARRANTIES OF MERCHANTABILITY, FITNESS FOR ANY PARTICULAR PURPOSE, OR NON INFRINGEMENT. BUYER'S EXCLUSIVE REMEDY FOR NON-CONFORMING PRODUCTS DURING THE WARRANTY PERIOD IS LIMITED TO REPAIR, REPLACEMENT OF OR REFUND FOR THE NON-CONFORMING PRODUCT(S) AT SELLER'S SOLE OPTION. THERE IS NO OBLIGATION TO REPAIR, REPLACE OR REFUND FOR PRODUCTS AS THE RESULT OF (I) ACCIDENT, DISASTER OR EVENT OF FORCE MAJEURE, (II) MISUSE, FAULT OR NEGLIGENCE OF OR BY BUYER, (III) USE OF THE PRODUCTS IN A MANNER FOR WHICH THEY WERE NOT DESIGNED, OR (IV) IMPROPER STORAGE AND HANDLING OF THE PRODUCTS. Unless otherwise expressly stated on the Product or in the documentation accompanying the Product, the Product is intended for research only and is not to be used for any other purpose, including without limitation, unauthorized commercial uses, in vitro diagnostic uses, ex vivo or in vivo therapeutic uses, or any type of consumption by or application to human or animals.