

CXCL13 Polyclonal Antibody

| Product Details | |
|--------------------|--|
| Size | 100 µL |
| Species Reactivity | Human |
| Published Species | Human |
| Host/Isotype | Rabbit / IgG |
| Class | Polyclonal |
| Type | Antibody |
| Conjugate | Unconjugated |
| Immunogen | Synthetic peptide corresponding to a region within amino acids 45 and 109 of Human BCA1 |
| Form | Liquid |
| Concentration | 1.31 mg/mL |
| Purification | Antigen affinity chromatography |
| Storage buffer | PBS, pH 7, with 20% glycerol |
| Contains | 0.025% ProClin 300 |
| Storage conditions | Store at 4°C short term. For long term storage, store at -20°C, avoiding freeze/thaw cycles. |
| RRID | AB_2546303 |

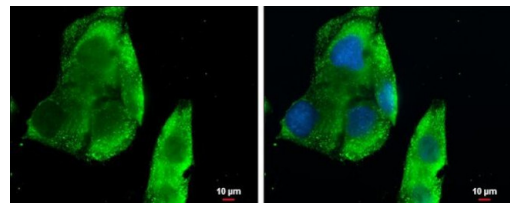
| Applications | Tested Dilution | Publications |
|---|------------------|----------------|
| Western Blot (WB) | 1:1,000-1:10,000 | - |
| Immunohistochemistry (IHC) | - | 2 Publications |
| Immunohistochemistry (Paraffin) (IHC (P)) | 1:100-1:1,000 | - |
| Immunocytochemistry (ICC/IF) | 1:100-1:1,000 | - |

Product Specific Information

Recommended positive controls: CXCL13-transfected 293T.

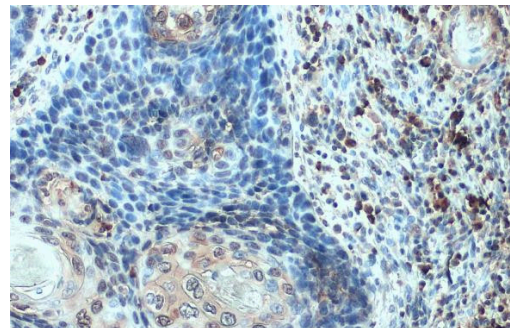
Store product as a concentrated solution. Centrifuge briefly prior to opening the vial.

Product Images For CXCL13 Polyclonal Antibody



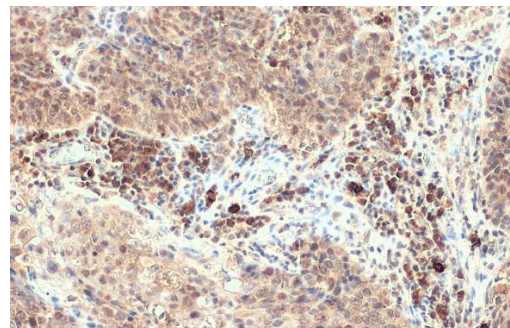
CXCL13 Antibody (PA5-28827) in ICC/IF

Immunocytochemistry-Immunofluorescence analysis of CXCL13 was performed in HepG2 cells fixed in 4% paraformaldehyde at RT for 15 min. Green: CXCL13 Polyclonal Antibody (Product # PA5-28827) diluted at 1:500. Blue: Hoechst 33342 staining. Scale bar = 10 µm.



CXCL13 Antibody (PA5-28827) in IHC (P)

CXCL13 Polyclonal Antibody detects BCA1 protein at cell membrane and cytoplasm by immunohistochemical analysis. Sample: Paraffin-embedded human esophageal carcinoma. BCA1 stained by CXCL13 Polyclonal Antibody (Product # PA5-28827) diluted at 1:100. Antigen Retrieval: Citrate buffer, pH 6.0, 15 min.



CXCL13 Antibody (PA5-28827) in IHC (P)

CXCL13 Polyclonal Antibody detects BCA1 protein at cytoplasm by immunohistochemical analysis. Sample: Paraffin-embedded human esophageal carcinoma. BCA1 stained by CXCL13 Polyclonal Antibody (Product # PA5-28827) diluted at 1:500. Antigen Retrieval: Citrate buffer, pH 6.0, 15 min.

[View more figures on thermofisher.com](#)

Immunohistochemistry (2)

| | |
|---|--------------------|
| Immunology | Year 2023 |
| Single-cell landscape and clinical outcomes of infiltrating B cells in colorectal cancer. | |
| "Published figure using CXCL13 polyclonal antibody (Product # PA5-28827) in Immunohistochemistry" | |
| Authors: Xia J,Xie Z,Niu G,Lu Z,Wang Z,Xing Y,Ren J,Hu Z,Hong R,Cao Z,Han S,Chu Y,Liu R,Ke C | |
| Oncoimmunology | Year 2021 |
| Poor clinical outcomes and immunoevasive contexture in CXCL13+CD8+ T cells enriched gastric cancer patients. | Species Human |
| "PA5-28827 was used in Immunohistochemistry to demonstrate that intratumoral CXCL13+CD8+ T cells infiltration could be an independent prognostic and predictive marker for gastric cancer patients, and might be a potential immunotherapeutic target in gastric cancer." | Dilution 1:1000 |
| Authors: Jin K,Cao Y,Gu Y,Fang H,Fei Y,Wang J,Liu X,Lv K,He X,Lin C,Liu H,Li H,He H,Li R,Zhang H,Xu J | |

For Research Use Only. Not for use in diagnostic procedures. Not for resale without express authorization. Products are warranted to operate or perform substantially in conformance with published Product specifications in effect at the time of sale, as set forth in the Production documentation, specifications and/or accompanying package inserts ("Documentation"). No claim of suitability for use in applications regulated by FDA is made. The warranty provided herein is valid only when used by properly trained individuals. Unless otherwise stated in the Documentation, this warranty is limited to one year from date of shipment when the Product is subjected to normal, proper and intended usage. This warranty does not extend to anyone other than the Buyer. Any model or sample furnished to Buyer is merely illustrative of the general type and quality of goods and does not represent that any Product will conform to such model or sample. NO OTHER WARRANTIES, EXPRESS OR IMPLIED, ARE GRANTED INCLUDING WITHOUT LIMITATION, IMPLIED WARRANTIES OF MERCHANTABILITY, FITNESS FOR ANY PARTICULAR PURPOSE, OR NON INFRINGEMENT. BUYER'S EXCLUSIVE REMEDY FOR NON-CONFORMING PRODUCTS DURING THE WARRANTY PERIOD IS LIMITED TO REPAIR, REPLACEMENT OF OR REFUND FOR THE NON-CONFORMING PRODUCT(S) AT SELLER'S SOLE OPTION. THERE IS NO OBLIGATION TO REPAIR, REPLACE OR REFUND FOR PRODUCTS AS THE RESULT OF (I) ACCIDENT, DISASTER OR EVENT OF FORCE MAJEURE, (II) MISUSE, FAULT OR NEGLIGENCE OF OR BY BUYER, (III) USE OF THE PRODUCTS IN A MANNER FOR WHICH THEY WERE NOT DESIGNED, OR (IV) IMPROPER STORAGE AND HANDLING OF THE PRODUCTS. Unless otherwise expressly stated on the Product or in the documentation accompanying the Product, the Product is intended for research only and is not to be used for any other purpose, including without limitation, unauthorized commercial uses, in vitro diagnostic uses, ex vivo or in vivo therapeutic uses, or any type of consumption by or application to human or animals.