

# Dynamin 2 Polyclonal Antibody

| Product Details    |   |
|--------------------|---|
| Size               | 100 µL  |
| Species Reactivity | Human, Mouse  |
| Host/Isotype       | Rabbit / IgG  |
| Class              | Polyclonal  |
| Type               | Antibody  |
| Conjugate          | Unconjugated  |
| Immunogen          | Synthetic peptide corresponding to a region within amino acids 714 and 813 of Human Dynamin 2 |
| Form               | Liquid  |
| Concentration      | 0.44 mg/mL  |
| Purification       | Antigen affinity chromatography   |
| Storage buffer     | 0.1M tris glycine, pH 7, with 10% glycerol  |
| Contains           | 0.01% thimerosal  |
| Storage conditions | Store at 4°C short term. For long term storage, store at -20°C, avoiding freeze/thaw cycles.  |
| RRID               | AB_2546493  |

| Applications                              | Tested Dilution | Publications |
|---|-----------------|--------------|
| Western Blot (WB)                         | 1:500-1:3,000   | -            |
| Immunohistochemistry (Paraffin) (IHC (P)) | 1:100-1:1,000   | -            |
| Immunocytochemistry (ICC/IF)              | 1:100-1:1,000   | -            |

## Product Specific Information

Recommended positive controls: Molt-4, Raji.

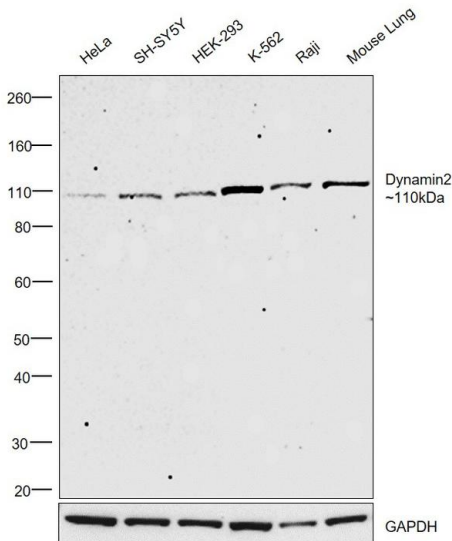
Predicted reactivity: Rhesus Monkey (100%).

Store product as a concentrated solution. Centrifuge briefly prior to opening the vial.

## Product Images For Dynamin 2 Polyclonal Antibody

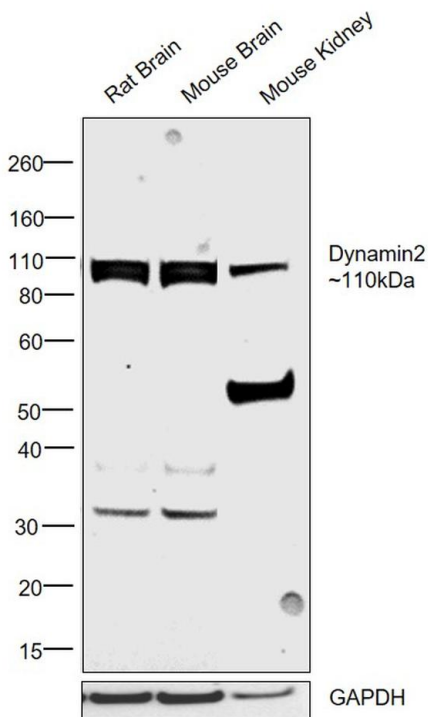
### Dynamin 2 Antibody (PA5-29017) in WB

Western blot was performed using Anti-Dynamin 2 Polyclonal Antibody (Product # PA5-29017) and a 110kDa band corresponding to Dynamin 2 was observed across all cell lines and tissues tested. Whole cell extracts (30 µg lysate) of HeLa (Lane 1), SH-SY5Y (Lane 2), HEK-293 (Lane 3), K-562 (Lane 4), Raji (Lane 5) and Mouse Lung (Lane 6) were electrophoresed using Novex® NuPAGE® 4-12 % Bis-Tris gel (Product # NP0322BOX). Resolved proteins were then transferred onto a nitrocellulose membrane (Product # IB23001) by iBlot® 2 Dry Blotting System (Product # IB21001). The blot was probed with the primary antibody (1:1000 dilution) and detected by chemiluminescence Goat anti-Rabbit IgG (Heavy Chain), Superclonal™ Recombinant Secondary Antibody, HRP (Product # A27036, 1:4000 dilution) using the iBright FL 1000 (Product # A32752). Chemiluminescent detection was performed using Novex® ECL Chemiluminescent Substrate Reagent Kit (Product # WP20005).



### Dynamin 2 Antibody (PA5-29017) in WB

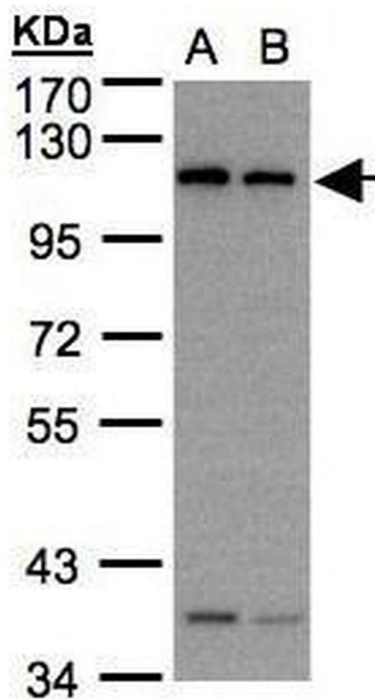
Western blot was performed using Anti-Dynamin 2 Polyclonal Antibody (Product # PA5-29017) and a 110kDa band corresponding to Dynamin 2 was observed across all tissues tested along with certain uncharacterized bands at ~35, ~55 kDa. Tissue extracts (50 µg lysate) of Rat Brain (Lane 1), Mouse Brain (Lane 2) and Mouse Kidney (Lane 3) were electrophoresed using Novex® NuPAGE® 4-12 % Bis-Tris gel (Product # NP0322BOX). Resolved proteins were then transferred onto a nitrocellulose membrane (Product # IB23001) by iBlot® 2 Dry Blotting System (Product # IB21001). The blot was probed with the primary antibody (1:1000 dilution) and detected by chemiluminescence with Goat anti-Rabbit IgG (Heavy Chain), Superclonal™ Recombinant Secondary Antibody, HRP (Product # A27036, 1:4000 dilution) using the iBright FL 1000 (Product # A32752). Chemiluminescent detection was performed using Novex® ECL Chemiluminescent Substrate Reagent Kit (Product # WP20005).



### Dynamin 2 Antibody (PA5-29017) in WB

Western Blot using Dynamin 2 Polyclonal Antibody (Product # PA5-29017).

Sample (30 µg whole cell lysate). A: MOLT4. B: Raji. 7.5% SDS PAGE. Dynamin 2 Polyclonal Antibody (Product # PA5-29017) diluted at 1:1,000.



[View more figures on thermofisher.com](https://www.thermofisher.com)

For Research Use Only. Not for use in diagnostic procedures. Not for resale without express authorization. Products are warranted to operate or perform substantially in conformance with published Product specifications in effect at the time of sale, as set forth in the Production documentation, specifications and/or accompanying package inserts ("Documentation"). No claim of suitability for use in applications regulated by FDA is made. The warranty provided herein is valid only when used by properly trained individuals. Unless otherwise stated in the Documentation, this warranty is limited to one year from date of shipment when the Product is subjected to normal, proper and intended usage. This warranty does not extend to anyone other than the Buyer. Any model or sample furnished to Buyer is merely illustrative of the general type and quality of goods and does not represent that any Product will conform to such model or sample. NO OTHER WARRANTIES, EXPRESS OR IMPLIED, ARE GRANTED INCLUDING WITHOUT LIMITATION, IMPLIED WARRANTIES OF MERCHANTABILITY, FITNESS FOR ANY PARTICULAR PURPOSE, OR NON INFRINGEMENT. BUYER'S EXCLUSIVE REMEDY FOR NON-CONFORMING PRODUCTS DURING THE WARRANTY PERIOD IS LIMITED TO REPAIR, REPLACEMENT OF OR REFUND FOR THE NON-CONFORMING PRODUCT(S) AT SELLER'S SOLE OPTION. THERE IS NO OBLIGATION TO REPAIR, REPLACE OR REFUND FOR PRODUCTS AS THE RESULT OF (I) ACCIDENT, DISASTER OR EVENT OF FORCE MAJEURE, (II) MISUSE, FAULT OR NEGLIGENCE OF OR BY BUYER, (III) USE OF THE PRODUCTS IN A MANNER FOR WHICH THEY WERE NOT DESIGNED, OR (IV) IMPROPER STORAGE AND HANDLING OF THE PRODUCTS. Unless otherwise expressly stated on the Product or in the documentation accompanying the Product, the Product is intended for research only and is not to be used for any other purpose, including without limitation, unauthorized commercial uses, in vitro diagnostic uses, ex vivo or in vivo therapeutic uses, or any type of consumption by or application to human or animals.