

CTH Polyclonal Antibody

Product Details	
Size	100 µL
Species Reactivity	Human, Mouse, Rat
Published Species	Human
Host/Isotype	Rabbit / IgG
Class	Polyclonal
Type	Antibody
Conjugate	Unconjugated
Immunogen	Recombinant fragment corresponding to a region within amino acids 194 and 405 of Human CTH
Form	Liquid
Concentration	1.02 mg/mL
Purification	Antigen affinity chromatography
Storage buffer	PBS, pH 7, with 20% glycerol
Contains	0.025% ProClin 300
Storage conditions	Store at 4°C short term. For long term storage, store at -20°C, avoiding freeze/thaw cycles.
RRID	AB_2547199

Applications	Tested Dilution	Publications
Western Blot (WB)	1:500-1:3,000	2 Publications
Immunohistochemistry (Paraffin) (IHC (P))	1:100-1:1,000	-

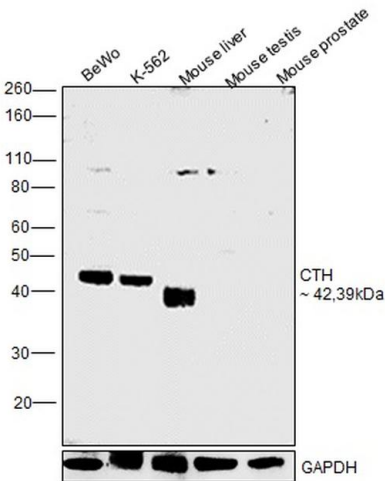
Product Specific Information

Recommended positive controls: 293T, A431, HeLa, HepG2, mouse liver, rat liver.

Predicted reactivity: Mouse (84%), Rat (85%), Pig (86%), Bovine (91%).

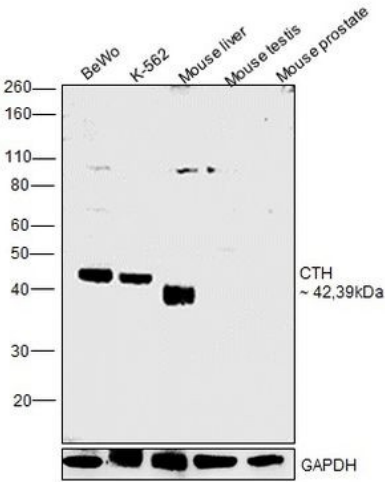
Store product as a concentrated solution. Centrifuge briefly prior to opening the vial.

Product Images For CTH Polyclonal Antibody



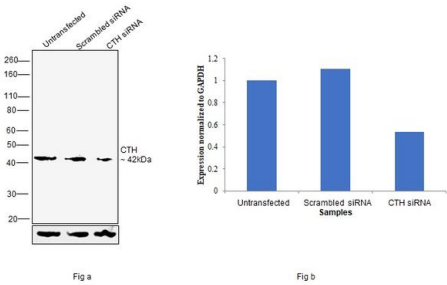
CTH Antibody (PA5-29725) in WB

Western blot was performed using CTH Polyclonal Antibody (Product # PA5-29725) and a 42 kDa, 39 kDa band corresponding to CTH was observed in tested cell lines and tissue positive (liver) for CTH respectively. Whole cell extracts (30 µg lysate) of BeWo (Lane 1), K 562 (Lane 2), tissue extracts (30 µg lysate) of Mouse liver (Lane 3), Mouse testis (Lane 4) and Mouse prostate (Lane 5) were electrophoresed using NuPAGE® 4-12 % Bis-Tris gel (Product # NP0322BOX). Resolved proteins were then transferred onto a nitrocellulose membrane (Product # IB23001) by iBlot® 2 Dry Blotting System (Product # IB21001). The blot was probed with the primary antibody (1:1000 dilution) and detected by chemiluminescence with Goat anti-Rabbit IgG (Heavy Chain), Superclonal™ Recombinant Secondary Antibody, HRP (Product # A27036, 1: 4000 dilution) using the iBright FL 1000 (Product # A32752). Chemiluminescent detection was performed using Novex® ECL Chemiluminescent Substrate Reagent Kit (Product # WP20005).



CTH Antibody (PA5-29725)

Antibody specificity was demonstrated by detection of differential basal expression of the target across tissue tested owing to their inherent genetic constitution. Relative expression of CTH was observed in Mouse liver in comparison to Mouse testis and Mouse prostate using CTH polyclonal antibody (Product # PA5-29725) in Western Blot. {RE}



CTH Antibody (PA5-29725) in WB

Knockdown of CTH was achieved by transfecting BeWo with CTH specific (Silencer® select Product # s3710, s3711). Western blot analysis (Fig. a) was performed using Modified whole cell extracts from the untransfected cells (Lane 1), non-specific scrambled siRNA transfected cells (Lane 2) and CTH knockdown cells (Lane 3). The blot was probed with CTH Polyclonal Antibody (Product # PA5-29725, 1:1000 dilution) and Goat anti-Rabbit IgG (Heavy Chain) Superclonal™ Recombinant Secondary Antibody, HRP (Product # A27036, 1: 4000 dilution). Densitometric analysis of this western blot is shown i histogram (Fig. b). Loss of signal upon siRNA mediated knock down confirms that antibody is specific to CTH.

View more figures on thermofisher.com

Western Blot (2)

<p>FASEB journal : official publication of the Federation of American Societies for Experimental Biology</p> <p>Hydrogen sulfide, oxygen, and calcium regulation in developing human airway smooth muscle.</p> <p>"PA5-29725 was used in Western Blotting to provide novel information regarding the potential for H2 S to act as a bronchodilator in developing airways in the context of oxygen exposure."</p> <p>Authors: Bartman CM,Schiliro M,Helan M,Prakash YS,Linden D,Pabelick C</p>	<p>Year 2020</p> <p>Species Human</p>
<p>Toxicology and applied pharmacology</p> <p>Cystathionine metabolic enzymes play a role in the inflammation resolution of human keratinocytes in response to sub-cytotoxic formaldehyde exposure.</p> <p>"PA529725 was used in western blot to assess the effects of sub-cytotoxic exposure to formaldehyde on skin cells"</p> <p>Authors: Lee E,Kim HJ,Lee M,Jin SH,Hong SH,Ahn S,Kim SO,Shin DW,Lee ST,Noh M</p>	<p>Year 2016</p> <p>Species Human</p>

For Research Use Only. Not for use in diagnostic procedures. Not for resale without express authorization. Products are warranted to operate or perform substantially in conformance with published Product specifications in effect at the time of sale, as set forth in the Production documentation, specifications and/or accompanying package inserts ("Documentation"). No claim of suitability for use in applications regulated by FDA is made. The warranty provided herein is valid only when used by properly trained individuals. Unless otherwise stated in the Documentation, this warranty is limited to one year from date of shipment when the Product is subjected to normal, proper and intended usage. This warranty does not extend to anyone other than the Buyer. Any model or sample furnished to Buyer is merely illustrative of the general type and quality of goods and does not represent that any Product will conform to such model or sample. NO OTHER WARRANTIES, EXPRESS OR IMPLIED, ARE GRANTED INCLUDING WITHOUT LIMITATION, IMPLIED WARRANTIES OF MERCHANTABILITY, FITNESS FOR ANY PARTICULAR PURPOSE, OR NON INFRINGEMENT. BUYER'S EXCLUSIVE REMEDY FOR NON-CONFORMING PRODUCTS DURING THE WARRANTY PERIOD IS LIMITED TO REPAIR, REPLACEMENT OF OR REFUND FOR THE NON-CONFORMING PRODUCT(S) AT SELLER'S SOLE OPTION. THERE IS NO OBLIGATION TO REPAIR, REPLACE OR REFUND FOR PRODUCTS AS THE RESULT OF (i) ACCIDENT, DISASTER OR EVENT OF FORCE MAJEURE, (ii) MISUSE, FAULT OR NEGLIGENCE OF OR BY BUYER, (iii) USE OF THE PRODUCTS IN A MANNER FOR WHICH THEY WERE NOT DESIGNED, OR (iv) IMPROPER STORAGE AND HANDLING OF THE PRODUCTS. Unless otherwise expressly stated on the Product or in the documentation accompanying the Product, the Product is intended for research only and is not to be used for any other purpose, including without limitation, unauthorized commercial uses, in vitro diagnostic uses, ex vivo or in vivo therapeutic uses, or any type of consumption by or application to human or animals.