

# KIF4A Polyclonal Antibody

Product Details	
Size	100 µL
Species Reactivity	Human
Host/Isotype	Rabbit / IgG
Class	Polyclonal
Type	Antibody
Conjugate	Unconjugated
Immunogen	Recombinant fragment corresponding to a region within amino acids 50 and 305 of Human KIF4A
Form	Liquid
Concentration	1 mg/mL
Purification	Antigen affinity chromatography
Storage buffer	0.1M tris glycine, pH 7, with 20% glycerol
Contains	0.01% thimerosal
Storage conditions	Store at 4°C short term. For long term storage, store at -20°C, avoiding freeze/thaw cycles.
RRID	AB_2547966

Applications	Tested Dilution	Publications
Western Blot (WB)	1:500-1:3,000	1 Publication
Immunohistochemistry (Paraffin) (IHC (P))	1:100-1:1,000	-
Immunocytochemistry (ICC/IF)	1:100-1:1,000	-

## Product Specific Information

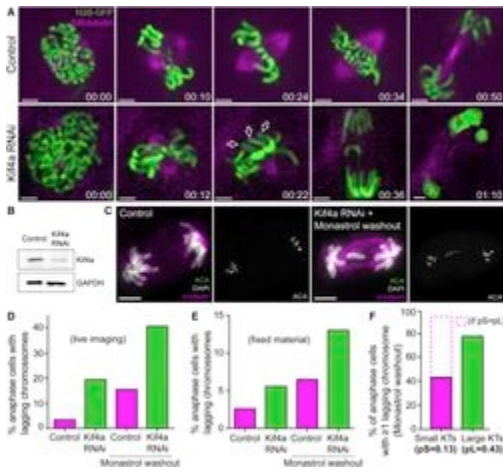
Recommended positive controls: HeLa, HepG2, HCT116, 293T, A431.

Predicted reactivity: *Xenopus laevis* (80%), Chicken (81%), Bovine (96%).

Store product as a concentrated solution. Centrifuge briefly prior to opening the vial.

**KIF4A Antibody (PA5-30492)**

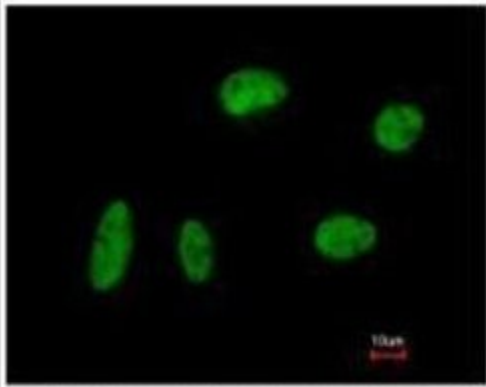
Polar Ejection Forces on Chromosome Arms Ensure Mitotic Fidelity but Are Not Implicated in the Observed Missegregation Bias for Chromosomes with Large Kinetochores (A) Live-cell imaging of Indian muntjac fibroblasts stably expressing H2B-GFP to visualize the chromosomes (green) in control (top) and Kif4a RNAi (bottom) cells treated with 50 nM SiR-tubulin to label spindle microtubules (magenta). Scale bar, 5  $\mu$ m. Time, hr:min. White arrows point to the chromosome arms facing the spindle poles. (B) Western blot to monitor Kif4a levels after RNAi. GAPDH was used as loading control. (C) Chromosome missegregation after Kif4a RNAi (fixed cells). Kinetochores (anti-ACA), -tubulin, and DNA (DAPI) are indicated. Scale bars, 5  $\mu$ m. (D and E) Comparison of the frequency of anaphase cells with lagging chromosomes in live (D) and fixed (E) material after Kif4a depletion and/or monastrol washout. (F) Frequency of anaphase cells with at least 1 lagging chromosome with small or large kinetochores after monastrol washout in Kif4a-depleted fibroblasts. Dashed bar represents theoretical values for frequencies of lagging chromosomes with small kinetochores if the probability to lag was equal for chromosomes with small or large kinetochores. Knockdown validation info.



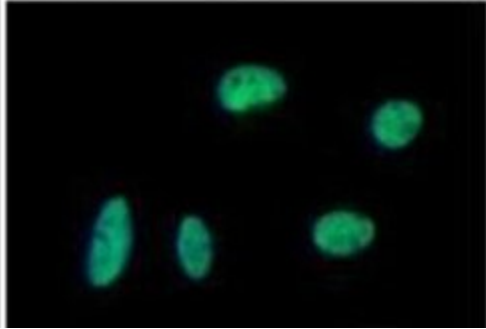
## Product Images For KIF4A Polyclonal Antibody

### KIF4A Antibody (PA5-30492) in ICC/IF

Immunofluorescent analysis of KIF4A in paraformaldehyde-fixed HeLa cells using a KIF4A polyclonal antibody (Product # PA5-30492) at a 1:200 dilution.

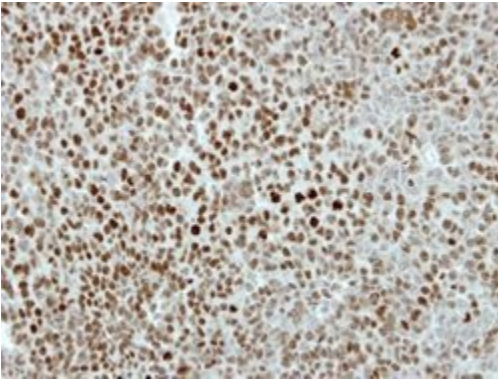


Costained with Hoechst 33342



### KIF4A Antibody (PA5-30492) in IHC (P)

Immunohistochemical analysis of KIF4A in paraffin-embedded TOV-112D xenograft using a KIF4A polyclonal antibody (Product # PA5-30492) at a dilution of 1:500.



[View more figures on thermofisher.com](https://www.thermofisher.com)

## Western Blot (1)

Current biology : CB

### Chromosome Segregation Is Biased by Kinetochores Size.

"Published figure using KIF4A polyclonal antibody (Product # PA5-30492) in Western Blot"

Authors: Drpic D, Almeida AC, Aguiar P, Renda F, Damas J, Lewin HA, Larkin DM, Khodjakov A, Maiato H

**Species**  
Not Applicable

**Dilution**  
Not Cited

**Year**  
2018

For Research Use Only. Not for use in diagnostic procedures. Not for resale without express authorization. Products are warranted to operate or perform substantially in conformance with published Product specifications in effect at the time of sale, as set forth in the Production documentation, specifications and/or accompanying package inserts ("Documentation"). No claim of suitability for use in applications regulated by FDA is made. The warranty provided herein is valid only when used by properly trained individuals. Unless otherwise stated in the Documentation, this warranty is limited to one year from date of shipment when the Product is subjected to normal, proper and intended usage. This warranty does not extend to anyone other than the Buyer. Any model or sample furnished to Buyer is merely illustrative of the general type and quality of goods and does not represent that any Product will conform to such model or sample. NO OTHER WARRANTIES, EXPRESS OR IMPLIED, ARE GRANTED INCLUDING WITHOUT LIMITATION, IMPLIED WARRANTIES OF MERCHANTABILITY, FITNESS FOR ANY PARTICULAR PURPOSE, OR NON INFRINGEMENT. BUYER'S EXCLUSIVE REMEDY FOR NON-CONFORMING PRODUCTS DURING THE WARRANTY PERIOD IS LIMITED TO REPAIR, REPLACEMENT OF OR REFUND FOR THE NON-CONFORMING PRODUCT(S) AT SELLER'S SOLE OPTION. THERE IS NO OBLIGATION TO REPAIR, REPLACE OR REFUND FOR PRODUCTS AS THE RESULT OF (I) ACCIDENT, DISASTER OR EVENT OF FORCE MAJEURE, (II) MISUSE, FAULT OR NEGLIGENCE OF OR BY BUYER, (III) USE OF THE PRODUCTS IN A MANNER FOR WHICH THEY WERE NOT DESIGNED, OR (IV) IMPROPER STORAGE AND HANDLING OF THE PRODUCTS. Unless otherwise expressly stated on the Product or in the documentation accompanying the Product, the Product is intended for research only and is not to be used for any other purpose, including without limitation, unauthorized commercial uses, in vitro diagnostic uses, ex vivo or in vivo therapeutic uses, or any type of consumption by or application to human or animals.