

GOLPH2 Polyclonal Antibody

Product Details	
Size	100 µL
Species Reactivity	Human
Published Species	Human
Host/Isotype	Rabbit / IgG
Class	Polyclonal
Type	Antibody
Conjugate	Unconjugated
Immunogen	Recombinant fragment corresponding to a region within amino acids 59 and 396 of Human GOLPH2
Form	Liquid
Concentration	0.16 mg/mL
Purification	Antigen affinity chromatography
Storage buffer	PBS, pH 7, with 1% BSA, 20% glycerol
Contains	0.025% ProClin 300
Storage conditions	Store at 4°C short term. For long term storage, store at -20°C, avoiding freeze/thaw cycles.
RRID	AB_2548096

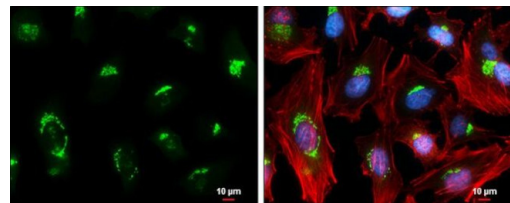
Applications	Tested Dilution	Publications
Western Blot (WB)	1:500-1:3,000	2 Publications
Immunohistochemistry (IHC)	-	1 Publication
Immunohistochemistry (Paraffin) (IHC (P))	1:100-1:1,000	-
Immunocytochemistry (ICC/IF)	1:100-1:1,000	-

Product Specific Information

Recommended positive controls: HeLa, HeLa membrane extract, DU145.

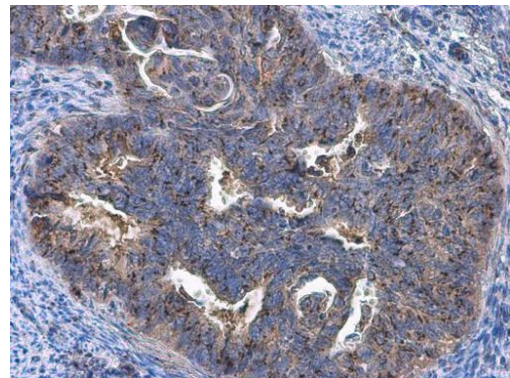
Store product as a concentrated solution. Centrifuge briefly prior to opening the vial.

Product Images For GOLPH2 Polyclonal Antibody



GOLPH2 Antibody (PA5-30622) in ICC/IF

Immunocytochemistry-Immunofluorescence analysis of GOLPH2 was performed in HeLa cells fixed in 4% paraformaldehyde at RT for 15 min. Green: GOLPH2 Polyclonal Antibody (Product # PA5-30622) diluted at 1:500. Red: phalloidin, a cytoskeleton marker. Blue: Hoechst 33342 staining. Scale bar = 10 μm.

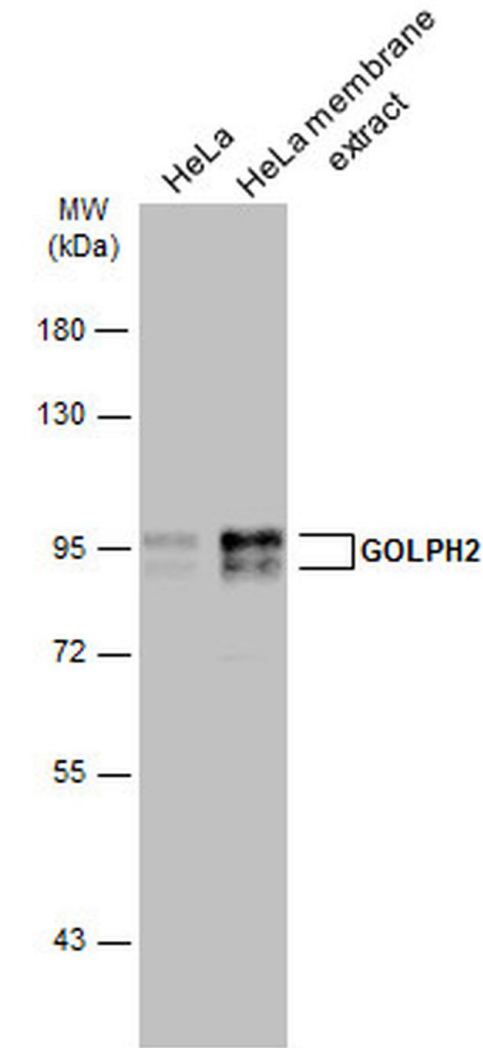


GOLPH2 Antibody (PA5-30622) in IHC (P)

Immunohistochemistry (Paraffin) analysis of GOLPH2 was performed in paraffin-embedded human endometrial carcinoma tissue using GOLPH2 Polyclonal Antibody (Product # PA5-30622) at a dilution of 1:10000. Antigen Retrieval: Citrate buffer, pH 6.0, 15 min.

GOLPH2 Antibody (PA5-30622) in WB

Western Blot analysis of GOLPH2 was performed by separating 30 μg of HeLa whole cell and membrane extracts by 7.5% SDS-PAGE. Proteins were transferred to a membrane and probed with a GOLPH2 Polyclonal Antibody (Product # PA5-30622) at a dilution of 1:1000 and a HRP-conjugated anti-rabbit IgG secondary antibody.



View more figures on thermofisher.com

Western Blot (2)

<p>Cell death & disease</p> <p>Argonaute 2 drives miR-145-5p-dependent gene expression program in breast cancer cells.</p> <p>"PA5-30622 was used in Western Blotting to study the contribution of Ago2 to the function of tumour-suppressor miR-145-5p in breast cancer."</p> <p>Authors: Bellissimo T,Tito C,Ganci F,Sacconi A,Masciarelli S,Di Martino G,Porta N,Cirenza M,Sorci M,De Angelis L,Rosa P,Calogero A,Fatica A,Petrozza V,Fontemaggi G,Blandino G,Fazi F</p>	<p>Year 2019</p> <p>Species Human</p>
<p>Molecular cancer</p> <p>Thymic Epithelial Tumors phenotype relies on miR-145-5p epigenetic regulation.</p> <p>"Published figure using GOLPH2 polyclonal antibody (Product # PA5-30622) in Immunohistochemistry"</p> <p>Authors: Bellissimo T,Ganci F,Gallo E,Sacconi A,Tito C,De Angelis L,Pulito C,Masciarelli S,Diso D,Anile M,Petrozza V,Giangaspero F,Pescarmona E,Facciolo F,Venuta F,Marino M,Blandino G,Fazi F</p>	<p>Year 2017</p>

Immunohistochemistry (1)

<p>Molecular cancer</p> <p>Thymic Epithelial Tumors phenotype relies on miR-145-5p epigenetic regulation.</p> <p>"Published figure using GOLPH2 polyclonal antibody (Product # PA5-30622) in Immunohistochemistry"</p> <p>Authors: Bellissimo T,Ganci F,Gallo E,Sacconi A,Tito C,De Angelis L,Pulito C,Masciarelli S,Diso D,Anile M,Petrozza V,Giangaspero F,Pescarmona E,Facciolo F,Venuta F,Marino M,Blandino G,Fazi F</p>	<p>Year 2017</p>
--	-----------------------------

For Research Use Only. Not for use in diagnostic procedures. Not for resale without express authorization. Products are warranted to operate or perform substantially in conformance with published Product specifications in effect at the time of sale, as set forth in the Production documentation, specifications and/or accompanying package inserts ("Documentation"). No claim of suitability for use in applications regulated by FDA is made. The warranty provided herein is valid only when used by properly trained individuals. Unless otherwise stated in the Documentation, this warranty is limited to one year from date of shipment when the Product is subjected to normal, proper and intended usage. This warranty does not extend to anyone other than the Buyer. Any model or sample furnished to Buyer is merely illustrative of the general type and quality of goods and does not represent that any Product will conform to such model or sample. NO OTHER WARRANTIES, EXPRESS OR IMPLIED, ARE GRANTED INCLUDING WITHOUT LIMITATION, IMPLIED WARRANTIES OF MERCHANTABILITY, FITNESS FOR ANY PARTICULAR PURPOSE, OR NON INFRINGEMENT. BUYER'S EXCLUSIVE REMEDY FOR NON-CONFORMING PRODUCTS DURING THE WARRANTY PERIOD IS LIMITED TO REPAIR, REPLACEMENT OF OR REFUND FOR THE NON-CONFORMING PRODUCT(S) AT SELLER'S SOLE OPTION. THERE IS NO OBLIGATION TO REPAIR, REPLACE OR REFUND FOR PRODUCTS AS THE RESULT OF (I) ACCIDENT, DISASTER OR EVENT OF FORCE MAJEURE, (II) MISUSE, FAULT OR NEGLIGENCE OF OR BY BUYER, (III) USE OF THE PRODUCTS IN A MANNER FOR WHICH THEY WERE NOT DESIGNED, OR (IV) IMPROPER STORAGE AND HANDLING OF THE PRODUCTS. Unless otherwise expressly stated on the Product or in the documentation accompanying the Product, the Product is intended for research only and is not to be used for any other purpose, including without limitation, unauthorized commercial uses, in vitro diagnostic uses, ex vivo or in vivo therapeutic uses, or any type of consumption by or application to human or animals.