

RAB11B Polyclonal Antibody

| Product Details | |
|--------------------|--|
| Size | 100 µL |
| Species | Human, Mouse, Rat |
| Expression System | Rabbit / IgG |
| Class | Polyclonal |
| Type | Antibody |
| Conjugate | Unconjugated |
| Immunogen | Recombinant fragment corresponding to a region within amino acids 1 and 213 of Human RAB11B |
| Form | Liquid |
| Concentration | 0.86 mg/mL |
| Purification | Antigen affinity chromatography |
| Storage buffer | PBS, pH 7, with 20% glycerol |
| Contains | 0.025% Proclin 300 |
| Storage Conditions | Store at 4°C short term. For long term storage, store at -20°C, avoiding freeze/thaw cycles. |
| RRID | AB_2548822 |

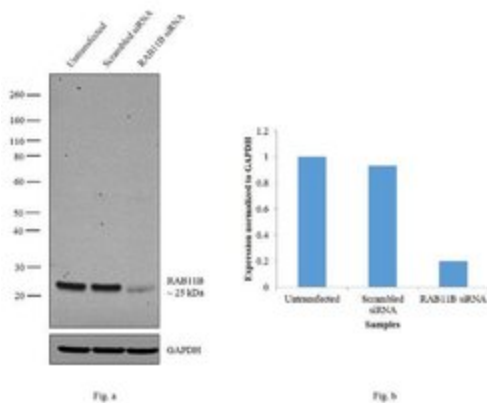
| Applications | Tested Dilution | Publications |
|---|-----------------|---------------|
| Immunocytochemistry (ICC) | 1:100-1:1000 | - |
| Immunofluorescence (IF) | 1:100-1:1000 | - |
| Immunohistochemistry (Frozen) (IHC (F)) | 1:100-1:1000 | - |
| Immunohistochemistry (Paraffin) (IHC (P)) | 1:100-1:1000 | - |
| Western Blot (WB) | 1:500-1:3000 | - |
| Immunohistochemistry (IHC) | - | 1 Publication |

Product Specific Information

Recommended positive controls: U87-MG, SK-N-SH, IMR32, SK-N-AS, Mouse brain, PC-12, Rat2.

Predicted reactivity: Mouse (100%), Rat (100%), Pig (100%), Chicken (99%), Rhesus Monkey (100%), Bovine (100%).

Store product as a concentrated solution. Centrifuge briefly prior to opening the vial.



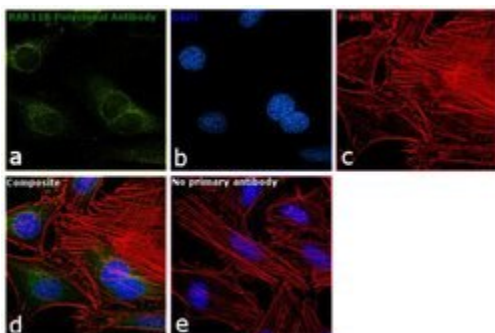
RAB11B Antibody (PA5-31348)

Antibody specificity was demonstrated by siRNA mediated knockdown of target protein. HeLa cells were transfected with RAB11B siRNA and reduction of signal was observed in Western Blot using RAB11B Polyclonal Antibody (Product # PA5-31348). Knockdown validation info.

Product Images For RAB11B Polyclonal Antibody

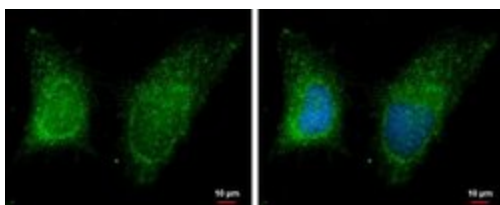
RAB11B Antibody (PA5-31348) in IF

Immunofluorescence analysis of RAB11B was performed using 70% confluent log phase HeLa cells. The cells were fixed with 4% paraformaldehyde for 10 minutes, permeabilized with 0.1% Triton™ X-100 for 15 minutes, and blocked with 1% BSA for 1 hour at room temperature. The cells were labeled with RAB11B Polyclonal Antibody (Product # PA5-31348) at 1:500 dilution in 0.1% BSA, incubated at 4 degree Celsius overnight and then labeled with Goat anti-Rabbit IgG (H+L) Superclonal™ Secondary Antibody, Alexa Fluor® 488 conjugate (Product # A27034) at a dilution of 1:2000 for 45 minutes at room temperature (Panel a: green). Nuclei (Panel b: blue) were stained with SlowFade® Gold Antifade Mountant with DAPI (Product # S36938). F-actin (Panel c: red) was stained with Rhodamine Phalloidin (Product # R415, 1:300). Panel d represents the merged image showing cytoplasmic localization. Panel e represents control cells with no primary antibody to assess background. The images were captured at 60X magnification.



RAB11B Antibody (PA5-31348) in IF

Immunofluorescent analysis of RAB11B showing staining in the cytoplasm of HeLa cells. HeLa cells were fixed in 2% paraformaldehyde at RT for 15 min and stained using a RAB11B polyclonal antibody (Product # PA5-31348) diluted at 1:500. Blue: Hoechst 33342 staining.



View more figures on thermofisher.com

Immunohistochemistry (1)

Oncotarget

A novel liver metastasis-correlated protein of pancreatic neuroendocrine neoplasm (PanNEN) discovered by proteomic analysis.

"Published figure using RAB11B polyclonal antibody (Product # PA5-31348) in Immunohistochemistry"

Authors: Shimura M, Mizuma M, Takadate T, Katoh Y, Suzuki T, Iseki M, Hata T, Aoki S, Suzuki Y, Sakata N, Ohtsuka H, Hayashi H, Morikawa T, Nakagawa K, Motoi F, Naitoh T, Igarashi K, Sasano H, Unno M

Species
Not Applicable

Dilution
Not Cited

Year
2018

For Research Use Only. Not for use in diagnostic procedures. Not for resale without express authorization. Products are warranted to operate or perform substantially in conformance with published Product specifications in effect at the time of sale, as set forth in the Production documentation, specifications and/or accompanying package inserts ("Documentation"). No claim of suitability for use in applications regulated by FDA is made. The warranty provided herein is valid only when used by properly trained individuals. Unless otherwise stated in the Documentation, this warranty is limited to one year from date of shipment when the Product is subjected to normal, proper and intended usage. This warranty does not extend to anyone other than the Buyer. Any model or sample furnished to Buyer is merely illustrative of the general type and quality of goods and does not represent that any Product will conform to such model or sample. NO OTHER WARRANTIES, EXPRESS OR IMPLIED, ARE GRANTED INCLUDING WITHOUT LIMITATION, IMPLIED WARRANTIES OF MERCHANTABILITY, FITNESS FOR ANY PARTICULAR PURPOSE, OR NON INFRINGEMENT. BUYER'S EXCLUSIVE REMEDY FOR NON-CONFORMING PRODUCTS DURING THE WARRANTY PERIOD IS LIMITED TO REPAIR, REPLACEMENT OF OR REFUND FOR THE NON-CONFORMING PRODUCT(S) AT SELLER'S SOLE OPTION. THERE IS NO OBLIGATION TO REPAIR, REPLACE OR REFUND FOR PRODUCTS AS THE RESULT OF (I) ACCIDENT, DISASTER OR EVENT OF FORCE MAJEURE, (II) MISUSE, FAULT OR NEGLIGENCE OF OR BY BUYER, (III) USE OF THE PRODUCTS IN A MANNER FOR WHICH THEY WERE NOT DESIGNED, OR (IV) IMPROPER STORAGE AND HANDLING OF THE PRODUCTS. Unless otherwise expressly stated on the Product or in the documentation accompanying the Product, the Product is intended for research only and is not to be used for any other purpose, including without limitation, unauthorized commercial uses, in vitro diagnostic uses, ex vivo or in vivo therapeutic uses, or any type of consumption by or application to human or animals.