

# KDM6A Polyclonal Antibody

Product Details	
Size	100 µL
Species Reactivity	Human, Mouse
Host/Isotype	Rabbit / IgG
Class	Polyclonal
Type	Antibody
Conjugate	Unconjugated
Immunogen	Recombinant fragment corresponding to a region within amino acids 409 and 750 of Human KDM6A
Form	Liquid
Concentration	0.68 mg/mL
Purification	Antigen affinity chromatography
Storage buffer	PBS, pH 7, with 20% glycerol
Contains	0.025% ProClin 300
Storage conditions	Store at 4°C short term. For long term storage, store at -20°C, avoiding freeze/thaw cycles.
RRID	AB_2549301

Applications	Tested Dilution	Publications
Western Blot (WB)	1:500-1:3,000	-
Immunohistochemistry (Paraffin) (IHC (P))	1:100-1:1,000	-
Immunocytochemistry (ICC/IF)	1:100-1:1,000	-
Immunoprecipitation (IP)	1:100-1:500	-
ChIP assay (ChIP)	Assay-Dependent	-

## Product Specific Information

Recommended positive controls: SK-N-SH, IMR32, SK-N-AS.

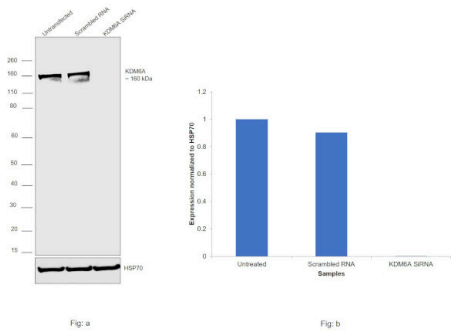
Predicted reactivity: Mouse (93%), Xenopus laevis (82%), Dog (86%), Bovine (98%).

Store product as a concentrated solution. Centrifuge briefly prior to opening the vial.

Product Images For KDM6A Polyclonal Antibody

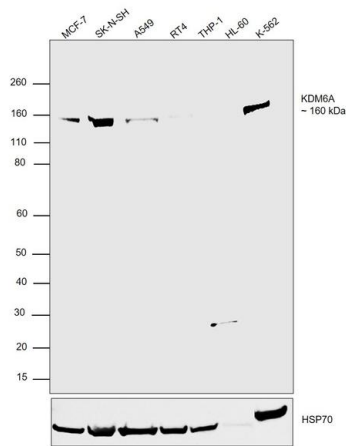
KDM6A Antibody (PA5-31828)

Antibody specificity was demonstrated by siRNA mediated knockdown of target protein. K-562 cells were transfected with KDM6A siRNA and decrease in signal intensity was observed in Western Blot application using Anti-KDM6A Polyclonal Antibody (Product # PA5-31828). {KD}



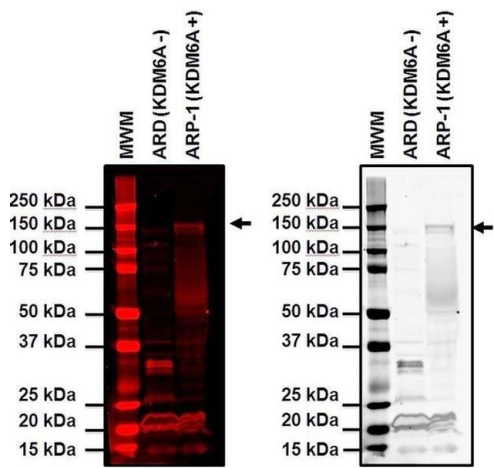
KDM6A Antibody (PA5-31828) in WB

Western blot was performed using Anti-KDM6A Polyclonal Antibody (Product # PA5-31828) and a 160 kDa band corresponding to KDM6A was observed across cell lines. Whole cell extracts (40 µg lysate) of MCF7 (Lane 1), SK-N-SH (Lane 2), A549 (Lane 3), RT-4 (Lane 4), THP-1 (Lane 5), HL-60 (Lane 6) and K-562 (Lane 7) were electrophoresed using NuPAGE™ 4-12% Bis-Tris Protein Gel (Product # NP0321BOX). Resolved proteins were then transferred onto a nitrocellulose membrane (Product # IB23001) by iBlot® 2 Dry Blotting System (Product # IB21001). The blot was probed with the primary antibody at a 0.63 µg/mL and detected by chemiluminescence with Goat anti-Rabbit IgG (Heavy Chain) Superclonal™ Recombinant Secondary Antibody, HRP (Product # A27036, 1:20000) using the iBright™ FL1500 Imaging System (Product # A44115). Chemiluminescent detection was performed using SuperSignal™ West Atto Ultimate Sensitivity Substrate (Product # A38556).



KDM6A Antibody (PA5-31828) in WB

Western blot analysis of UTX/KDM6A was performed by loading 2 µg of molecular weight marker (MWM), 40 µg of ARD (a KDM6A negative cell line) or 40 µg of ARP-1 (a matched KDM6A positive cell line) cell lysate onto a NuPAGE 4-12% Bis-Tris Gel (Product # NP0321BOX) and running with Novex NuPAGE MES SDS Running buffer (Product # NP0002). Proteins were transferred to Immobulon-FL PVDF membrane and blocked for 1 hour in LI-COR blocking buffer. Membrane was incubated overnight at 4°C in LI-COR blocking buffer containing a 1:1000 dilution of KDM6A polyclonal antibody (Product # PA5-31828), followed by a 1 hour room temperature incubation in TBST containing a 1:10000 dilution of 680 Goat anti-Rabbit IgG (H+L) Highly Cross-Adsorbed Secondary Antibody, Alexa Fluor Plus 680 (Product # A32734). Detection of KDM6A at approximately 150 kDa (indicated by the arrow) was performed using a LI-COR Odyssey CLx using the 700nm channel. (left) red channel image (right) inverted grey scale image. Data courtesy of Dr. Jonathan D. Licht's laboratory.



View more figures on [thermofisher.com](https://thermofisher.com)

For Research Use Only. Not for use in diagnostic procedures. Not for resale without express authorization. Products are warranted to operate or perform substantially in conformance with published Product specifications in effect at the time of sale, as set forth in the Production documentation, specifications and/or accompanying package inserts ("Documentation"). No claim of suitability for use in applications regulated by FDA is made. The warranty provided herein is valid only when used by properly trained individuals. Unless otherwise stated in the Documentation, this warranty is limited to one year from date of shipment when the Product is subjected to normal, proper and intended usage. This warranty does not extend to anyone other than the Buyer. Any model or sample furnished to Buyer is merely illustrative of the general type and quality of goods and does not represent that any Product will conform to such model or sample. NO OTHER WARRANTIES, EXPRESS OR IMPLIED, ARE GRANTED INCLUDING WITHOUT LIMITATION, IMPLIED WARRANTIES OF MERCHANTABILITY, FITNESS FOR ANY PARTICULAR PURPOSE, OR NON-INFRINGEMENT. BUYER'S EXCLUSIVE REMEDY FOR NON-CONFORMING PRODUCTS DURING THE WARRANTY PERIOD IS LIMITED TO REPAIR, REPLACEMENT OF OR REFUND FOR THE NON-CONFORMING PRODUCT(S) AT SELLER'S SOLE OPTION. THERE IS NO OBLIGATION TO REPAIR, REPLACE OR REFUND FOR PRODUCTS AS THE RESULT OF (i) ACCIDENT, DISASTER OR EVENT OF FORCE MAJEURE, (ii) MISUSE, FAULT OR NEGLIGENCE OF OR BY BUYER, (iii) USE OF THE PRODUCTS IN A MANNER FOR WHICH THEY WERE NOT DESIGNED, OR (iv) IMPROPER STORAGE AND HANDLING OF THE PRODUCTS. Unless otherwise expressly stated on the Product or in the documentation accompanying the Product, the Product is intended for research only and is not to be used for any other purpose, including without limitation, unauthorized commercial uses, in vitro diagnostic uses, ex vivo or in vivo therapeutic uses, or any type of consumption by or application to human or animals.