

# ALDH1A1 Polyclonal Antibody

Product Details	
Size	100 µL
Species Reactivity	Human, Mouse, Rat
Published Species	Rat, Human
Host/Isotype	Rabbit / IgG
Class	Polyclonal
Type	Antibody
Conjugate	Unconjugated
Immunogen	Recombinant protein fragment corresponding to a region within amino acids 192 and 501 of Human ALDH1A1
Form	Liquid
Concentration	1 mg/mL
Purification	Antigen affinity chromatography
Storage buffer	PBS, pH 7, with 1% BSA, 20% glycerol
Contains	0.01% thimerosal
Storage conditions	Store at 4°C short term. For long term storage, store at -20°C, avoiding freeze/thaw cycles.
RRID	AB_2549600

Applications	Tested Dilution	Publications
Western Blot (WB)	1:1,000-1:10,000	1 Publication
Immunohistochemistry (IHC)	-	2 Publications
Immunohistochemistry (Paraffin) (IHC (P))	1:100-1:1,000	-
Immunocytochemistry (ICC/IF)	1:100-1:1,000	-

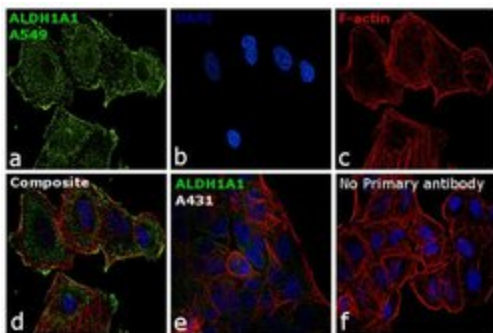
## Product Specific Information

Recommended positive controls: A549, mouse liver, rat liver.

Predicted reactivity: Mouse (90%), Rat (90%), Xenopus laevis (81%), Dog (90%), Rabbit (90%), Chicken (86%), Sheep (93%), Chimpanzee (100%), Bovine (93%).

Store product as a concentrated solution. Centrifuge briefly prior to opening the vial.

## Advanced Verification Data

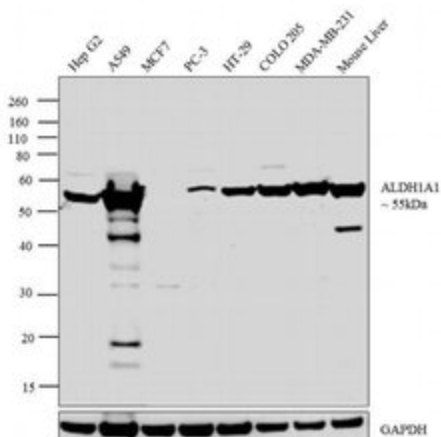


### ALDH1A1 Antibody (PA5-32127)

Antibody specificity was demonstrated by detection of differential basal expression of the target across cell models owing to their inherent genetic constitution. Immunofluorescence analysis using ALDH1A1 Polyclonal antibody (Product # PA5-32127) showed increased expression of ALDH1A1 in A-549 when compared to A-431. Relative expression validation info.

### ALDH1A1 Antibody (PA5-32127)

Antibody specificity was demonstrated by detection of differential basal expression of the target across cell models owing to their inherent genetic constitution. Expression of ALDH1A1 Polyclonal Antibody was not observed specifically in MCF7 using Anti-ALDH1A1 Polyclonal Antibody (Product # PA5-32127) in Western Blot. Relative expression validation info.



## Product Images For ALDH1A1 Polyclonal Antibody

### ALDH1A1 Antibody (PA5-32127) in ICC/IF

Immunofluorescence analysis of ALDH1A1 was performed using 70% confluent log phase A549 cells. The cells were fixed with 4% paraformaldehyde for 10 minutes, permeabilized with 0.1% Triton™ X-100 for 15 minutes, and blocked with 1% BSA for 1 hour at room temperature. The cells were labeled with ALDH1A1 Polyclonal Antibody (Product # PA5-32127) at 5 µg/mL in 0.1% BSA, incubated at 4 degree Celsius overnight and then labeled with Goat anti-Rabbit IgG (H+L) Superclonal™ Secondary Antibody, Alexa Fluor® 488 conjugate (Product # A27034) at a dilution of 1:2000 for 45 minutes at room temperature (Panel a: green). Nuclei (Panel b: blue) were stained with ProLong™ Diamond Antifade Mountant with DAPI (Product # P36962). F-actin (Panel c: red) was stained with Rhodamine Phalloidin (Product # R415). Panel d represents the merged image showing cytoplasmic localization. Panel e represents A-431 cells having lower expression of ALDH1A1. Panel f represents control cells with no primary antibody to assess background. The images were captured at 60X magnification.

View more figures on [thermofisher.com](https://thermofisher.com)

## Western Blot (1)

Cancer medicine

### Friend leukemia virus integration 1 is a predictor of poor prognosis of breast cancer and promotes metastasis and cancer stem cell properties of breast cancer cells.

"PA5-32127 was used in Immunohistochemistry to indicate that in patients with breast cancer FLI-1 can be used to predict a of poor prognosis. FLI-1 further has metastatic properties and this can provide a potential target to treat breast cancer in the near future."

Authors: Yan X, Yu Y, Li L, Chen N, Song W, He H, Dong J, Liu X, Cui J

**Species**  
Human

**Dilution**  
Not Cited

**Year**  
2018

## Immunohistochemistry (2)

International journal of molecular sciences

### *Rhus coriaria* L. (Sumac) Demonstrates Oncostatic Activity in the Therapeutic and Preventive Model of Breast Carcinoma.

"PA5-32127 was used in Immunohistochemistry to evaluate the oncostatic activities of *Rhus coriaria* L. (sumac) using animal models (rat and mouse), and cell lines of breast carcinoma."

Authors: Kubatka P, Kello M, Kajo K, Samec M, Liskova A, Jasek K, Koklesova L, Kuruc T, Adamkov M, Smejkal K, Svajdlenka E, Solar P, Pec M, Büsselberg D, Sadlonova V, Mojzis J

**Species**  
Rat

**Dilution**  
1:500

**Year**  
2020

Cancer medicine

### Friend leukemia virus integration 1 is a predictor of poor prognosis of breast cancer and promotes metastasis and cancer stem cell properties of breast cancer cells.

"PA5-32127 was used in Immunohistochemistry to indicate that in patients with breast cancer FLI-1 can be used to predict a of poor prognosis. FLI-1 further has metastatic properties and this can provide a potential target to treat breast cancer in the near future."

Authors: Yan X, Yu Y, Li L, Chen N, Song W, He H, Dong J, Liu X, Cui J

**Species**  
Human

**Dilution**  
Not Cited

**Year**  
2018

For Research Use Only. Not for use in diagnostic procedures. Not for resale without express authorization. Products are warranted to operate or perform substantially in conformance with published Product specifications in effect at the time of sale, as set forth in the Production documentation, specifications and/or accompanying package inserts ("Documentation"). No claim of suitability for use in applications regulated by FDA is made. The warranty provided herein is valid only when used by properly trained individuals. Unless otherwise stated in the Documentation, this warranty is limited to one year from date of shipment when the Product is subjected to normal, proper and intended usage. This warranty does not extend to anyone other than the Buyer. Any model or sample furnished to Buyer is merely illustrative of the general type and quality of goods and does not represent that any Product will conform to such model or sample. NO OTHER WARRANTIES, EXPRESS OR IMPLIED, ARE GRANTED INCLUDING WITHOUT LIMITATION, IMPLIED WARRANTIES OF MERCHANTABILITY, FITNESS FOR ANY PARTICULAR PURPOSE, OR NON INFRINGEMENT. BUYER'S EXCLUSIVE REMEDY FOR NON-CONFORMING PRODUCTS DURING THE WARRANTY PERIOD IS LIMITED TO REPAIR, REPLACEMENT OF OR REFUND FOR THE NON-CONFORMING PRODUCT(S) AT SELLER'S SOLE OPTION. THERE IS NO OBLIGATION TO REPAIR, REPLACE OR REFUND FOR PRODUCTS AS THE RESULT OF (I) ACCIDENT, DISASTER OR EVENT OF FORCE MAJEURE, (II) MISUSE, FAULT OR NEGLIGENCE OF OR BY BUYER, (III) USE OF THE PRODUCTS IN A MANNER FOR WHICH THEY WERE NOT DESIGNED, OR (IV) IMPROPER STORAGE AND HANDLING OF THE PRODUCTS. Unless otherwise expressly stated on the Product or in the documentation accompanying the Product, the Product is intended for research only and is not to be used for any other purpose, including without limitation, unauthorized commercial uses, in vitro diagnostic uses, ex vivo or in vivo therapeutic uses, or any type of consumption by or application to human or animals.