

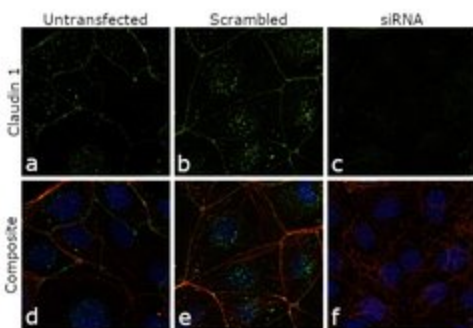
Claudin 1 Polyclonal Antibody

Product Details	
Size	500 µL
Species Reactivity	Human, Mouse, Rat
Host/Isotype	Rabbit / IgG
Class	Polyclonal
Type	Antibody
Conjugate	Unconjugated
Immunogen	Synthetic peptide derived from C-terminus of human claudin-1 peptide.
Form	Liquid
Purification	Antigen affinity chromatography
Storage buffer	PBS, pH 7.6, with 1% BSA
Contains	0.1% sodium azide
Storage Conditions	Store at 4°C short term. For long term storage, store at -20°C, avoiding freeze/thaw cycles.
RRID	AB_2549821

Applications	Tested Dilution	Publications
Western Blot (WB)	Assay Dependent	-
Immunohistochemistry (Paraffin) (IHC (P))	1:200	-
Immunohistochemistry (Frozen) (IHC (F))	1:200	-
Immunocytochemistry (ICC)	1:100	-
Immunofluorescence (IF)	1:100	-
Immunoprecipitation (IP)	1:2500	-

Product Specific Information

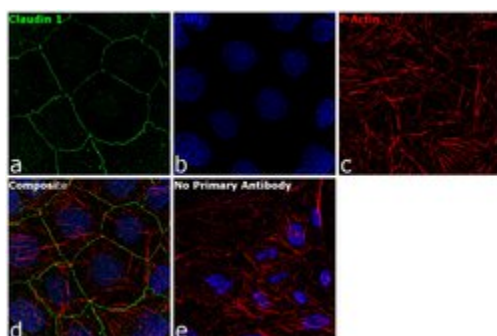
Heat-mediated antigen retrieval is recommended prior to staining, using a 10mM citrate buffer, pH 6.0, for 10 minutes followed by cooling at room temperature for 20 min. Following antigen retrieval, incubate samples with primary antibody for 10 min at room temperature. A suggested positive control is skin, breast carcinoma or ovarian carcinoma.



Claudin 1 Antibody (PA5-32350)

Antibody specificity was demonstrated by siRNA mediated knockdown of target protein. Caco-2 cells were transfected with Claudin 1 siRNA and reduction in signal was observed in Immunofluorescence using Claudin 1 Polyclonal Antibody (Product # PA5-32350). Knockdown validation info.

Product Images For Claudin 1 Polyclonal Antibody



Claudin 1 Antibody (PA5-32350) in IF

Immunofluorescence analysis of Claudin 1 was performed using 90% confluent log phase Caco-2 cells. The cells were fixed with 4% paraformaldehyde for 10 minutes, permeabilized with 0.1% Triton™ X-100 for 15 minutes, and blocked with 1% BSA for 1 hour at room temperature. The cells were labeled with Claudin 1 Rabbit Polyclonal Antibody (Product # PA5-32350) at 1:100 dilution in 0.1% BSA, incubated at 4 degree Celsius overnight and then labeled with Goat anti-Rabbit IgG (H+L) Superclonal™ Secondary Antibody, Alexa Fluor® 488 conjugate (Product # A27034) at a dilution of 1:2000 for 45 minutes at room temperature (Panel a: green). Nuclei (Panel b: blue) were stained with SlowFade® Gold Antifade Mountant with DAPI (Product # S36938). F-actin (Panel c: red) was stained with Rhodamine Phalloidin (Product # R415, 1:300). Panel d represents the merged image showing localization at the cell junction. Panel e represents control cells with no primary antibody to assess background. The images were captured at 60X magnification.

Claudin 1 Antibody (PA5-32350) in IF

Knockdown of Claudin 1 was achieved by transfecting Caco-2 cells with Claudin 1 specific siRNA (Silencer® select Product # s17315, s17316). Immunofluorescence analysis was performed using untransfected Caco-2 cells (panels a, d), transfected with non-specific scrambled siRNA (panels b, e) and transfected with Claudin 1 specific siRNAs (panel c, f). Cells were fixed, permeabilized, and probed with Claudin 1 Polyclonal Antibody (Product # PA5-32350, 1:250 dilution), followed by labelling with Goat anti-Mouse IgG (H+L) Superclonal™ Secondary Antibody, Alexa Fluor 488 (Product # A27034, 1:2000). Nuclei (blue) were stained using ProLong™ Diamond Antifade Mountant with DAPI (Product # P36962) and Rhodamine Phalloidin (Product # R415, 1:300) was used for cytoskeletal F-actin (red) staining. Reduction of specific junctional localization was observed upon siRNA mediated knockdown (panel c, f) confirming specificity of the antibody to Claudin 1. The images were captured at 60X magnification.

View more figures on thermofisher.com

For Research Use Only. Not for use in diagnostic procedures. Not for resale without express authorization. Products are warranted to operate or perform substantially in conformance with published Product specifications in effect at the time of sale, as set forth in the Production documentation, specifications and/or accompanying package inserts ("Documentation"). No claim of suitability for use in applications regulated by FDA is made. The warranty provided herein is valid only when used by properly trained individuals. Unless otherwise stated in the Documentation, this warranty is limited to one year from date of shipment when the Product is subjected to normal, proper and intended usage. This warranty does not extend to anyone other than the Buyer. Any model or sample furnished to Buyer is merely illustrative of the general type and quality of goods and does not represent that any Product will conform to such model or sample. NO OTHER WARRANTIES, EXPRESS OR IMPLIED, ARE GRANTED INCLUDING WITHOUT LIMITATION, IMPLIED WARRANTIES OF MERCHANTABILITY, FITNESS FOR ANY PARTICULAR PURPOSE, OR NON INFRINGEMENT. BUYER'S EXCLUSIVE REMEDY FOR NON-CONFORMING PRODUCTS DURING THE WARRANTY PERIOD IS LIMITED TO REPAIR, REPLACEMENT OF OR REFUND FOR THE NON-CONFORMING PRODUCT(S) AT SELLER'S SOLE OPTION. THERE IS NO OBLIGATION TO REPAIR, REPLACE OR REFUND FOR PRODUCTS AS THE RESULT OF (I) ACCIDENT, DISASTER OR EVENT OF FORCE MAJEURE, (II) MISUSE, FAULT OR NEGLIGENCE OF OR BY BUYER, (III) USE OF THE PRODUCTS IN A MANNER FOR WHICH THEY WERE NOT DESIGNED, OR (IV) IMPROPER STORAGE AND HANDLING OF THE PRODUCTS. Unless otherwise expressly stated on the Product or in the documentation accompanying the Product, the Product is intended for research only and is not to be used for any other purpose, including without limitation, unauthorized commercial uses, in vitro diagnostic uses, ex vivo or in vivo therapeutic uses, or any type of consumption by or application to human or animals.