

CRF Polyclonal Antibody

Product Details	
Size	500 µL
Species Reactivity	Human
Published Species	Mouse
Host/Isotype	Rabbit / IgG
Class	Polyclonal
Type	Antibody
Conjugate	Unconjugated
Immunogen	Synthetic peptide from C-terminus of human CRF protein.
Form	Liquid
Storage Conditions	Store at 4°C short term. For long term storage, store at -20°C, avoiding freeze/thaw cycles.
RRID	AB_2549834

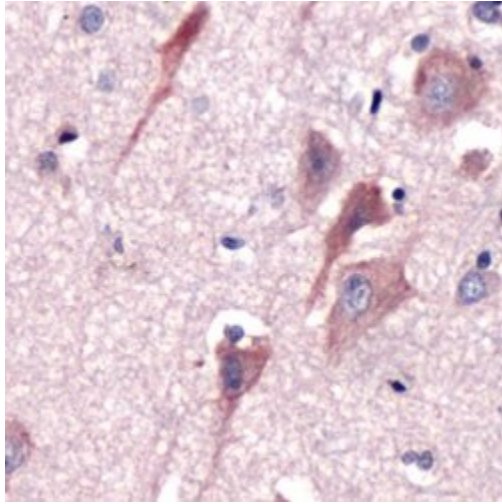
Applications	Tested Dilution	Publications
Immunohistochemistry (Paraffin) (IHC (P))	1:100	-
Miscellaneous PubMed (Misc)	-	1 Publication

Product Specific Information

This antibody is predicted to react with chicken, canine, amphibian, mouse, porcine and rat based on sequence homology.

Heat-mediated antigen retrieval is recommended prior to staining, using a 10mM citrate buffer, pH 6.0, for 10 minutes followed by cooling at room temperature for 20 min. Following antigen retrieval, incubate samples with primary antibody for 10 min at room temperature. A suggested positive control is brain or placenta tissue.

Product Images For CRF Polyclonal Antibody



CRF Antibody (PA5-32364) in IHC

Immunohistochemical analysis of Corticotropin Releasing Factor using anti-Corticotropin Releasing Factor Polyclonal Antibody (Product # PA5-32364) in Brain Tissue. The recommended dilution for this antibody in immunohistochemistry applications is 1:100.



CRF Antibody (PA5-32364) in IHC

Immunohistochemical analysis of CRF using a polyclonal antibody (Product # PA1-37499).

1 Reference

Miscellaneous PubMed (1)

Behavioral and brain functions : BBF

Fibroblast growth factor 8 regulates postnatal development of paraventricular nucleus neuroendocrine cells.

"PA1-37499 was used in immunohistochemistry to study the effects of Fgf8 hypomorph on the brain"

Authors: Rodriguez KM,Stevenson EL,Stewart CE,Linscott ML,Chung WC

Species
Mouse

Dilution
1:15,000

Year
2015

For Research Use Only. Not for use in diagnostic procedures. Not for resale without express authorization. Products are warranted to operate or perform substantially in conformance with published Product specifications in effect at the time of sale, as set forth in the Production documentation, specifications and/or accompanying package inserts ("Documentation"). No claim of suitability for use in applications regulated by FDA is made. The warranty provided herein is valid only when used by properly trained individuals. Unless otherwise stated in the Documentation, this warranty is limited to one year from date of shipment when the Product is subjected to normal, proper and intended usage. This warranty does not extend to anyone other than the Buyer. Any model or sample furnished to Buyer is merely illustrative of the general type and quality of goods and does not represent that any Product will conform to such model or sample. NO OTHER WARRANTIES, EXPRESS OR IMPLIED, ARE GRANTED INCLUDING WITHOUT LIMITATION, IMPLIED WARRANTIES OF MERCHANTABILITY, FITNESS FOR ANY PARTICULAR PURPOSE, OR NON-INFRINGEMENT. BUYER'S EXCLUSIVE REMEDY FOR NON-CONFORMING PRODUCTS DURING THE WARRANTY PERIOD IS LIMITED TO REPAIR, REPLACEMENT OF OR REFUND FOR THE NON-CONFORMING PRODUCT(S) AT SELLER'S SOLE OPTION. THERE IS NO OBLIGATION TO REPAIR, REPLACE OR REFUND FOR PRODUCTS AS THE RESULT OF (I) ACCIDENT, DISASTER OR EVENT OF FORCE MAJEURE, (II) MISUSE, FAULT OR NEGLIGENCE OF OR BY BUYER, (III) USE OF THE PRODUCTS IN A MANNER FOR WHICH THEY WERE NOT DESIGNED, OR (IV) IMPROPER STORAGE AND HANDLING OF THE PRODUCTS. Unless otherwise expressly stated on the Product or in the documentation accompanying the Product, the Product is intended for research only and is not to be used for any other purpose, including without limitation, unauthorized commercial uses, in vitro diagnostic uses, ex vivo or in vivo therapeutic uses, or any type of consumption by or application to human or animals.