

PMEL Polyclonal Antibody

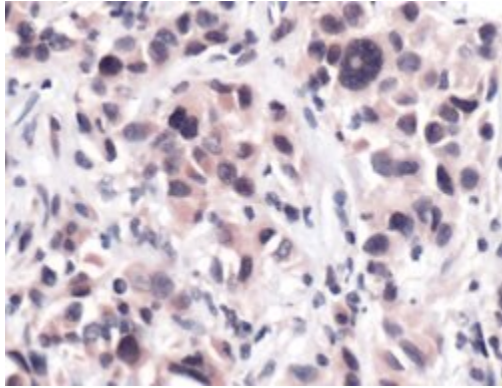
Product Details	
Size	500 µL
Species Reactivity	Human
Host/Isotype	Rabbit / IgG
Class	Polyclonal
Type	Antibody
Conjugate	Unconjugated
Immunogen	Recombinant protein encoding aa 1-150 human gp100.
Form	Liquid
Concentration	0.2 mg/mL
Purification	Antigen affinity chromatography
Storage buffer	PBS, pH 7.6, with 1% BSA
Contains	0.1% sodium azide
Storage Conditions	Store at 4°C short term. For long term storage, store at -20°C, avoiding freeze/thaw cycles.
RRID	AB_2549958

Applications	Tested Dilution	Publications
Immunohistochemistry (Paraffin) (IHC (P))	1:50	-
Immunofluorescence (IF)	-	1 Publication

Product Specific Information

Heat-mediated antigen retrieval is recommended prior to staining, using a 10mM citrate buffer, pH 6.0, for 10 minutes followed by cooling at room temperature for 20 min. Following antigen retrieval, incubate samples with primary antibody for 10 min at room temperature. A suggested positive control is melanoma.

Product Images For PMEL Polyclonal Antibody

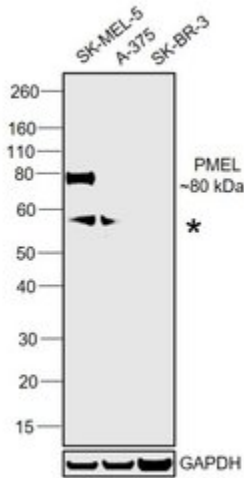


PMEL Antibody (PA5-32491) in IHC

Immunohistochemical analysis of Melanoma using anti-Melanoma Polyclonal Antibody (Product # PA5-32491) in Melanoma Cancer Tissue. The recommended dilution for this antibody in immunohistochemistry applications is 1:50.

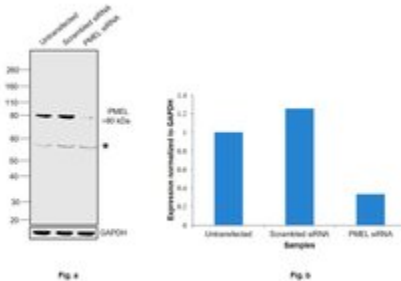
PMEL Antibody (PA5-32491) in WB

Western blot was performed using Anti-PMEL Polyclonal Antibody (Product # PA5-32491) and an 80 kDa band corresponding to PMEL was observed across in SK-MEL-5 in comparison to A-375 and SK-BR-3 which is supposed to be negative. A non-specific band around 58 kDa was also observed. Whole cell extracts (30 μ g lysate) of SK-MEL-5 (Lane 1), A-375 (Lane 2) and SK-BR-3 (Lane 3) were electrophoresed using NuPAGE™ 4-12% Bis-Tris Protein Gel (Product # NP0322BOX). Resolved proteins were then transferred onto a Nitrocellulose membrane (Product # IB23001) by iBlot® 2 Dry Blotting System (Product # IB21001). The blot was probed with the primary antibody (1 μ g/mL) and detected by chemiluminescence with Goat anti-Rabbit IgG (H+L) Superclonal™ Recombinant Secondary Antibody, HRP (Product # A27036, 1:4000 dilution) using the iBright FL 1000 (Product # A32752). Chemiluminescent detection was performed using Novex® ECL Chemiluminescent Substrate Reagent Kit (Product # WP20005).



PMEL Antibody (PA5-32491) in WB

Knockdown of PMEL was achieved by transfecting SK-MEL-5 with PMEL specific siRNAs (Silencer® select Product # s12861, s12859). Western blot analysis (Fig. a) was performed using Whole cell extracts from the PMEL knockdown cells (lane 3), non-targeting scrambled siRNA transfected cells (lane 2) and untransfected cells (lane 1). The blot was probed with PMEL Polyclonal Antibody (Product # PA5-32491, 1 μ g/mL) and Goat anti-Rabbit IgG (H+L) Superclonal™ Recombinant Secondary Antibody, HRP (Product # A27036, 1:4000 dilution). Densitometric analysis of this western blot is shown in histogram (Fig. b). The decrease in signal upon siRNA mediated knockdown confirms that antibody is specific to PMEL.



View more figures on thermofisher.com

Immunofluorescence (1)

Scientific reports

Tissue-engineered 3D melanoma model with blood and lymphatic capillaries for drug development.

"Published figure using PMEL polyclonal antibody (Product # PA5-32491) in Immunofluorescence"

Authors: Bourland J, Fradette J, Auger FA

Species
Not Applicable

Dilution
Not Cited

Year
2018

For Research Use Only. Not for use in diagnostic procedures. Not for resale without express authorization. Products are warranted to operate or perform substantially in conformance with published Product specifications in effect at the time of sale, as set forth in the Production documentation, specifications and/or accompanying package inserts ("Documentation"). No claim of suitability for use in applications regulated by FDA is made. The warranty provided herein is valid only when used by properly trained individuals. Unless otherwise stated in the Documentation, this warranty is limited to one year from date of shipment when the Product is subjected to normal, proper and intended usage. This warranty does not extend to anyone other than the Buyer. Any model or sample furnished to Buyer is merely illustrative of the general type and quality of goods and does not represent that any Product will conform to such model or sample. NO OTHER WARRANTIES, EXPRESS OR IMPLIED, ARE GRANTED INCLUDING WITHOUT LIMITATION, IMPLIED WARRANTIES OF MERCHANTABILITY, FITNESS FOR ANY PARTICULAR PURPOSE, OR NON INFRINGEMENT. BUYER'S EXCLUSIVE REMEDY FOR NON-CONFORMING PRODUCTS DURING THE WARRANTY PERIOD IS LIMITED TO REPAIR, REPLACEMENT OF OR REFUND FOR THE NON-CONFORMING PRODUCT(S) AT SELLER'S SOLE OPTION. THERE IS NO OBLIGATION TO REPAIR, REPLACE OR REFUND FOR PRODUCTS AS THE RESULT OF (I) ACCIDENT, DISASTER OR EVENT OF FORCE MAJEURE, (II) MISUSE, FAULT OR NEGLIGENCE OF OR BY BUYER, (III) USE OF THE PRODUCTS IN A MANNER FOR WHICH THEY WERE NOT DESIGNED, OR (IV) IMPROPER STORAGE AND HANDLING OF THE PRODUCTS. Unless otherwise expressly stated on the Product or in the documentation accompanying the Product, the Product is intended for research only and is not to be used for any other purpose, including without limitation, unauthorized commercial uses, in vitro diagnostic uses, ex vivo or in vivo therapeutic uses, or any type of consumption by or application to human or animals.