

SLC11A2 Polyclonal Antibody

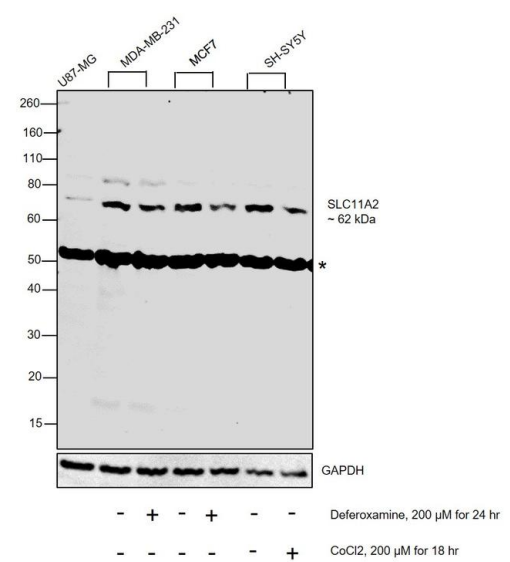
Product Details	
Size	50 µg
Species Reactivity	Human, Non-human primate
Host/Isotype	Rabbit / IgG
Class	Polyclonal
Type	Antibody
Conjugate	Unconjugated
Immunogen	Synthetic 16 amino acid peptide from internal region of human SLC11A2.
Form	Liquid
Concentration	0.9 mg/mL
Purification	Antigen affinity chromatography
Storage buffer	PBS
Contains	0.1% sodium azide
Storage conditions	Store at 4°C short term. For long term storage, store at -20°C, avoiding freeze/thaw cycles.
RRID	AB_2551548

Applications	Tested Dilution	Publications
Western Blot (WB)	1:1,000	-
Immunohistochemistry (Paraffin) (IHC (P))	15-20 µg/mL	-

Product Specific Information

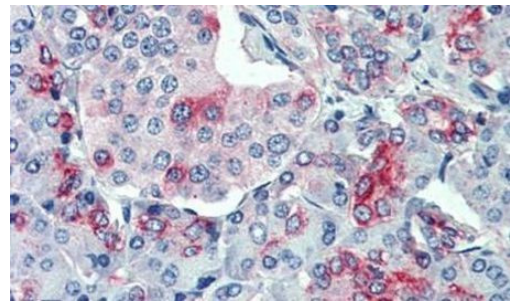
Percent identity with other species by BLAST analysis: Human, Chimpanzee, Gorilla, Orangutan, Gibbon, Monkey, Marmoset (100%) Galago, Rat, Hamster, Bovine, Horse (94%).

Product Images For SLC11A2 Polyclonal Antibody



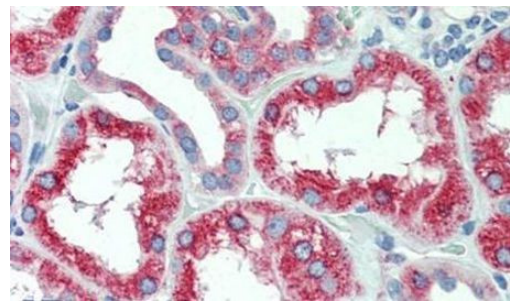
SLC11A2 Antibody (PA5-34195) in WB

Western blot was performed using Anti-SLC11A2 Polyclonal Antibody (Product # PA5-34195) and a 62kDa band corresponding to Natural resistance-associated macrophage protein 2 was observed across cell lines with uncharacterized band (*). Whole cell extracts (30 μg lysate) of U-87 MG (Lane 1), MDA-MB-231 (Lane 2), MDA-MB-231 treated with Deferoxamine, 200 μM for 24 hr (Lane 3), MCF7 (Lane 4), MCF7 treated with Deferoxamine, 200 μM for 24 hr (Lane 5), SH-SY5Y (Lane 6), SH-SY5Y treated with CoCl₂, 200 μM for 18 hr (Lane 7) were electrophoresed using NuPAGE™ 4-12% Bis-Tris Protein Gel (Product # NP0322BOX). Resolved proteins were then transferred onto a nitrocellulose membrane (Product # IB23002) by iBlot® 2 Dry Blotting System (Product # IB21001). The blot was probed with the primary antibody (1:1000) and detected by chemiluminescence with Goat anti-Rabbit IgG (Heavy Chain) Superclonal™ Recombinant Secondary Antibody, HRP (Product # A27036, 1:4000) using the iBright FL 1000 (Product # A32752). Chemiluminescent detection was performed using Novex® ECL Chemiluminescent Substrate Reagent Kit (Product # WP20005).



SLC11A2 Antibody (PA5-34195) in IHC (P)

Immunohistochemical analysis of formalin-fixed paraffin-embedded human, pancreas using a SLC11A2/DMT1 polyclonal antibody (Product # PA5-34195). Heat-induced antigen retrieval was performed prior to staining.



SLC11A2 Antibody (PA5-34195) in IHC (P)

Immunohistochemical analysis of formalin-fixed paraffin-embedded human, kidney using a SLC11A2/DMT1 polyclonal antibody (Product # PA5-34195). Heat-induced antigen retrieval was performed prior to staining.

For Research Use Only. Not for use in diagnostic procedures. Not for resale without express authorization. Products are warranted to operate or perform substantially in conformance with published Product specifications in effect at the time of sale, as set forth in the Production documentation, specifications and/or accompanying package inserts ("Documentation"). No claim of suitability for use in applications regulated by FDA is made. The warranty provided herein is valid only when used by properly trained individuals. Unless otherwise stated in the Documentation, this warranty is limited to one year from date of shipment when the Product is subjected to normal, proper and intended usage. This warranty does not extend to anyone other than the Buyer. Any model or sample furnished to Buyer is merely illustrative of the general type and quality of goods and does not represent that any Product will conform to such model or sample. NO OTHER WARRANTIES, EXPRESS OR IMPLIED, ARE GRANTED INCLUDING WITHOUT LIMITATION, IMPLIED WARRANTIES OF MERCHANTABILITY, FITNESS FOR ANY PARTICULAR PURPOSE, OR NON INFRINGEMENT. BUYER'S EXCLUSIVE REMEDY FOR NON-CONFORMING PRODUCTS DURING THE WARRANTY PERIOD IS LIMITED TO REPAIR, REPLACEMENT OF OR REFUND FOR THE NON-CONFORMING PRODUCT(S) AT SELLER'S SOLE OPTION. THERE IS NO OBLIGATION TO REPAIR, REPLACE OR REFUND FOR PRODUCTS AS THE RESULT OF (i) ACCIDENT, DISASTER OR EVENT OF FORCE MAJEURE, (ii) MISUSE, FAULT OR NEGLIGENCE OF OR BY BUYER, (iii) USE OF THE PRODUCTS IN A MANNER FOR WHICH THEY WERE NOT DESIGNED, OR (iv) IMPROPER STORAGE AND HANDLING OF THE PRODUCTS. Unless otherwise expressly stated on the Product or in the documentation accompanying the Product, the Product is intended for research only and is not to be used for any other purpose, including without limitation, unauthorized commercial uses, in vitro diagnostic uses, ex vivo or in vivo therapeutic uses, or any type of consumption by or application to human or animals.