

# gamma Tubulin Polyclonal Antibody

## Product Details

Size	100 µL
Species Reactivity	Human, Mouse, Rat, Zebrafish
Published Species	Human
Host/Isotype	Rabbit / IgG
Class	Polyclonal
Type	Antibody
Conjugate	Unconjugated
Immunogen	Recombinant fragment corresponding to a region within amino acids 1 and 184 of gamma Tubulin (Uniprot ID#P23258)
Form	Liquid
Concentration	0.24 mg/mL
Purification	Antigen affinity chromatography
Storage buffer	PBS, pH 7, with 1% BSA, 20% glycerol
Contains	0.025% ProClin 300
Storage conditions	Store at 4°C short term. For long term storage, store at -20°C, avoiding freeze/thaw cycles.
RRID	AB_2552167

Applications	Tested Dilution	Publications
Western Blot (WB)	1:500-1:3,000	-
Immunohistochemistry (IHC)	-	1 Publication
Immunohistochemistry (Paraffin) (IHC (P))	1:100-1:1,000	-
Immunohistochemistry (PFA fixed) (IHC (PFA))	Assay-dependent	-
Immunocytochemistry (ICC/IF)	1:100-1:1,000	1 Publication
Immunoprecipitation (IP)	1:100-1:500	-
Miscellaneous PubMed (Misc)	-	1 Publication

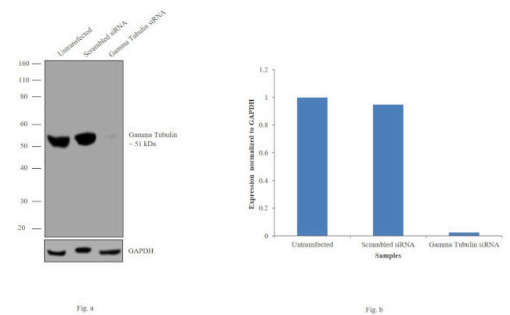
## Product Specific Information

Recommended positive controls: 293T, A431, HeLa, Jurkat, Raji, NCI-H929, NIH3T3, rat kidney.

Predicted reactivity: Mouse (99%), Rat (99%), Zebrafish (98%), Xenopus laevis (99%), Dog (100%), Rhesus Monkey (100%), Chimpanzee (100%), Bovine (100%).

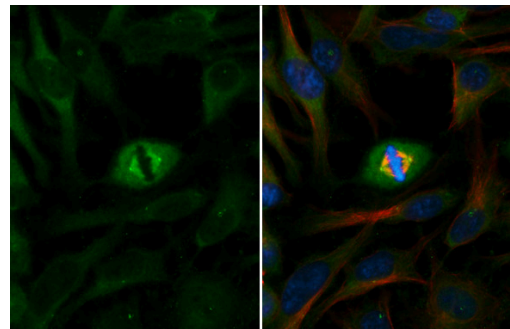
Store product as a concentrated solution. Centrifuge briefly prior to opening the vial.

Product Images For gamma Tubulin Polyclonal Antibody



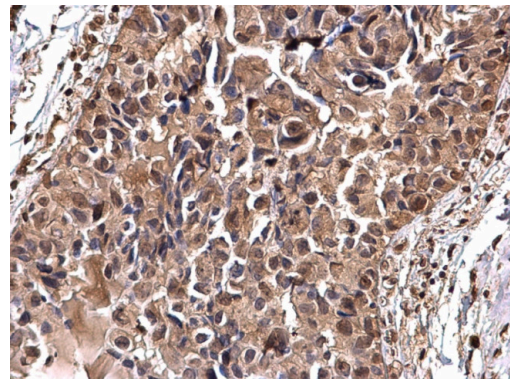
gamma Tubulin Antibody (PA5-34815)

Antibody specificity was demonstrated by siRNA mediated knockdown of target protein. HeLa cells were transfected with gamma Tubulin siRNA and reduction of signal was observed in Western Blot using gamma Tubulin Polyclonal Antibody (Product # PA5-34815). {KD}



gamma Tubulin Antibody (PA5-34815) in ICC/IF

gamma Tubulin Polyclonal Antibody detects gamma Tubulin protein at centrosome by immunofluorescent analysis. Sample: HeLa cells were fixed in ice-cold MeOH for 5 min. Green: gamma Tubulin stained by gamma Tubulin Polyclonal Antibody (Product # PA5-34815) diluted at 1:1,000. Red: alpha Tubulin, stained by alpha Tubulin Polyclonal Antibody [GT114] (Product # MA5-31466) diluted at 1:500. Blue: Fluoroshield with DAPI .



gamma Tubulin Antibody (PA5-34815) in IHC (P)

gamma Tubulin Polyclonal Antibody detects gamma Tubulin protein at nucleus on human breast carcinoma by immunohistochemical analysis. Sample: Paraffin-embedded human breast carcinoma. Gamma Tubulin Polyclonal Antibody (Product # PA5-34815) dilution: 1:500. Antigen Retrieval: EDTA based buffer, pH 8.0, 15 min.

[View more figures on thermofisher.com](https://www.thermofisher.com)

Immunohistochemistry (1)

<p><b>BMC cell biology</b></p> <p><b>A novel interaction between kinase activities in regulation of cilia formation.</b></p> <p>"PA5-34815 was used in Immunohistochemistry to demonstrate a complex interplay between Nek2 and AurA kinases in regulation of ciliation in ARPE-19 cells."</p> <p>Authors: DeVaul N,Koloustroubis K,Wang R,Sperry AO</p>	<p><b>Year</b> 2017</p> <p><b>Species</b> Human</p>
--	---

Immunocytochemistry (1)

<p><b>BMC molecular and cell biology</b></p> <p><b>The PP1 regulator PPP1R2 coordinately regulates AURKA and PP1 to control centrosome phosphorylation and maintain central spindle architecture.</b></p> <p>"PA5-34815 was used in Immunocytochemistry-immunofluorescence to reveal the involvement of protein phosphatase 1 regulatory subunit 2 in coordinating protein phosphatase 1 and AURKA activity during cytokinesis."</p> <p>Authors: Bresch AM,Yerich N,Wang R,Sperry AO</p>	<p><b>Year</b> 2020</p> <p><b>Species</b> Human</p> <p><b>Dilution</b> 1:50</p>
--	---

Miscellaneous PubMed (1)

<p><b>Nature communications</b></p> <p><b>Phosphoproteomic analysis of neoadjuvant breast cancer suggests that increased sensitivity to paclitaxel is driven by CDK4 and filamin A.</b></p> <p>"PA5-34815 was used in Immunocytochemistry, Immunohistochemistry (Paraffin), Immunohistochemistry (PFA fixed), Immunoprecipitation, Western Blot, Sample Prep to find candidate biomarkers of paclitaxel sensitivity using phosphoproteomic screening of samples from HER2-negative female breast cancer receiving neoadjuvant paclitaxel."</p> <p>Authors: Mouron S,Bueno MJ,Lluch A,Manso L,Calvo I,Cortes J,Garcia-Saenz JA,Gil-Gil M,Martinez-Janez N,Apala JV, Caleiras E,Ximénez-Embún P,Muñoz J,Gonzalez-Cortijo L,Murillo R,Sánchez-Bayona R,Cejalvo JM,Gómez-López G, Fustero-Torre C,Sabroso-Lasa S,Malats N,Martinez M,Moreno A,Megias D,Malumbres M,Colomer R,Quintela-Fandino M</p>	<p><b>Year</b> 2022</p> <p><b>Species</b> Human</p> <p><b>Dilution</b> 1:1000</p>
---	---

For Research Use Only. Not for use in diagnostic procedures. Not for resale without express authorization. Products are warranted to operate or perform substantially in conformance with published Product specifications in effect at the time of sale, as set forth in the Production documentation, specifications and/or accompanying package inserts ("Documentation"). No claim of suitability for use in applications regulated by FDA is made. The warranty provided herein is valid only when used by properly trained individuals. Unless otherwise stated in the Documentation, this warranty is limited to one year from date of shipment when the Product is subjected to normal, proper and intended usage. This warranty does not extend to anyone other than the Buyer. Any model or sample furnished to Buyer is merely illustrative of the general type and quality of goods and does not represent that any Product will conform to such model or sample. NO OTHER WARRANTIES, EXPRESS OR IMPLIED, ARE GRANTED INCLUDING WITHOUT LIMITATION, IMPLIED WARRANTIES OF MERCHANTABILITY, FITNESS FOR ANY PARTICULAR PURPOSE, OR NON INFRINGEMENT. BUYER'S EXCLUSIVE REMEDY FOR NON-CONFORMING PRODUCTS DURING THE WARRANTY PERIOD IS LIMITED TO REPAIR, REPLACEMENT OF OR REFUND FOR THE NON-CONFORMING PRODUCT(S) AT SELLER'S SOLE OPTION. THERE IS NO OBLIGATION TO REPAIR, REPLACE OR REFUND FOR PRODUCTS AS THE RESULT OF (I) ACCIDENT, DISASTER OR EVENT OF FORCE MAJEURE, (II) MISUSE, FAULT OR NEGLIGENCE OF OR BY BUYER, (III) USE OF THE PRODUCTS IN A MANNER FOR WHICH THEY WERE NOT DESIGNED, OR (IV) IMPROPER STORAGE AND HANDLING OF THE PRODUCTS. Unless otherwise expressly stated on the Product or in the documentation accompanying the Product, the Product is intended for research only and is not to be used for any other purpose, including without limitation, unauthorized commercial uses, in vitro diagnostic uses, ex vivo or in vivo therapeutic uses, or any type of consumption by or application to human or animals.