

# ATG5 Polyclonal Antibody

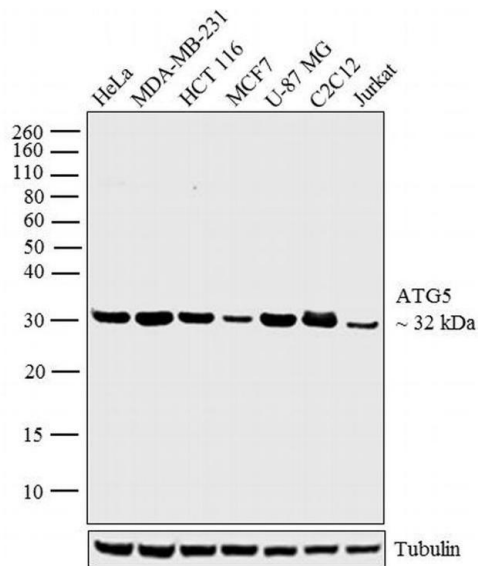
Product Details	
Size	400 µL
Species Reactivity	Human, Mouse
Published Species	Rodent, Mouse
Host/Isotype	Rabbit / IgG
Class	Polyclonal
Type	Antibody
Conjugate	Unconjugated
Immunogen	KLH conjugated synthetic peptide between 1-30 amino acids from the N-terminal region of human ATG5
Form	Liquid
Concentration	2 mg/mL
Purification	Protein A, Affinity chromatography
Storage buffer	PBS
Contains	0.09% sodium azide
Storage conditions	-20° C, Avoid Freeze/Thaw Cycles
RRID	AB_2552511

Applications	Tested Dilution	Publications
Western Blot (WB)	1:1,000	4 Publications
Immunohistochemistry (Paraffin) (IHC (P))	1:500	-
Immunocytochemistry (ICC/IF)	1:200	1 Publication

## Product Specific Information

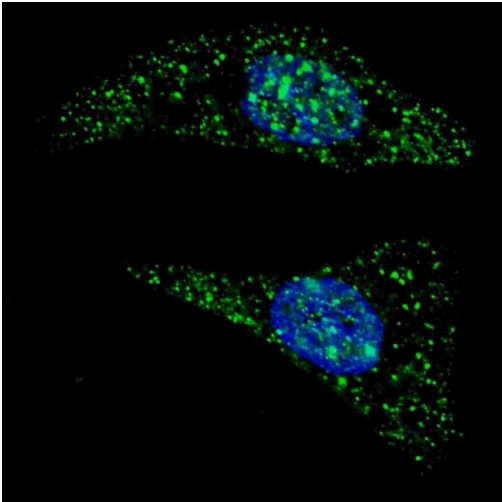
This antibody is predicted to react with bovine, porcine and rat based on sequence homology.

Product Images For ATG5 Polyclonal Antibody



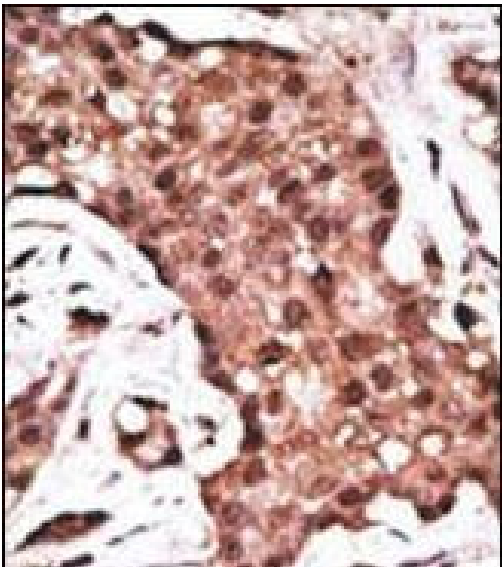
ATG5 Antibody (PA5-35201) in WB

Western blot analysis was performed on whole cell extracts (30 µg lysate) of HeLa (Lane 1), MDA-MB-231 (Lane 2), HCT 116 (Lane 3), MCF7 (Lane 4), U-87 MG (Lane 5), C2C12 (Lane 6) and Jurkat (Lane 7). The blot was probed with Anti-ATG5 Polyclonal Antibody (Product # PA5-35201, 1:1000 dilution) and detected by chemiluminescence using Goat anti-Rabbit IgG (Heavy Chain) Superclonal™ Secondary Antibody, HRP conjugate (Product # A27036, 0.25 µg/mL, 1:4000 dilution). A 32 kDa band corresponding to ATG5 was observed across the cell lines tested.



ATG5 Antibody (PA5-35201) in ICC/IF

Immunofluorescent analysis of ATG5 showing staining in the cytoplasm of U-251 cells. U251 cells were treated with Chloroquine (50µM, 16h), fixed with 4% PFA (20 min) and permeabilized with Triton X-100 (0.2%, 30 min). Cells were probed with an ATG5 polyclonal antibody (Product # PA5-35201) (1:100, 2h at room temperature) followed by detection using a fluorescent conjugated secondary antibody (green) (1:1000, 1h). Nuclei were stained with Hoechst 33342 (blue) (10 µg/mL, 5 min).



ATG5 Antibody (PA5-35201) in IHC (P)

Immunohistochemistry analysis of ATG5 in formalin-fixed, paraffin-embedded human cancer tissue using an ATG5 polyclonal antibody (Product # PA5-35201) followed by DAB staining. BC = breast carcinoma; HC = hepatocarcinoma.

🔍 5 References

Western Blot (4)

<p>American journal of translational research</p> <p><b>Knockdown of VDAC1 alleviates the cognitive dysfunction secondary to sepsis-associated encephalopathy.</b></p> <p>"PA5-35201 was used in Western Blot to elucidate the underlying mechanisms where knockdown of voltage dependent anion channel (VDAC1) alleviates the cognitive dysfunction caused by sepsis-associated encephalopathy."</p> <p>Authors: Cai M,Du B,Si Y,Miao J,Ge J,Zhang J,Song J,Bao H</p>	<p><b>Year</b> 2021</p> <p><b>Species</b> Mouse</p> <p><b>Dilution</b> 1:1000</p>
<p>Autophagy</p> <p><b>Autophagy core protein ATG5 is required for elongating spermatid development, sperm individualization and normal fertility in male mice.</b></p> <p>"PA5-35201 was used in Immunocytochemistry to examine the function of ATG5, a core autophagy protein in male germ cell development."</p> <p>Authors: Huang Q,Liu Y,Zhang S,Yap YT,Li W,Zhang D,Gardner A,Zhang L,Song S,Hess RA,Zhang Z</p>	<p><b>Year</b> 2021</p> <p><b>Species</b> Mouse</p> <p><b>Dilution</b> 1:100</p>

View more WB references on thermofisher.com

Immunocytochemistry (1)

<p>Autophagy</p> <p><b>Autophagy core protein ATG5 is required for elongating spermatid development, sperm individualization and normal fertility in male mice.</b></p> <p>"PA5-35201 was used in Immunocytochemistry to examine the function of ATG5, a core autophagy protein in male germ cell development."</p> <p>Authors: Huang Q,Liu Y,Zhang S,Yap YT,Li W,Zhang D,Gardner A,Zhang L,Song S,Hess RA,Zhang Z</p>	<p><b>Year</b> 2021</p> <p><b>Species</b> Mouse</p> <p><b>Dilution</b> 1:100</p>
--	--

More applications with references on thermofisher.com

For Research Use Only. Not for use in diagnostic procedures. Not for resale without express authorization. Products are warranted to operate or perform substantially in conformance with published Product specifications in effect at the time of sale, as set forth in the Production documentation, specifications and/or accompanying package inserts ("Documentation"). No claim of suitability for use in applications regulated by FDA is made. The warranty provided herein is valid only when used by properly trained individuals. Unless otherwise stated in the Documentation, this warranty is limited to one year from date of shipment when the Product is subjected to normal, proper and intended usage. This warranty does not extend to anyone other than the Buyer. Any model or sample furnished to Buyer is merely illustrative of the general type and quality of goods and does not represent that any Product will conform to such model or sample. NO OTHER WARRANTIES, EXPRESS OR IMPLIED, ARE GRANTED INCLUDING WITHOUT LIMITATION, IMPLIED WARRANTIES OF MERCHANTABILITY, FITNESS FOR ANY PARTICULAR PURPOSE, OR NON INFRINGEMENT. BUYER'S EXCLUSIVE REMEDY FOR NON-CONFORMING PRODUCTS DURING THE WARRANTY PERIOD IS LIMITED TO REPAIR, REPLACEMENT OF OR REFUND FOR THE NON-CONFORMING PRODUCT(S) AT SELLER'S SOLE OPTION. THERE IS NO OBLIGATION TO REPAIR, REPLACE OR REFUND FOR PRODUCTS AS THE RESULT OF (i) ACCIDENT, DISASTER OR EVENT OF FORCE MAJEURE, (ii) MISUSE, FAULT OR NEGLIGENCE OF OR BY BUYER, (iii) USE OF THE PRODUCTS IN A MANNER FOR WHICH THEY WERE NOT DESIGNED, OR (iv) IMPROPER STORAGE AND HANDLING OF THE PRODUCTS. Unless otherwise expressly stated on the Product or in the documentation accompanying the Product, the Product is intended for research only and is not to be used for any other purpose, including without limitation, unauthorized commercial uses, in vitro diagnostic uses, ex vivo or in vivo therapeutic uses, or any type of consumption by or application to human or animals.