

# CTDSP1 Polyclonal Antibody

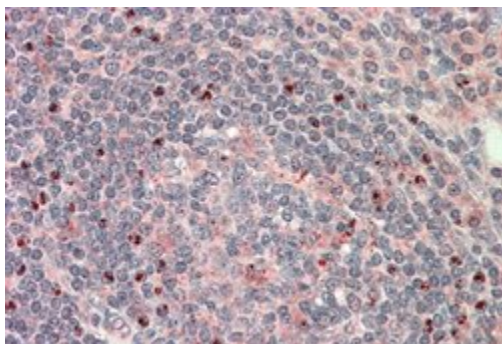
Product Details	
Size	100 µg
Species Reactivity	Human, Mouse
Host/Isotype	Goat / IgG
Class	Polyclonal
Type	Antibody
Conjugate	Unconjugated
Immunogen	Peptide with sequence EAKAQDSDKIC, from the internal region of CTDSP1
Form	Liquid
Concentration	0.5 mg/mL
Purification	Antigen affinity chromatography
Storage buffer	TBS, pH 7.3, with 0.5% BSA
Contains	0.02% sodium azide
Storage Conditions	-20°C
RRID	AB_2554565

Applications	Tested Dilution	Publications
Western Blot (WB)	0.1-0.3 µg/mL	-
Immunohistochemistry (IHC)	5-10 µg/mL	-
Immunohistochemistry (Paraffin) (IHC (P))	5-10 µg/mL	-

## Product Specific Information

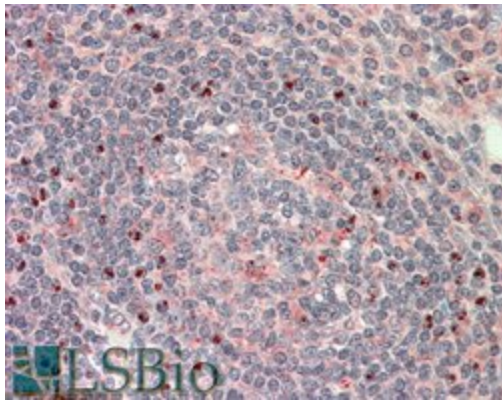
This antibody is predicted to react with rat, dog and cow based on sequence homology.

## Product Images For CTDSP1 Polyclonal Antibody



### CTDSP1 Antibody (PA5-37961) in IHC (P)

Immunohistochemical analysis of CTDSP1/NIF3 in paraffin-embedded human tonsil following steamed antigen retrieval with a citrate buffer, pH 6, using a CTDSP1/NIF3 polyclonal antibody (Product # PA5-37961) at a dilution of 5 µg/mL. Detection was performed using an AP-conjugated secondary antibody.



### **CTDSP1 Antibody (PA5-37961) in IHC (P)**

Immunohistochemical analysis of CTDSP1 in paraffin embedded human tonsil using a CTDSP1 polyclonal antibody (Product #PA5-37961) at a concentration of 5  $\mu\text{g}/\text{mL}$ . Steamed antigen retrieval was performed with pH 6 buffered citrate. Samples were then stained with alkaline phosphatase.



### CTDSP1 Antibody (PA5-37961) in WB

Western blot of CTDSP1/NIF3 in mouse testis lysate was performed using 35 µg protein in RIPA buffer. Lysates were probed with a CTDSP1/NIF3 polyclonal antibody (Product # PA5-37961) at a dilution of 0.1 µg/mL and incubated for 1 hour, followed by chemiluminescent detection.

For Research Use Only. Not for use in diagnostic procedures. Not for resale without express authorization. Products are warranted to operate or perform substantially in conformance with published Product specifications in effect at the time of sale, as set forth in the Production documentation, specifications and/or accompanying package inserts ("Documentation"). No claim of suitability for use in applications regulated by FDA is made. The warranty provided herein is valid only when used by properly trained individuals. Unless otherwise stated in the Documentation, this warranty is limited to one year from date of shipment when the Product is subjected to normal, proper and intended usage. This warranty does not extend to anyone other than the Buyer. Any model or sample furnished to Buyer is merely illustrative of the general type and quality of goods and does not represent that any Product will conform to such model or sample. NO OTHER WARRANTIES, EXPRESS OR IMPLIED, ARE GRANTED INCLUDING WITHOUT LIMITATION, IMPLIED WARRANTIES OF MERCHANTABILITY, FITNESS FOR ANY PARTICULAR PURPOSE, OR NON INFRINGEMENT. BUYER'S EXCLUSIVE REMEDY FOR NON-CONFORMING PRODUCTS DURING THE WARRANTY PERIOD IS LIMITED TO REPAIR, REPLACEMENT OF OR REFUND FOR THE NON-CONFORMING PRODUCT(S) AT SELLER'S SOLE OPTION. THERE IS NO OBLIGATION TO REPAIR, REPLACE OR REFUND FOR PRODUCTS AS THE RESULT OF (I) ACCIDENT, DISASTER OR EVENT OF FORCE MAJEURE, (II) MISUSE, FAULT OR NEGLIGENCE OF OR BY BUYER, (III) USE OF THE PRODUCTS IN A MANNER FOR WHICH THEY WERE NOT DESIGNED, OR (IV) IMPROPER STORAGE AND HANDLING OF THE PRODUCTS. Unless otherwise expressly stated on the Product or in the documentation accompanying the Product, the Product is intended for research only and is not to be used for any other purpose, including without limitation, unauthorized commercial uses, in vitro diagnostic uses, ex vivo or in vivo therapeutic uses, or any type of consumption by or application to human or animals.