

CCDC3 Polyclonal Antibody

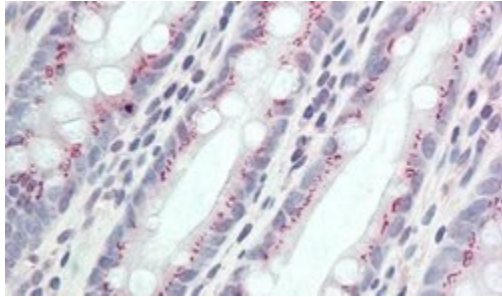
Product Details	
Size	100 µg
Species Reactivity	Human
Host/Isotope	Goat / IgG
Class	Polyclonal
Type	Antibody
Conjugate	Unconjugated
Immunogen	Peptide with sequence C-PHGVNFQDAIFPDTQ, from the internal region of CCDC3 (aa134-148)
Form	Liquid
Concentration	0.5 mg/mL
Purification	Antigen affinity chromatography
Storage buffer	TBS, pH 7.3, with 0.5% BSA
Contains	0.02% sodium azide
Storage Conditions	-20°C
RRID	AB_2554584

Applications	Tested Dilution	Publications
Immunohistochemistry (IHC)	5 µg/mL	-
Western Blot (WB)	0.5-1 µg/mL	-

Product Specific Information

This antibody is predicted to react with mouse, rat, dog, pig and cow based on sequence homology.

Product Images For CCDC3 Polyclonal Antibody

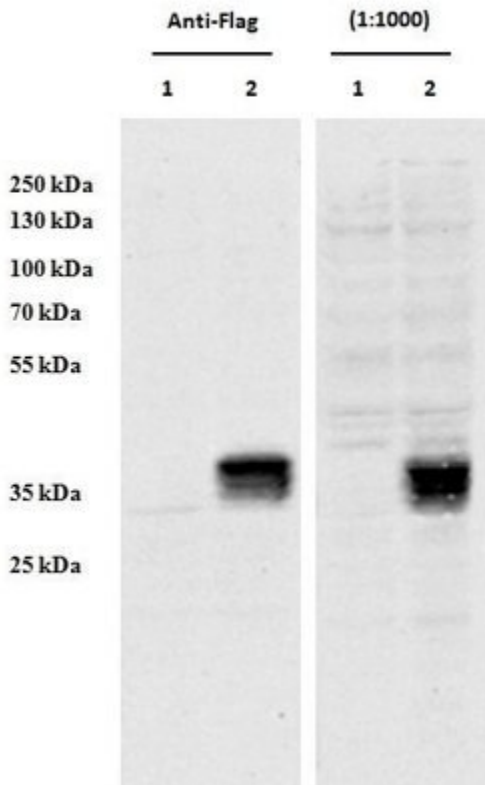


CCDC3 Antibody (PA5-37980) in IHC

Immunohistochemical analysis of CCDC3 in Human Colon using a CCDC3 monoclonal antibody (Product #PA5-37980) at 5 µg/mL. The Human Colon tissue section was paraffin embedded and detected using steamed antigen retrieval with citrate buffer pH 6, AP-staining.

CCDC3 Antibody (PA5-37980) in WB

Western blot of CCDC3 in HEK293 overexpressing human CCDC3 with C-terminal tag (DYKDDDDK). Lysates were probed with a DYKDDDDK antibody in the left panel and with a CCDC3 polyclonal antibody (Product # PA5-37980) at a dilution of 0.5 µg/mL (1:1000) in the right panel. Lane 1 on each panel shows empty vector transfection.



For Research Use Only. Not for use in diagnostic procedures. Not for resale without express authorization. Products are warranted to operate or perform substantially in conformance with published Product specifications in effect at the time of sale, as set forth in the Production documentation, specifications and/or accompanying package inserts ("Documentation"). No claim of suitability for use in applications regulated by FDA is made. The warranty provided herein is valid only when used by properly trained individuals. Unless otherwise stated in the Documentation, this warranty is limited to one year from date of shipment when the Product is subjected to normal, proper and intended usage. This warranty does not extend to anyone other than the Buyer. Any model or sample furnished to Buyer is merely illustrative of the general type and quality of goods and does not represent that any Product will conform to such model or sample. NO OTHER WARRANTIES, EXPRESS OR IMPLIED, ARE GRANTED INCLUDING WITHOUT LIMITATION, IMPLIED WARRANTIES OF MERCHANTABILITY, FITNESS FOR ANY PARTICULAR PURPOSE, OR NON INFRINGEMENT. BUYER'S EXCLUSIVE REMEDY FOR NON-CONFORMING PRODUCTS DURING THE WARRANTY PERIOD IS LIMITED TO REPAIR, REPLACEMENT OF OR REFUND FOR THE NON-CONFORMING PRODUCT(S) AT SELLER'S SOLE OPTION. THERE IS NO OBLIGATION TO REPAIR, REPLACE OR REFUND FOR PRODUCTS AS THE RESULT OF (I) ACCIDENT, DISASTER OR EVENT OF FORCE MAJEURE, (II) MISUSE, FAULT OR NEGLIGENCE OF OR BY BUYER, (III) USE OF THE PRODUCTS IN A MANNER FOR WHICH THEY WERE NOT DESIGNED, OR (IV) IMPROPER STORAGE AND HANDLING OF THE PRODUCTS. Unless otherwise expressly stated on the Product or in the documentation accompanying the Product, the Product is intended for research only and is not to be used for any other purpose, including without limitation, unauthorized commercial uses, in vitro diagnostic uses, ex vivo or in vivo therapeutic uses, or any type of consumption by or application to human or animals.