

# IL1RL2 Polyclonal Antibody

Product Details	
Size	100 µg
Species Reactivity	Human, Mouse, Rat
Host/Isotope	Rabbit / IgG
Class	Polyclonal
Type	Antibody
Conjugate	Unconjugated
Immunogen	16 amino acid peptide near the center of human IL-1RL2
Form	Liquid
Concentration	1 mg/mL
Purification	Antigen affinity chromatography
Storage buffer	PBS
Contains	0.02% sodium azide
Storage Conditions	Maintain refrigerated at 2-8°C for up to 3 months. For long term storage store at -20°C
RRID	AB_2554617

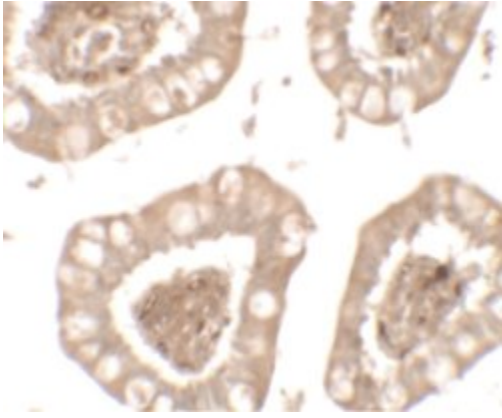
Applications	Tested Dilution	Publications
Immunofluorescence (IF)	20 µg/mL	-
Immunohistochemistry (Paraffin) (IHC (P))	Assay-Dependent	-
Western Blot (WB)	1-2 µg/mL	-

## Product Specific Information

A recommended positive control is human small intestine tissue lysate.

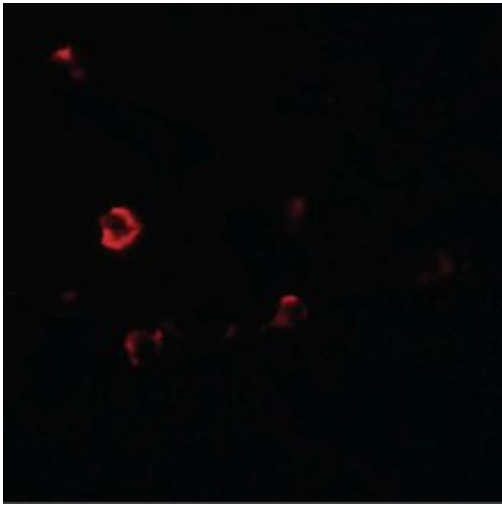
At least three isoforms of IL-1RL2 are known to exist; this antibody will detect all three isoforms. IL-1RL2 antibody is not expected to cross-react with IL-1R or IL-1RL1.

## Product Images For IL1RL2 Polyclonal Antibody



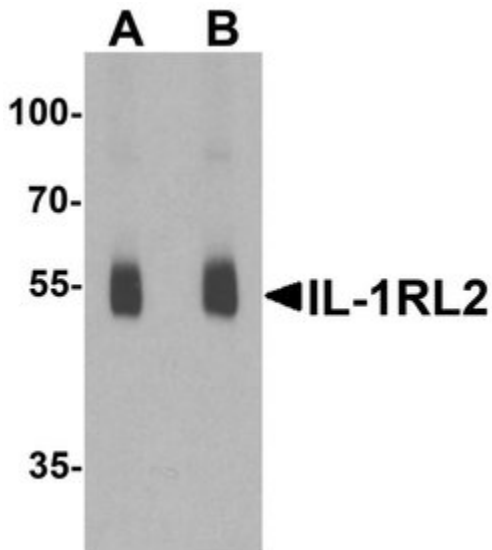
### IL1RL2 Antibody (PA5-38013) in IHC (P)

Immunohistochemistry analysis of IL1RL2 in paraffin-embedded human small intestine tissue using an IL1RL2 polyclonal antibody (Product # PA5-38013) at a dilution of 5  $\mu\text{g}/\text{mL}$ .



### IL1RL2 Antibody (PA5-38013) in IHC

Immunofluorescent analysis of IL1RL2 in human small intestine tissue using an IL1RL2 polyclonal antibody (Product # PA5-38013) at a dilution of 20  $\mu\text{g}/\text{mL}$ .



### IL1RL2 Antibody (PA5-38013) in WB

Western blot analysis of IL1RL2 in human small intestine lysate using an IL1RL2 polyclonal antibody (Product # PA5-38013) at a dilution of 1  $\mu\text{g}/\text{mL}$  (A) and 2  $\mu\text{g}/\text{mL}$  (B).

For Research Use Only. Not for use in diagnostic procedures. Not for resale without express authorization. Products are warranted to operate or perform substantially in conformance with published Product specifications in effect at the time of sale, as set forth in the Production documentation, specifications and/or accompanying package inserts ("Documentation"). No claim of suitability for use in applications regulated by FDA is made. The warranty provided herein is valid only when used by properly trained individuals. Unless otherwise stated in the Documentation, this warranty is limited to one year from date of shipment when the Product is subjected to normal, proper and intended usage. This warranty does not extend to anyone other than the Buyer. Any model or sample furnished to Buyer is merely illustrative of the general type and quality of goods and does not represent that any Product will conform to such model or sample. NO OTHER WARRANTIES, EXPRESS OR IMPLIED, ARE GRANTED INCLUDING WITHOUT LIMITATION, IMPLIED WARRANTIES OF MERCHANTABILITY, FITNESS FOR ANY PARTICULAR PURPOSE, OR NON INFRINGEMENT. BUYER'S EXCLUSIVE REMEDY FOR NON-CONFORMING PRODUCTS DURING THE WARRANTY PERIOD IS LIMITED TO REPAIR, REPLACEMENT OF OR REFUND FOR THE NON-CONFORMING PRODUCT(S) AT SELLER'S SOLE OPTION. THERE IS NO OBLIGATION TO REPAIR, REPLACE OR REFUND FOR PRODUCTS AS THE RESULT OF (I) ACCIDENT, DISASTER OR EVENT OF FORCE MAJEURE, (II) MISUSE, FAULT OR NEGLIGENCE OF OR BY BUYER, (III) USE OF THE PRODUCTS IN A MANNER FOR WHICH THEY WERE NOT DESIGNED, OR (IV) IMPROPER STORAGE AND HANDLING OF THE PRODUCTS. Unless otherwise expressly stated on the Product or in the documentation accompanying the Product, the Product is intended for research only and is not to be used for any other purpose, including without limitation, unauthorized commercial uses, in vitro diagnostic uses, ex vivo or in vivo therapeutic uses, or any type of consumption by or application to human or animals.