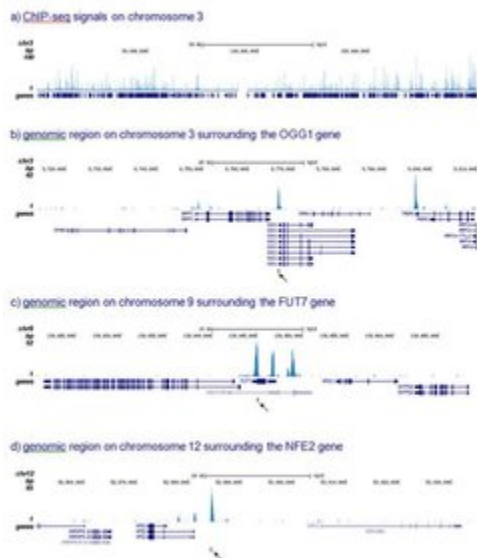


# RUNX1T1 Polyclonal Antibody

Product Details	
Size	100 µL
Species Reactivity	Human
Host/Isotype	Rabbit / IgG
Class	Polyclonal
Type	Antibody
Conjugate	Unconjugated
Immunogen	Two KLH-conjugated synthetic peptides containing sequences from the N-terminal and the central region of the protein, respectively corresponding to human ETO (runt-related transcription factor 1; translocated to, 1 (cyclin D-related).
Form	Liquid
Concentration	Lot-Specific
Storage buffer	whole serum
Contains	0.05% sodium azide
Storage conditions	-20°C or -80°C if preferred
RRID	AB_2608090

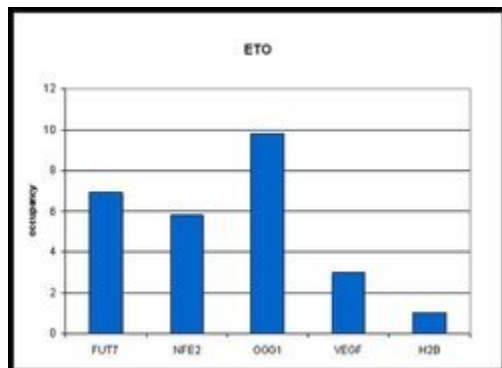
Applications	Tested Dilution	Publications
ELISA (ELISA)	1:1,300	-
ChIP assay (ChIP)	4 µL	-
ChIP-sequencing (ChIP-Seq)	Assay-dependent	-

## Product Images For RUNX1T1 Polyclonal Antibody



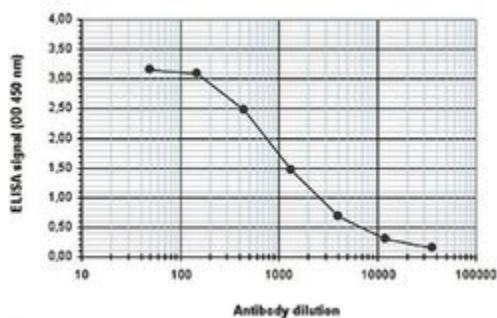
### RUNX1T1 Antibody (PA5-40064) in ChIP-seq

ChIP assays were performed on SKNO-1 cells using a RUNX1T1/ETO polyclonal antibody (Product # PA5-40064) and optimized primer pairs for qPCR. Sheared chromatin from 1.25 million cells and 4  $\mu$ l of antibody were used per ChIP experiment. QPCR was performed on primers specific for the FUT7, NFE2, OGG1 and VEGF genes. The IP'd DNA of 6 ChIPs was pooled and analyzed with a Genome Analyzer. The 32 bp tags were aligned to the human reference genome (hg18) using the ELAND algorithm. Figure 2 shows the results of the complete chromosome 3 and three genomic regions surrounding the OGG1, FUT7 and NFE2 genes, respectively. The position of the PCR amplicon is indicated with an arrow.



### RUNX1T1 Antibody (PA5-40064) in ChIP

ChIP assays were performed on SKNO-1 cells using a RUNX1T1/ETO polyclonal antibody (Product # PA5-40064) and optimized primer pairs for qPCR. Sheared chromatin from 1.25 million cells and 4  $\mu$ l of antibody were used per ChIP experiment. QPCR was performed on primers specific for the FUT7, NFE2, OGG1 and VEGF genes. Figure 1 shows the occupancy, calculated as the ratio + control /background for which the H2B gene was used.



### RUNX1T1 Antibody (PA5-40064) in ELISA

To determine the titer of the antibody, an ELISA was performed using a serial dilution of the anti-human ETO antibody (Product # PA5-40064). The plates were coated with the peptides used for immunization of the rabbit. By plotting the absorbance against the antibody dilution (Figure 3), the titer of the antibody was estimated to be 1:1,300.

For Research Use Only. Not for use in diagnostic procedures. Not for resale without express authorization. Products are warranted to operate or perform substantially in conformance with published Product specifications in effect at the time of sale, as set forth in the Production documentation, specifications and/or accompanying package inserts ("Documentation"). No claim of suitability for use in applications regulated by FDA is made. The warranty provided herein is valid only when used by properly trained individuals. Unless otherwise stated in the Documentation, this warranty is limited to one year from date of shipment when the Product is subjected to normal, proper and intended usage. This warranty does not extend to anyone other than the Buyer. Any model or sample furnished to Buyer is merely illustrative of the general type and quality of goods and does not represent that any Product will conform to such model or sample. NO OTHER WARRANTIES, EXPRESS OR IMPLIED, ARE GRANTED INCLUDING WITHOUT LIMITATION, IMPLIED WARRANTIES OF MERCHANTABILITY, FITNESS FOR ANY PARTICULAR PURPOSE, OR NON INFRINGEMENT. BUYER'S EXCLUSIVE REMEDY FOR NON-CONFORMING PRODUCTS DURING THE WARRANTY PERIOD IS LIMITED TO REPAIR, REPLACEMENT OF OR REFUND FOR THE NON-CONFORMING PRODUCT(S) AT SELLER'S SOLE OPTION. THERE IS NO OBLIGATION TO REPAIR, REPLACE OR REFUND FOR PRODUCTS AS THE RESULT OF (I) ACCIDENT, DISASTER OR EVENT OF FORCE MAJEURE, (II) MISUSE, FAULT OR NEGLIGENCE OF OR BY BUYER, (III) USE OF THE PRODUCTS IN A MANNER FOR WHICH THEY WERE NOT DESIGNED, OR (IV) IMPROPER STORAGE AND HANDLING OF THE PRODUCTS. Unless otherwise expressly stated on the Product or in the documentation accompanying the Product, the Product is intended for research only and is not to be used for any other purpose, including without limitation, unauthorized commercial uses, in vitro diagnostic uses, ex vivo or in vivo therapeutic uses, or any type of consumption by or application to human or animals.