

GCLC Polyclonal Antibody

Product Details	
Size	100 µL
Species Reactivity	Human, Mouse
Published Species	Mouse
Host/Isotype	Rabbit / IgG
Class	Polyclonal
Type	Antibody
Conjugate	Unconjugated
Immunogen	Synthetic peptide directed towards the N-terminal of human GCLC
Form	Liquid
Concentration	0.5 mg/mL
Purification	Affinity Chromatography
Storage buffer	PBS with 2% sucrose
Contains	0.09% sodium azide
Storage conditions	-20° C, Avoid Freeze/Thaw Cycles
RRID	AB_2608691

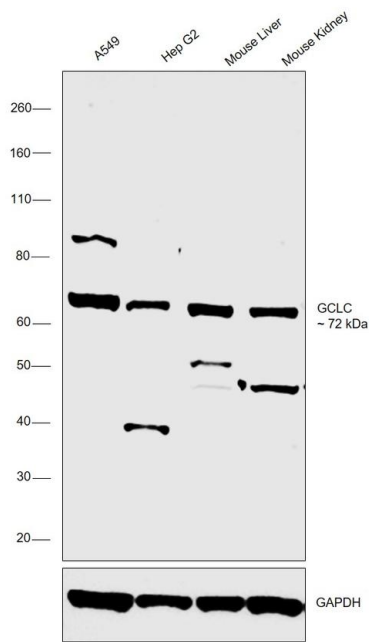
Applications	Tested Dilution	Publications
Western Blot (WB)	1:1,000	1 Publication
Immunohistochemistry (Paraffin) (IHC (P))	1:200	-
Surface plasmon resonance (SPR)	Assay-dependent	-

Product Specific Information

Peptide sequence: VLETLQEKGE RTNPNHPTLW RPEYGSYMIE GTPGQPYGGT MSEFNTVEAN

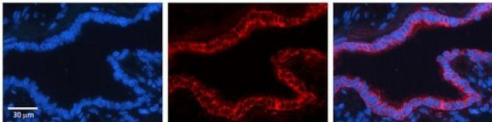
Sequence homology: Cow: 100%; Dog: 100%; Guinea Pig: 100%; Horse: 93%; Human: 100%; Mouse: 100%; Rabbit: 100%; Rat: 100%; Zebrafish: 79%

Product Images For GCLC Polyclonal Antibody



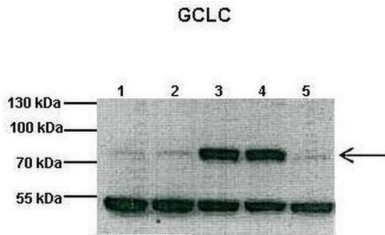
GCLC Antibody (PA5-44189) in WB

Western blot was performed using Anti-GCLC Polyclonal Antibody (Product # PA5-44189) and a 72 kDa band corresponding to GCLC was observed across all the cell lines and tissue tested. Whole cell extracts (30 µg lysate) of A549 (Lane 1), Hep G2 (Lane 2), tissue extracts of Mouse Liver (Lane 3) and Mouse Kidney (Lane 4) were electrophoresed using Novex® NuPAGE® 4-12% Bis-Tris Protein Gel (Product # NP0321BOX). Resolved proteins were then transferred onto a nitrocellulose membrane (Product # IB23001) by iBlot® 2 Dry Blotting System (Product # IB21001). The blot was probed with the primary antibody (0.4 µg/mL) and detected by chemiluminescence with Goat anti-Rabbit IgG (Heavy Chain), Superclonal™ Recombinant Secondary Antibody, HRP (Product # A27036, 1:4,000 dilution) using the iBright FL 1000 (Product # A32752). Chemiluminescent detection was performed using Novex® ECL Chemiluminescent Substrate Reagent Kit (Product # WP20005).



GCLC Antibody (PA5-44189) in IHC (P)

Immunohistochemistry (paraffin-embedded) analysis of human bronchial epithelial tissue using an anti-GCLC polyclonal antibody (Product # PA5-44189).; Secondary Antibody: Donkey anti-Rabbit-Cy3.



GCLC Antibody (PA5-44189) in WB

Western blot analysis of mouse heart cell lysate using an anti-GCLC polyclonal antibody (Product # PA5-44189). Primary Antibody Dilution: 1:1000; Secondary Antibody: Anti-rabbit HRP; Secondary Antibody Dilution: 1:10000. LANE 1) 40µg mouse heart lysate; LANE 2) 40µg mouse heart lysate; LANE 3) 40µg mouse heart lysate; LANE 4) 40µg mouse heart lysate; LANE 5) 40µg mouse heart lysate.

See Immunoblot 2 Data and customer Feedback for more Information

View more figures on thermofisher.com

Western Blot (1)

Redox biology	Year 2018
Defective protein repair under methionine sulfoxide A deletion drives autophagy and ARE-dependent gene transcription.	Species Mouse
"Published figure using GCLC polyclonal antibody (Product # PA5-44189) in Western Blot"	Dilution 1:1000
Authors: Pennington SM,Klutho PR,Xie L,Broadhurst K,Koval OM,McCormick ML,Spitz DR,Grumbach IM	

For Research Use Only. Not for use in diagnostic procedures. Not for resale without express authorization. Products are warranted to operate or perform substantially in conformance with published Product specifications in effect at the time of sale, as set forth in the Production documentation, specifications and/or accompanying package inserts ("Documentation"). No claim of suitability for use in applications regulated by FDA is made. The warranty provided herein is valid only when used by properly trained individuals. Unless otherwise stated in the Documentation, this warranty is limited to one year from date of shipment when the Product is subjected to normal, proper and intended usage. This warranty does not extend to anyone other than the Buyer. Any model or sample furnished to Buyer is merely illustrative of the general type and quality of goods and does not represent that any Product will conform to such model or sample. NO OTHER WARRANTIES, EXPRESS OR IMPLIED, ARE GRANTED INCLUDING WITHOUT LIMITATION, IMPLIED WARRANTIES OF MERCHANTABILITY, FITNESS FOR ANY PARTICULAR PURPOSE, OR NON-INFRINGEMENT. BUYER'S EXCLUSIVE REMEDY FOR NON-CONFORMING PRODUCTS DURING THE WARRANTY PERIOD IS LIMITED TO REPAIR, REPLACEMENT OF OR REFUND FOR THE NON-CONFORMING PRODUCT(S) AT SELLER'S SOLE OPTION. THERE IS NO OBLIGATION TO REPAIR, REPLACE OR REFUND FOR PRODUCTS AS THE RESULT OF (I) ACCIDENT, DISASTER OR EVENT OF FORCE MAJEURE, (II) MISUSE, FAULT OR NEGLIGENCE OF OR BY BUYER, (III) USE OF THE PRODUCTS IN A MANNER FOR WHICH THEY WERE NOT DESIGNED, OR (IV) IMPROPER STORAGE AND HANDLING OF THE PRODUCTS. Unless otherwise expressly stated on the Product or in the documentation accompanying the Product, the Product is intended for research only and is not to be used for any other purpose, including without limitation, unauthorized commercial uses, in vitro diagnostic uses, ex vivo or in vivo therapeutic uses, or any type of consumption by or application to human or animals.