

# TREM2 Polyclonal Antibody

## Product Details

Size	100 µg
Species Reactivity	Mouse
Host/Isotype	Sheep / IgG
Class	Polyclonal
Type	Antibody
Conjugate	Unconjugated
Immunogen	Mouse myeloma cell line NS0-derived recombinant mouse TREM-2b Leu19-Pro168
Form	Lyophilized
Concentration	0.2 mg/mL
Purification	Antigen affinity chromatography
Storage buffer	PBS with 5% trehalose
Contains	No Preservative
Storage conditions	-20° C, Avoid Freeze/Thaw Cycles
RRID	AB_2605803

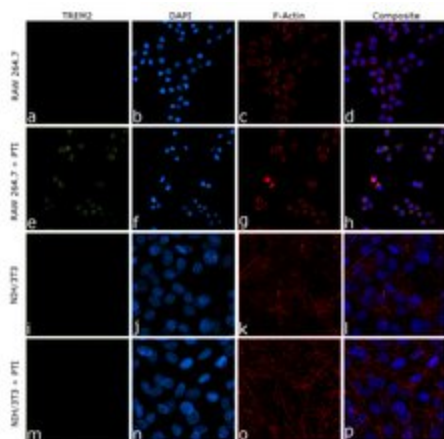
Applications	Tested Dilution	Publications
Western Blot (WB)	0.1 µg/mL	-
Immunocytochemistry (ICC/IF)	5-15 µg/mL	-

## Product Specific Information

In direct ELISAs, approximately 30% cross-reactivity with recombinant human TREM-2 is observed and less than 1% cross-reactivity with recombinant mouse (rm) TREM-1 and rmTREM-3 is observed.

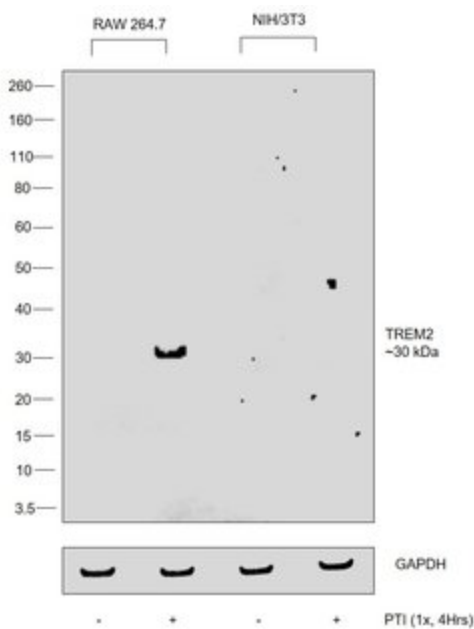
Reconstitute at 0.2 mg/mL in sterile PBS.

## Advanced Verification Data



### TREM2 Antibody (PA5-46978)

Antibody specificity was demonstrated by detection of differential basal expression of the target across cell models owing to their inherent genetic constitution. Immunofluorescence analysis using Anti-TREM2 Polyclonal Antibody (Product # PA5-46978), shows detection in only RAW 264.7 upon PTI treatments in comparison to NIH/3T3 with PTI treatment. Relative expression validation info.

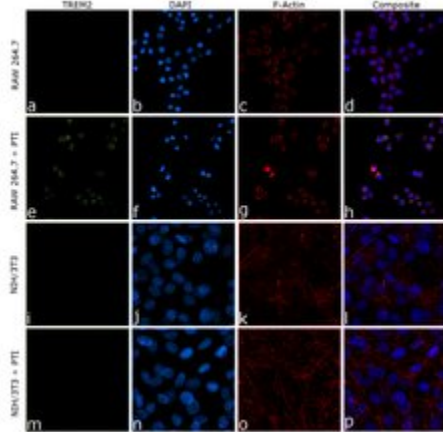


### TREM2 Antibody (PA5-46978)

Antibody specificity was demonstrated by detection of differential basal expression of the target across cell lines and condition media owing to their inherent genetic constitution. Relative expression of TREM2 was observed in RAW 264.7 Condition media in comparison to NIH/3T3 Condition media using Anti-TREM2 Polyclonal Antibody (Product # PA5-46978) in Western Blot. Relative expression validation info.

## Product Images For TREM2 Polyclonal Antibody

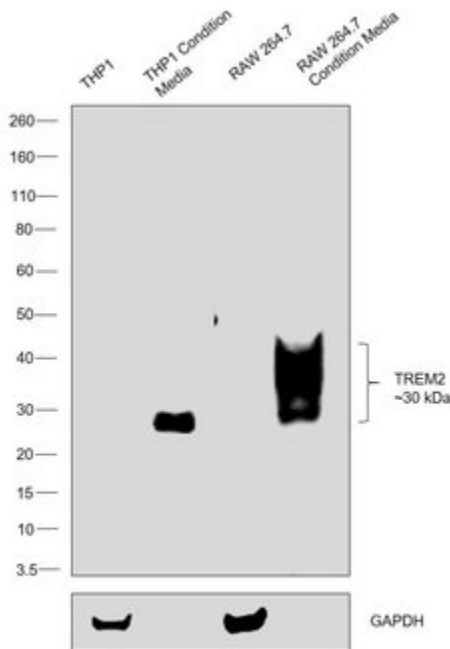
### TREM2 Antibody (PA5-46978) in ICC/IF



Immunofluorescence analysis of TREM2 was performed using 70% confluent log phase RAW 264.7 cells. The cells were fixed with 4% paraformaldehyde for 10 minutes, permeabilized with 0.1% Triton™ X-100 for 10 minutes, and blocked with 2% BSA for 10 minutes at room temperature. The cells were labeled with TREM2 Polyclonal Antibody (Product # PA5-46978) at 1:100 dilution in 0.1% BSA, incubated at 4 degree celsius overnight and then labeled with Donkey anti-Sheep IgG (H+L) Cross-Adsorbed Secondary Antibody, Alexa Fluor 488 (Product # A11015), (1:2000 dilution), for 45 minutes at room temperature (Panel a: Green). Nuclei (Panel b:Blue) were stained with ProLong™ Diamond Antifade Mountant with DAPI (Product # P36962). F-actin (Panel c: Red) was stained with Rhodamine Phalloidin (Product # R415, 1:300). Panel d represents the merged image showing Cytoplasmic and extracellular localization. Panel (a-d) shows representative RAW 264.7 control cell, whereas Panel (e-h) represent RAW 264.7 with PTI treatment. Similarly, panel (i-l) represent NIH/3T3 control cells and Panel (m-p) represent NIH/3T3 with PTI treatment. The images were captured at 60 magnification.

### TREM2 Antibody (PA5-46978) in WB

Western blot was performed using Anti-TREM2 Polyclonal Antibody (Product # PA5-46978) and a 30 kDa band corresponding to TREM2 was observed in the condition media of THP1 and Raw 264.7. Whole Cell Extract-WCL (30 µg lysate) of THP-1 (Lane 1), THP-1 Condition Media (Lane 2), RAW 264.7 (Lane 3), RAW 264.7 Condition Media (Lane 4) were electrophoresed using NuPAGE™ 4-12% Bis-Tris Protein Gel (Product # NP0321BOX). Resolved proteins were then transferred onto a Nitrocellulose membrane (Product # LC2001) by iBlot® 2 Dry Blotting System (Product # IB21001). The blot was probed with the primary antibody (1:2000 dilution) and detected by chemiluminescence with Rabbit anti-Sheep IgG (H+L) Secondary Antibody, HRP (Product # 61-8620,1:4000 dilution) using the iBright FL 1000 (Product # A32752). Chemiluminescent detection was performed using SuperSignal™ West Dura Extended Duration Substrate (Product # 34076).



View more figures on [thermofisher.com](http://thermofisher.com)

For Research Use Only. Not for use in diagnostic procedures. Not for resale without express authorization. Products are warranted to operate or perform substantially in conformance with published Product specifications in effect at the time of sale, as set forth in the Production documentation, specifications and/or accompanying package inserts ("Documentation"). No claim of suitability for use in applications regulated by FDA is made. The warranty provided herein is valid only when used by properly trained individuals. Unless otherwise stated in the Documentation, this warranty is limited to one year from date of shipment when the Product is subjected to normal, proper and intended usage. This warranty does not extend to anyone other than the Buyer. Any model or sample furnished to Buyer is merely illustrative of the general type and quality of goods and does not represent that any Product will conform to such model or sample. NO OTHER WARRANTIES, EXPRESS OR IMPLIED, ARE GRANTED INCLUDING WITHOUT LIMITATION, IMPLIED WARRANTIES OF MERCHANTABILITY, FITNESS FOR ANY PARTICULAR PURPOSE, OR NON INFRINGEMENT. BUYER'S EXCLUSIVE REMEDY FOR NON-CONFORMING PRODUCTS DURING THE WARRANTY PERIOD IS LIMITED TO REPAIR, REPLACEMENT OF OR REFUND FOR THE NON-CONFORMING PRODUCT(S) AT SELLER'S SOLE OPTION. THERE IS NO OBLIGATION TO REPAIR, REPLACE OR REFUND FOR PRODUCTS AS THE RESULT OF (I) ACCIDENT, DISASTER OR EVENT OF FORCE MAJEURE, (II) MISUSE, FAULT OR NEGLIGENCE OF OR BY BUYER, (III) USE OF THE PRODUCTS IN A MANNER FOR WHICH THEY WERE NOT DESIGNED, OR (IV) IMPROPER STORAGE AND HANDLING OF THE PRODUCTS. Unless otherwise expressly stated on the Product or in the documentation accompanying the Product, the Product is intended for research only and is not to be used for any other purpose, including without limitation, unauthorized commercial uses, in vitro diagnostic uses, ex vivo or in vivo therapeutic uses, or any type of consumption by or application to human or animals.